

Medeco Removable Core

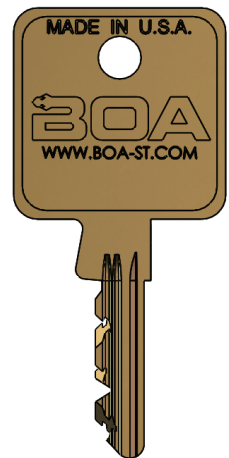
Medeco® Locks are also available with a removable core feature. This feature allows cores to be changed out in seconds, to provide an entirely new keying combination. For applications that may require instantaneous re-keying due to lost or stolen keys, or where periodic re-keying is done as a matter of good business practice, Medeco® Removable Core Cylinders save valuable time and money. Removable Core Locks offer the same high security features of a Medeco® Traditional Fixed Core Lock with the convenience of a removable core.

Features:

- Removable Core locks offer the security and convenience of removable core in the smaller footprint of a standard ¾" diameter cam lock.
- 1000's of high-security precision cut key combinations.
- Biaxial locks feature pick resistant offset chisel-pointed pins.
- Available restricted keyways and high level of key control. Additional keys will only be released with an authorized signature.

Mechanical Specifications:

- Special "control" key removes the cam lock plug for fast and secure combination change / rekey
- Operating key operates the lock without removing the core
- Machined brass plug with hardened inserts
- Machined brass outer shell
- Keyed alike or keyed different
- Master keyed with other style products
- Key retaining or multiple key pulls
- Clockwise or counterclockwise rotation
- Special finishes available. Call for details, lead time and pricing.



Part Number

K - CL-3 - **R** - **P** - **KO**
M - **F** - **C**

KEYWAY **K**

- 03** – Medeco® m³
- 04** – Medeco® CA
- 07** – BOA Restricted

ROTATION **R**

- 90** – 90° Right
- 180** – 180° Right
(Call for info on Left-hand rotation)

KEY PULLS **P**

- C** – Captive Key Retaining
(90° Rotation Only)
- N** – Non-Captive 2 Key Pulls
(180° Rotation Only)

KEYED OPTION **KO**

- A** – Keyed Alike
- D** – Keyed Different

MASTER **M**

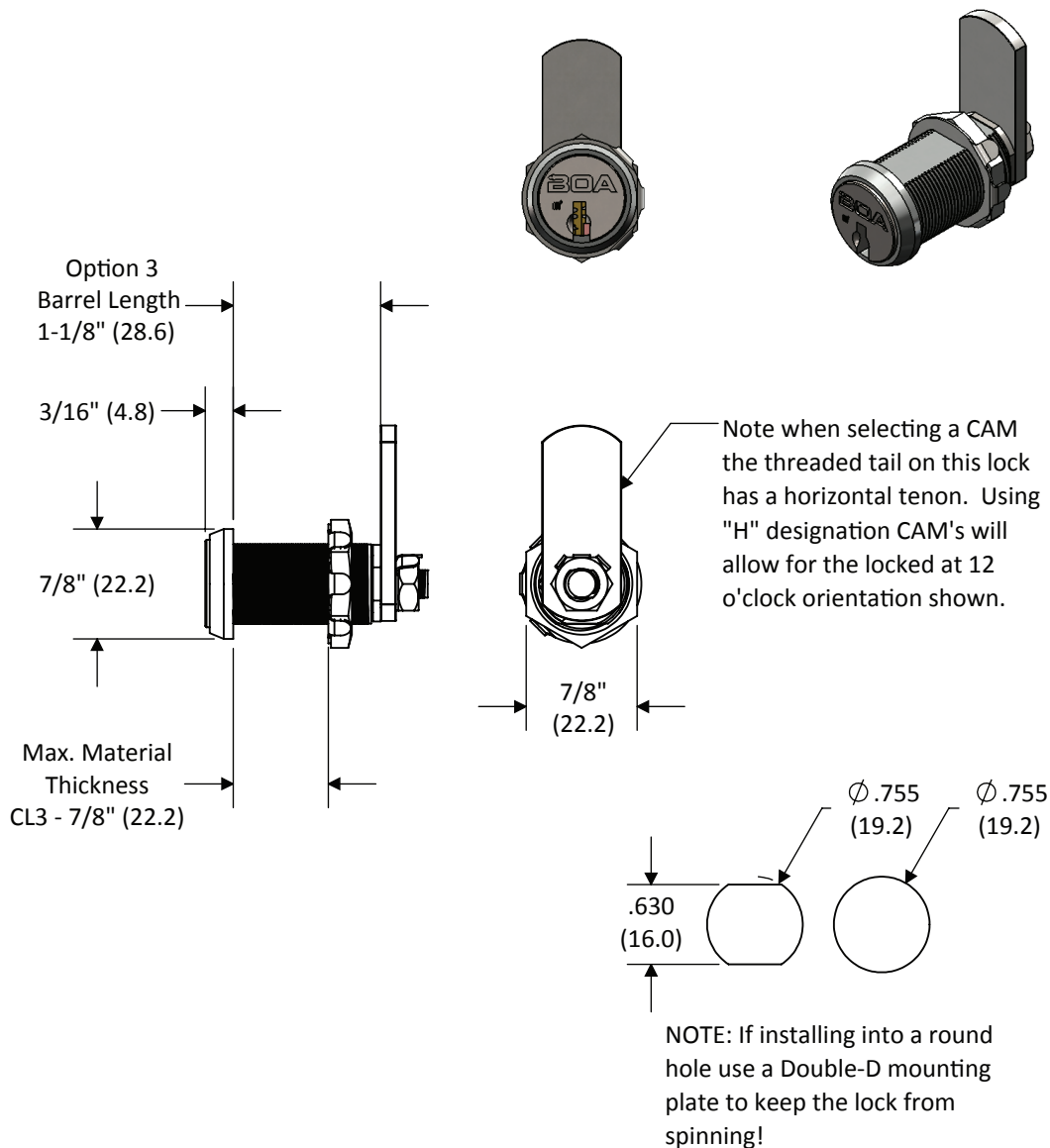
- N** – Non-Master
- M** – Single Level Master

FINISH **F**

- PN** - Polished Nickel
- SC** - Satin Chrome (US26D)
- CF** - Custom Finish (See Finish Page)

CAM **C**

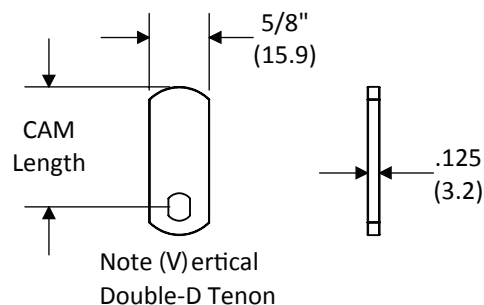
See CAM Page for options



Package includes parts for 90° and 180° rotation.

All dimensions are nominal. For best fit call for a sample.
Dual-Dimensions in parentheses are in millimeter (mm).

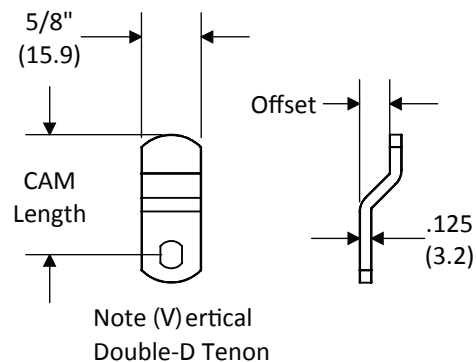
| Straight Flat CAM | |
|-------------------|------------------|
| Part # | CAM Length |
| 00-CAM-0750 | 0.750" (19.1 mm) |
| 00-CAM-1250 | 1.250" (31.8 mm) |
| 00-CAM-1750 | 1.750" (44.5mm) |
| 00-CAM-2000 | 2.000" (50.8 mm) |



Note (H)orizontal
Double-D Tenon

| Offset CAM | | |
|------------------|------------------|------------------|
| Part # | CAM Length | Offset |
| 00-CAM-1250X0313 | 1.250" (31.8 mm) | 0.3125" (7.9 mm) |
| 00-CAM-2000X0313 | 2.000" (50.8 mm) | 0.3125" (7.9 mm) |

Note: All CAMs are sold as a set or 2 CAMs containing both Vertical and Horizontal Tenons.



Note (H)orizontal
Double-D Tenon

**Custom sizes available.
Call for quote and details.**

All dimensions are nominal. For best fit call for a sample.
Dual-Dimensions in parentheses are in millimeter (mm).

Medeco Removable Core Dead Bolt Drawer Lock

Part Number

K -DB-L- **B** - **P** - **KO**
M - **F**

KEYWAY **K**

- 03** – Medeco® m³
- 04** – Medeco® CA
- 07** – BOA Restricted

BOLT TYPE **B**

- BS** – 1-1/16" (27.0 mm)
- BL** – 1-11/16" (42.9 mm)
- BLX** – 3-1/8" (79.4 mm)
- OS** – 3/8" (9.5 mm) Offset Bolt

KEY PULLS **P**

- C** – Captive Key Retaining (90° Rotation Only)
- N** – Non-Captive 2 Key Pulls (180° Rotation Only)

KEYED OPTION **KO**

- A** – Keyed Alike
- D** – Keyed Different

MASTER **M**

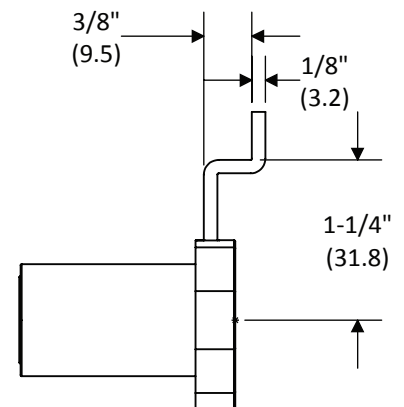
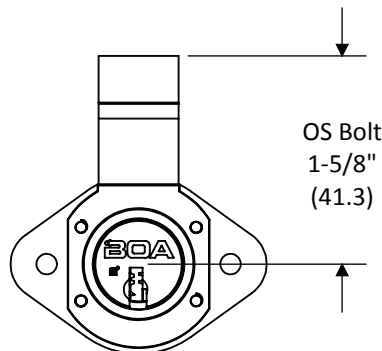
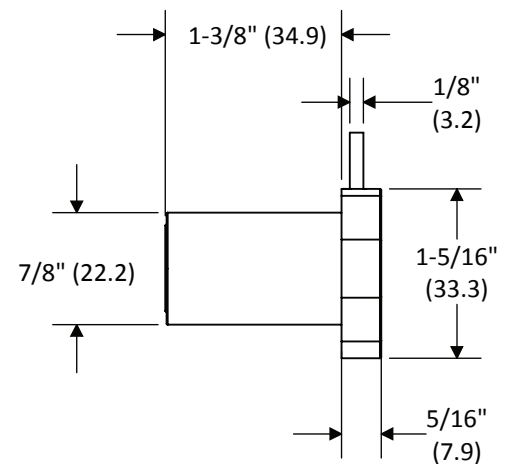
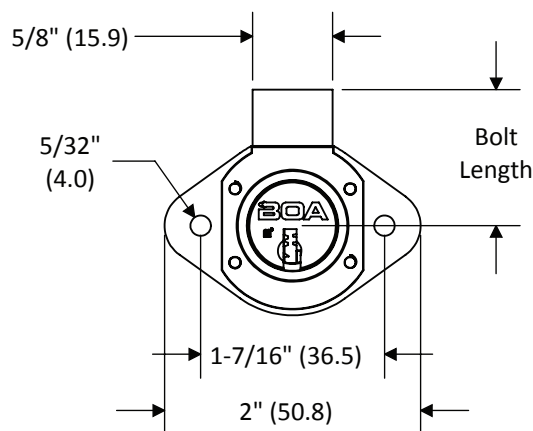
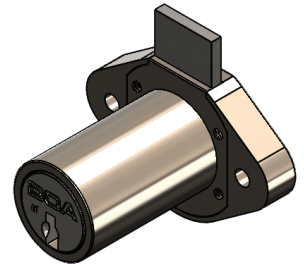
- N** – Non-Master
- M** – Single Level Master

FINISH **F**

- PN** - Polished Nickel
- SC** - Satin Chrome (US26D)
- CF** - Custom Finish (See Finish Page)

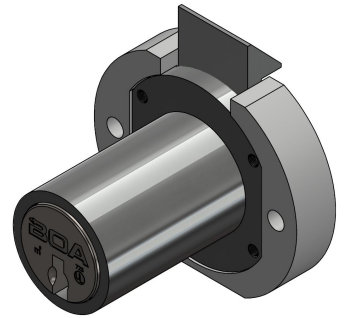
NOTE:

Products pictured in the locked position
Nominal Bolt travel is 7/16" (11.1 mm)
Short bolt (BS) option retracts completely into housing.



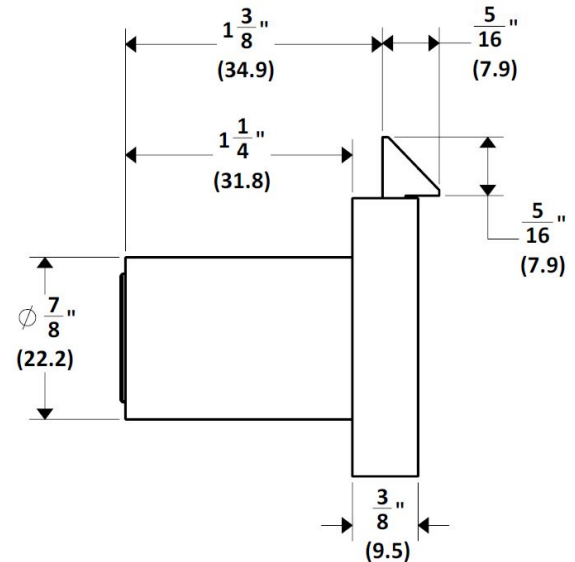
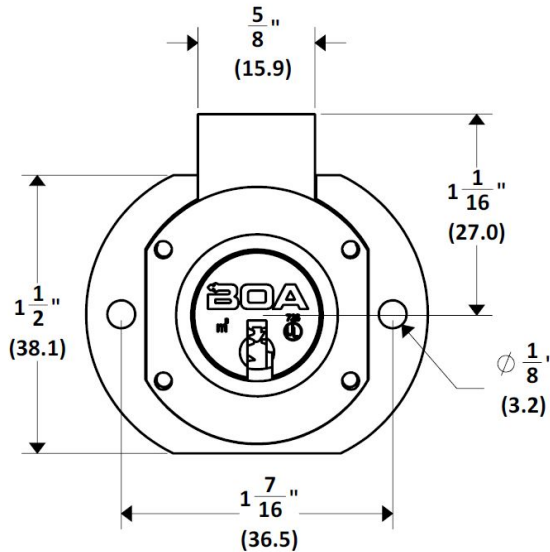
All dimensions are nominal. For best fit call for a sample.
Dual-Dimensions in parentheses are in millimeter (mm).

Medeco Removable Core Spring Bolt Drawer Lock



NOTE:

Products pictured in the locked position
Nominal Bolt travel is 11/32" (8.7 mm)



Part Number

K - L - **B** - C - **KO** -
M - **F**

KEYWAY **K**

- 03** – Medeco® m³
- 04** – Medeco® CA
- 07** – BOA Restricted

BOLT TYPE **B**

- BS** – 1-1/16" (27.0mm)

KEYED OPTION **KO**

- A** – Keyed Alike
- D** – Keyed Different

MASTER **M**

- N** – Non-Master
- M** – Single Level Master

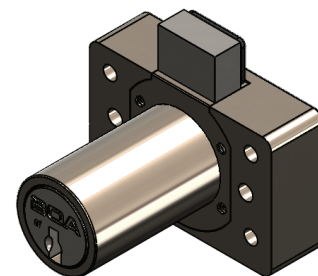
FINISH **F**

- PN** – Polished Nickel
- SC** – Satin Chrome (US26D)
- CF** – Custom Finish (See Finish Page)

All dimensions are nominal. For best fit call for a sample.
Dual-Dimensions in parentheses are in millimeter (mm).

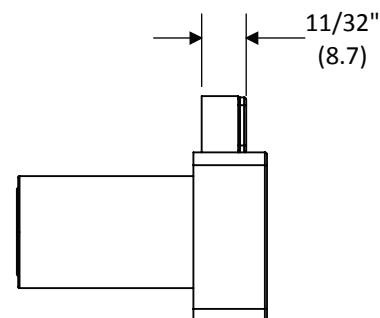
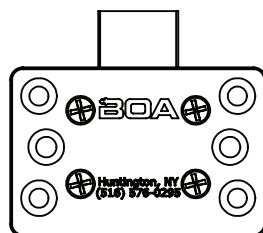
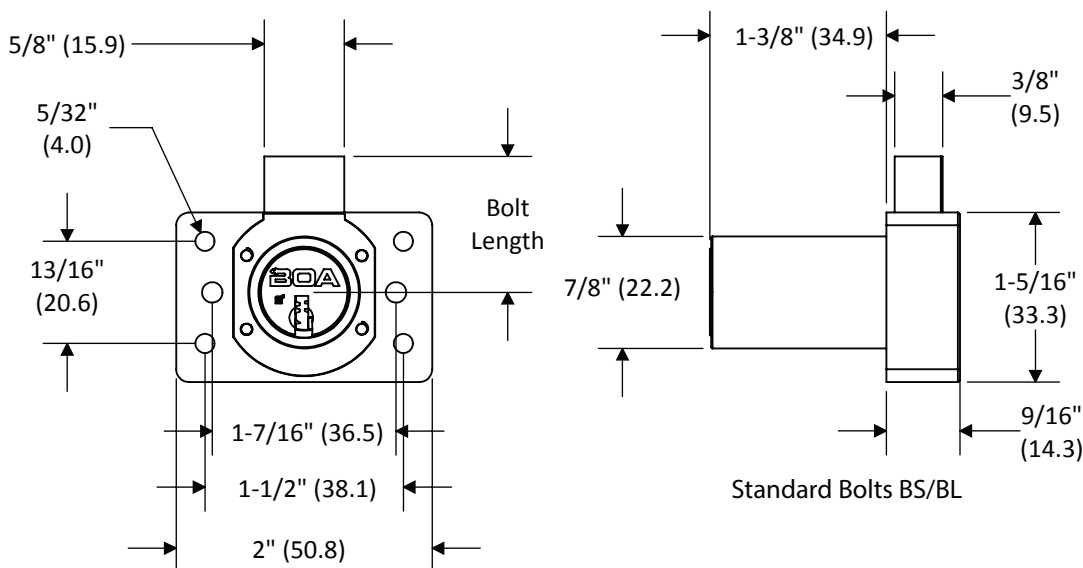
Medeco Removable Core Dead Bolt "BULLDOG" Drawer Lock*

*Patent Pending



NOTE:

Products pictured in the locked position
Nominal Bolt travel is 7/16" (11.1 mm)
Short bolt (BS & BSB) options retract
completely into housing.



Rubber Bumper Bolts BSB/BLB

All dimensions are nominal. For best fit call for a sample.
Dual-Dimensions in parentheses are in millimeter (mm).

Medeco Removable Core Snap Bolt Drawer Lock

Part Number

K -SB-L- **O** -N- **KO** -
M - **F**

KEYWAY **K**

- 03** – Medeco® m³
- 04** – Medeco® CA
- 07** – BOA Restricted

ORIENTATION **O**

- VI** – Vertical or Inverted
- LR** – Left or Right

KEYED OPTION **KO**

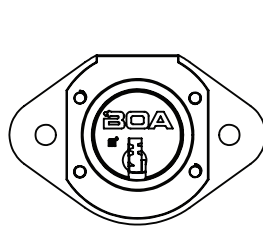
- A** – Keyed Alike
- D** – Keyed Different

MASTER **M**

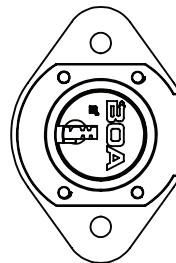
- N** – Non-Master
- M** – Single Level Master

FINISH **F**

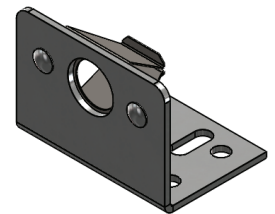
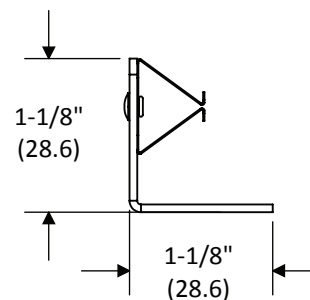
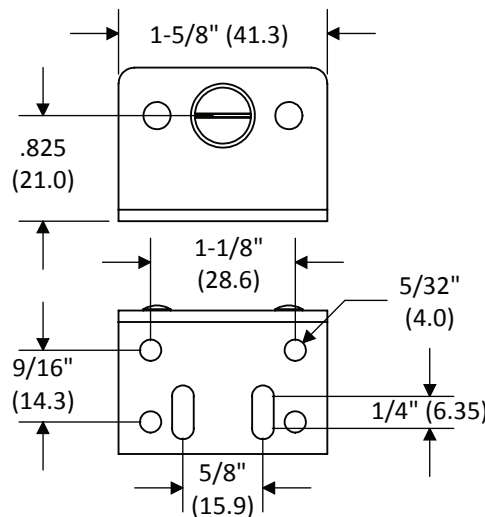
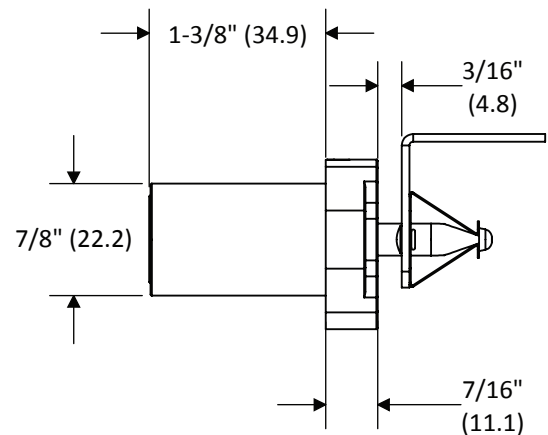
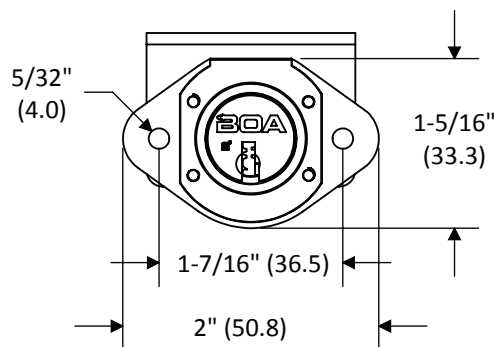
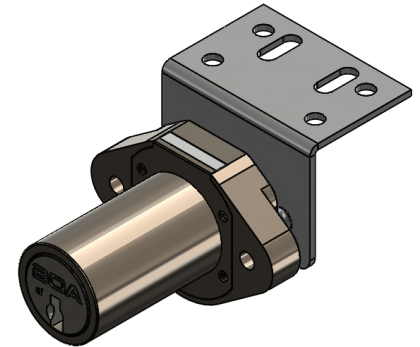
- PN** – Polished Nickel
- SC** – Satin Chrome (US26D)
- CF** – Custom Finish (See Finish Page)



"VI" Orientation



"LR" Orientation



All dimensions are nominal. For best fit call for a sample.
Dual-Dimensions in parentheses are in millimeter (mm).

Medeco Removable Core Keys & Cores

Part Number

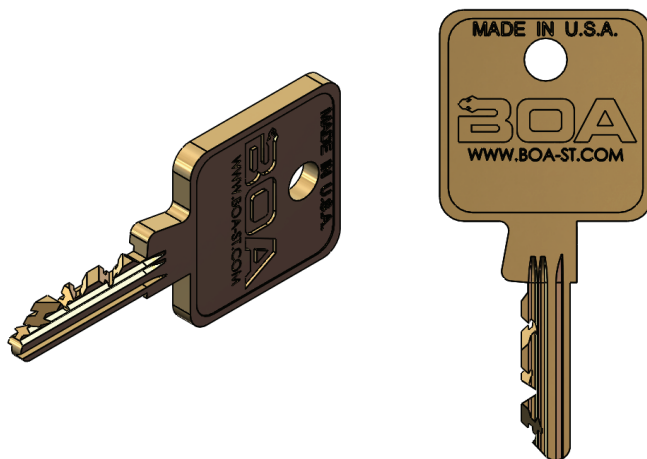
K -KEY- **FN**

KEYWAY **K**

- 03** – Medeco® m³
- 04** – Medeco® CA
- 07** – BOA Restricted

FUNCTION **FN**

- OP** – Operating
- CTL** – Control
- M** – Single Level Master



BOA Security Technologies offers Medeco® Biaxial and Medeco3® key technology. Restricted keyways are available which offer another layer of protection.

All Medeco® keys purchased through BOA must be registered with an authorized identification and signature on file. Additional keys can only be purchased with this authorization credential.

Note removable core operating keys are 5-pin and the control key is 4-pin. Removable core products can not be mixed with standard Medeco products.

K -CORE- **KO** - **M** - **F**

KEYWAY **K**

- 03** – Medeco® m³
- 04** – Medeco® CA
- 07** – BOA Restricted

KEYED OPTION **KO**

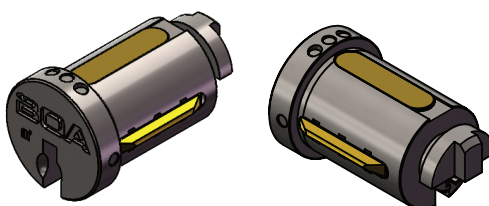
- A** – Keyed Alike
- D** – Keyed Different

MASTER **M**

- N** – Non-Master
- M** – Single Level Master

FINISH **F**

- BC** – Brushed Chrome (Standard)
- CF** – Custom Finish (See Finish Page)



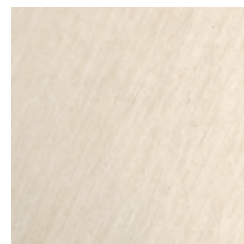
Finishes



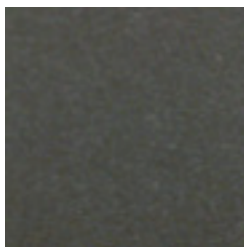
PN - Polished Nickel



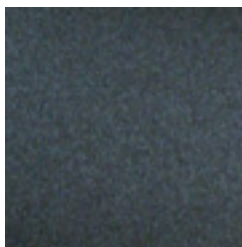
PC - Polished Chrome



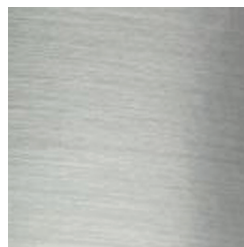
SC - Satin Chrome (US26D)



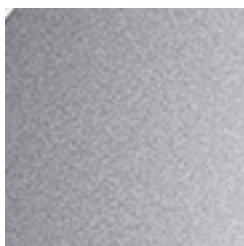
GM - Gunmetal



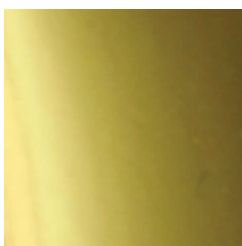
BL - Black



BC - Brushed Chrome



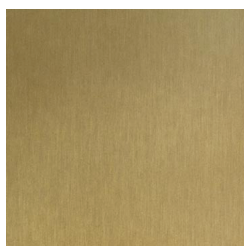
SBC - Sandblasted Chrome



PB - Polished Brass



SB - Satin Brass



SB - Statuary Bronze



CF - Custom Finish