

Nexgen XT is a pure electronic master key system providing Controlled Access, Accountability, Physical Security and effective System Management. Nexgen XT offers the benefits of electronic access control in a key operated lock. Keys are programmed to operate designated locks during a set schedule. Nexgen XT locks and keys record every access and attempted access for full visibility to who, where, and when.

Features:

- **Controlled Access**

Keys are electronically programmed to open only specific locks during a designated schedule. Schedules may also contain an expiration point to completely disable the key until it is audited and reprogrammed.

- **Accountability**

Audit information recorded in both the lock and key shows a time-and-date-stamped record of every event, including authorized accesses and unauthorized attempts.

- **Electronic Rekeying & Scheduling**

Respond quickly to security threats, lost or stolen keys, or personnel changes without the added cost of changing your locks and keys.

- **Easy Installation**

Nexgen XT keys provide all power to the cylinder, eliminating the need for any hard wiring or power supply. Simply remove the existing mechanical cylinder and install the Nexgen XT lock.

- **Physical Security**

Nexgen XT products add a wide variety of intelligent features without compromising on physical security. Attack-resistant design and tamper-proof features provide strong protection against forced entry.

- **Efficient System Management**

Nexgen XT software contains tools that will help you manage your security more efficiently. Flexible programming, scheduled access and full audit reports are offered with the convenience of stand-alone or web-based software.

- **Added Value**

More than just a way to protect your property, equipment and assets, Nexgen XT is also a business tool that can lead to a substantial return on investment.

- **Multiple Finishes Available**

A variety of finishes from polished nickel to gloss black are available. Call for details, lead time, and pricing.

Mechanical Specifications:

- Stainless steel shell and front disc
- Gold plated data contacts
- Key retaining (single key pull)
- Drill and tamper resistant
- Indoor and outdoor use

Electronic Specifications:

- Lock holds up to 2000 audit events
- No hard wiring required, all power provided by key
- Encrypted data communication
- All access programming performed through the key
- Lock can hold black-list of unauthorized keys

Nexgen XT Cam Lock

Part Number

05-CL- **BL** - **R** -C- **F** - **C**

BARREL LENGTH **BL**

2 – 7/8" (22.2mm)

3 – 1-1/8" (28.6mm)

ROTATION **R**

90 – 90° Right

180 – 180° Right

(Call for info on Left-hand rotation)

FINISH **F**

SS – Satin Stainless (Standard)

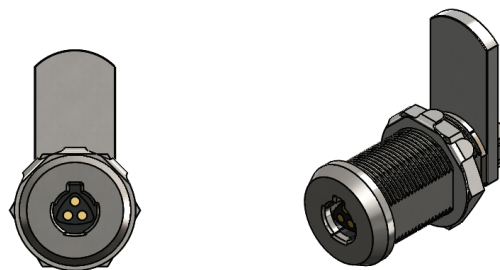
PN – Polished Nickel

SC – Satin Chrome (US26D)

CF – Custom Finish (See Finish Page)

CAM **C**

See CAM Page for options

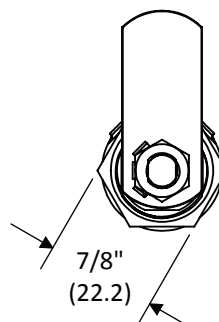


Option 2
Barrel Length
7/8" (22.2)

7/16" (11.1)

7/8" (22.2)

Max. Material
Thickness
9/16" (14.3)



7/8"
(22.2)

Ø .755
(19.2)

Ø .755
(19.2)

.630
(16.0)

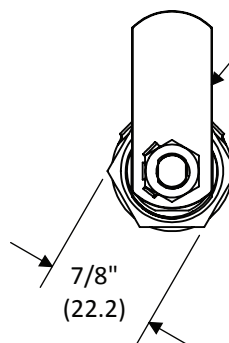
NOTE: If installing into a round hole use a Double-D mounting plate to keep the lock from spinning!

Option 3
Barrel Length
1-1/8" (28.6)

3/16" (4.8)

7/8" (22.2)

Max. Material
Thickness
13/16" (20.6)



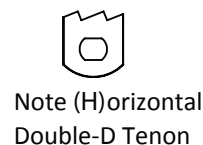
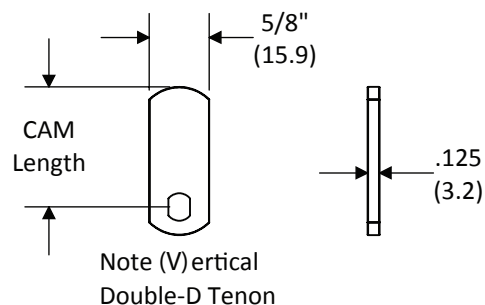
7/8"
(22.2)

Note when selecting a CAM the threaded tail on this lock has a vertical tenon. Using "V" designation CAM's will allow for the locked at 12 o'clock orientation shown.

Package includes parts for 90° and 180° rotation.

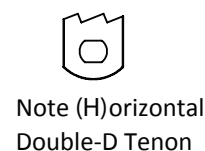
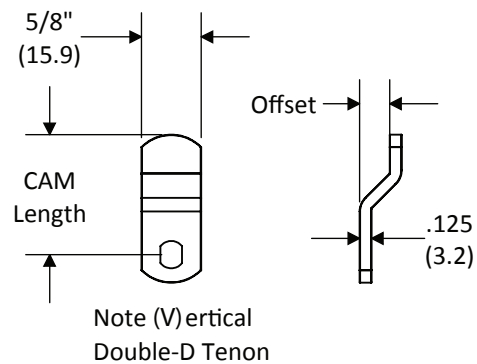
All dimensions are nominal. For best fit call for a sample.
Dual-Dimensions in parentheses are in millimeter (mm).

Straight Flat CAM	
Part #	CAM Length
00-CAM-0750	0.750" (19.1 mm)
00-CAM-1250	1.250" (31.8 mm)
00-CAM-1750	1.750" (44.5mm)
00-CAM-2000	2.000" (50.8 mm)



Offset CAM		
Part #	CAM Length	Offset
00-CAM-1250X0313	1.250" (31.8 mm)	0.3125" (7.9 mm)
00-CAM-2000X0313	2.000" (50.8 mm)	0.3125" (7.9 mm)

Note: All CAMs are sold as a set or 2 CAMs containing both Vertical and Horizontal Tenons.



**Custom sizes available.
Call for quote and details.**

All dimensions are nominal. For best fit call for a sample.
Dual-Dimensions in parentheses are in millimeter (mm).

Nexgen XT Dead Bolt Drawer Lock

Part Number

05-DB-L-**B**-C-**F**

BOLT TYPE **B**

BS – 1-1/16" (27.0 mm)

BL – 1-11/16" (42.9 mm)

BXL – 3-1/8" (79.4 mm)

OS – 3/8" (9.5 mm) Offset Bolt

FINISH **F**

PN – Polished Nickel (with Satin Stainless Core)

SC – Satin Chrome (US26D)

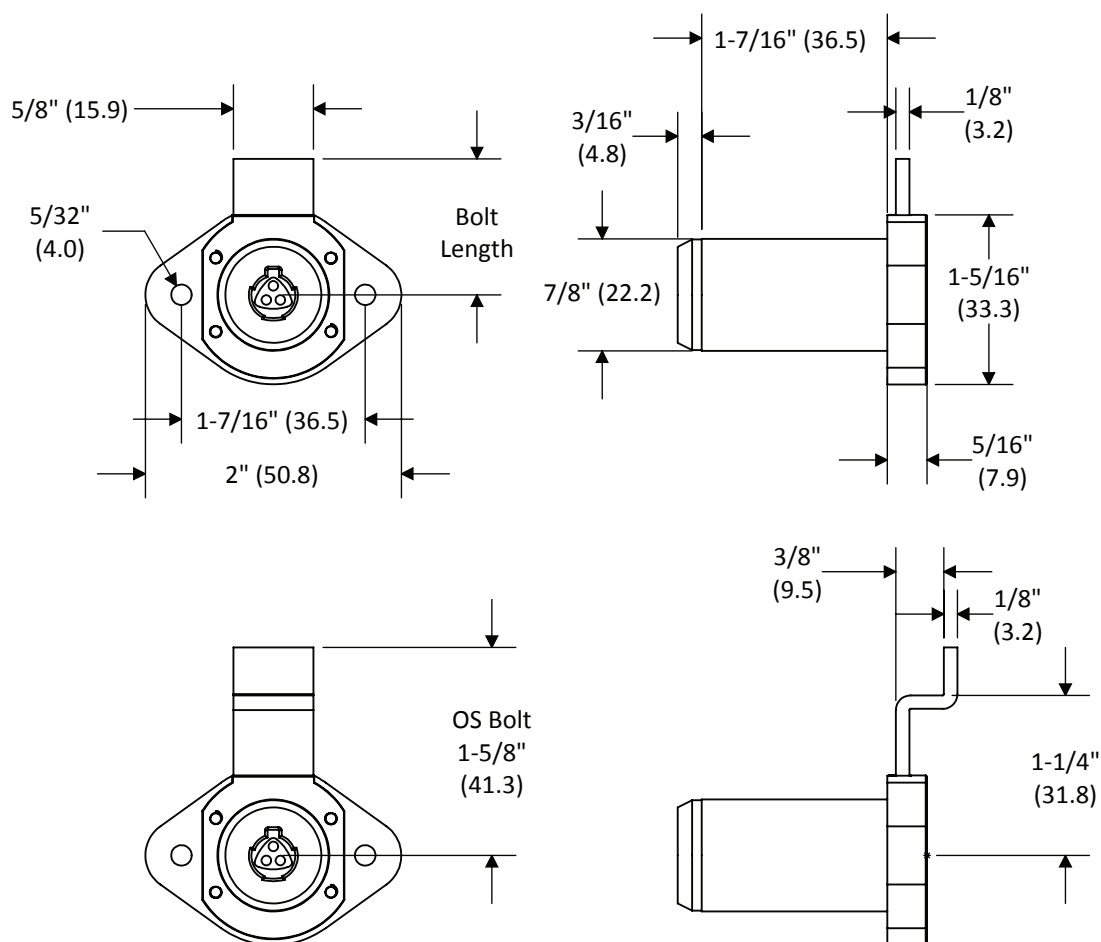
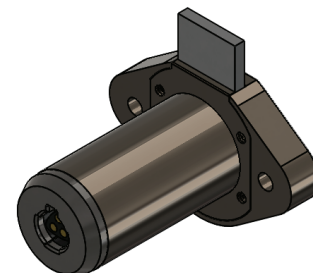
CF – Custom Finish (See Finish Page)

NOTE:

Products pictured in the locked position

Nominal Bolt travel is 7/16" (11.1 mm)

Short bolt (BS) option retracts completely into housing.



All dimensions are nominal. For best fit call for a sample.
Dual-Dimensions in parentheses are in millimeter (mm).

Nexgen XT Dead Bolt "BULLDOG" Drawer Lock*

*Patent Pending

Part Number

05-BD-L-**B**-C-**F**

BOLT TYPE **B**

BS – 1-1/16" (27.0 mm)

BL – 1-11/16" (42.9 mm)

BSB – 1-1/16" (27.0 mm)
with Rubber Bumper

BLB – 1-11/16" (42.9 mm)
with Rubber Bumper

FINISH **F**

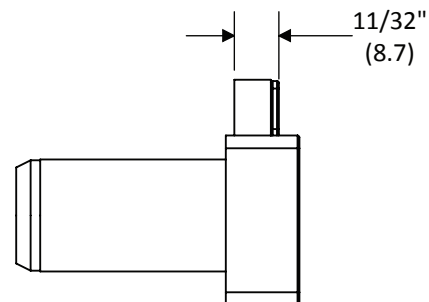
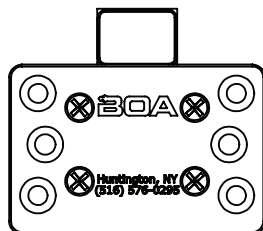
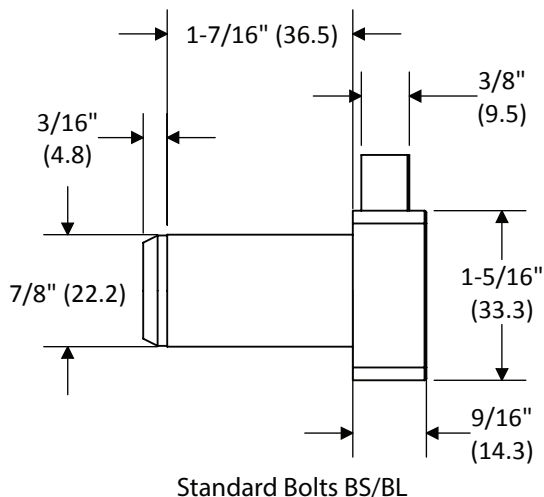
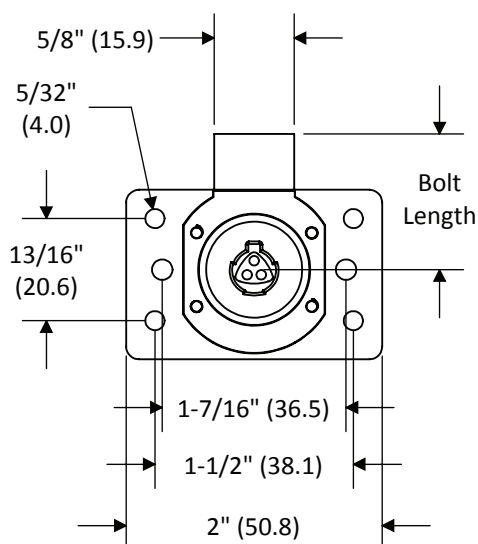
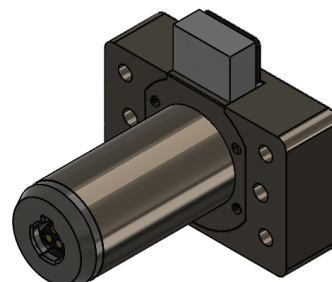
PN – Polished Nickel (with Satin
Stainless Core)

SC – Satin Chrome (US26D)

CF – Custom Finish (See Finish
Page)

NOTE:

Products pictured in the locked position
Nominal Bolt travel is 7/16" (11.1 mm)
Short bolt (BS & BSB) options retract
completely into housing.



Rubber Bumper Bolts BSB/BLB

All dimensions are nominal. For best fit call for a sample.
Dual-Dimensions in parentheses are in millimeter (mm).

Part Number

05-SB-L-**O**-N-**F**

ORIENTATION **O**

VI - Vertical or Inverted

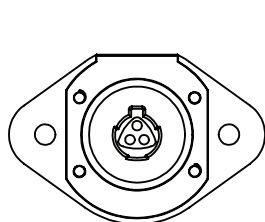
LR - Left or Right

FINISH **F**

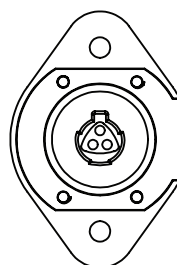
PN - Polished Nickel (with Satin Stainless Core)

SC - Satin Chrome (US26D)

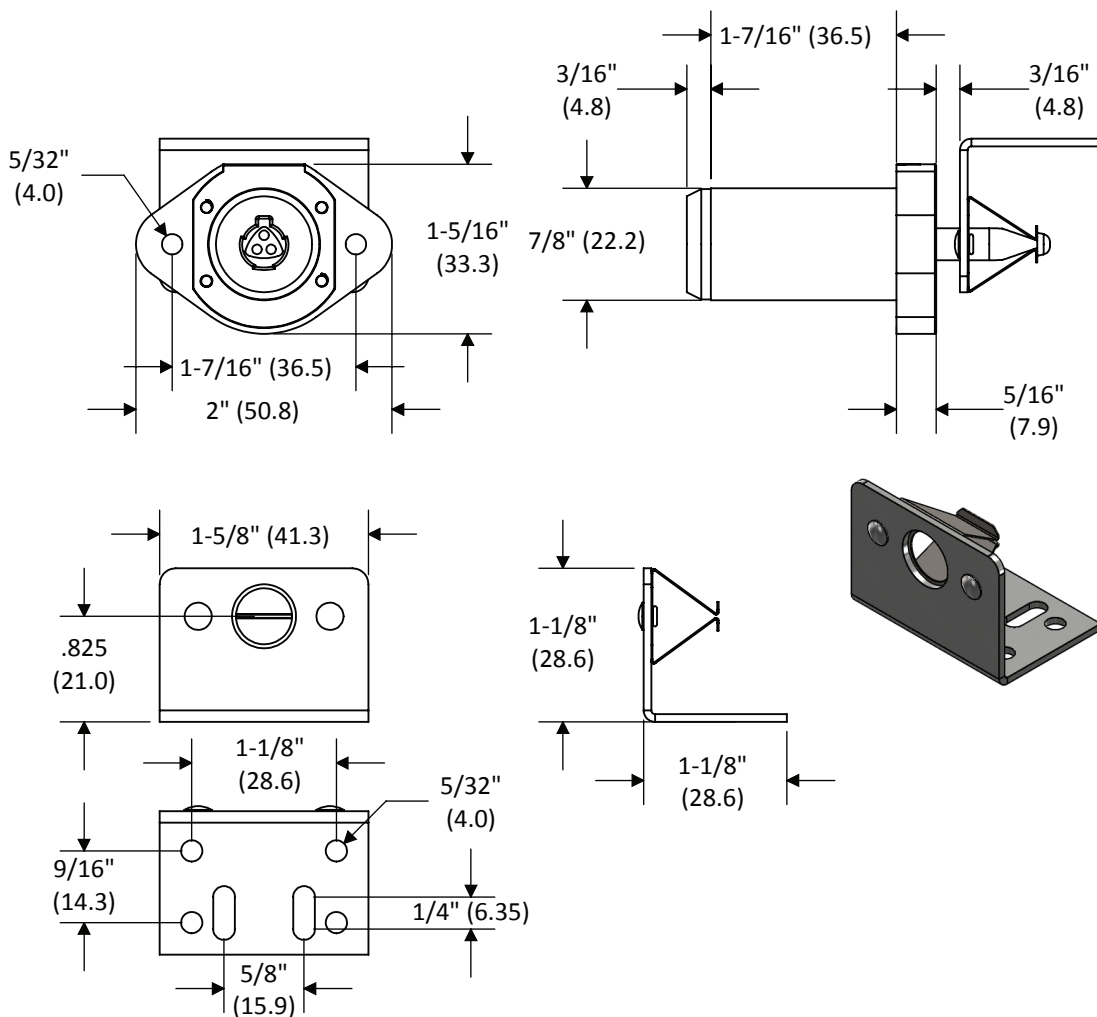
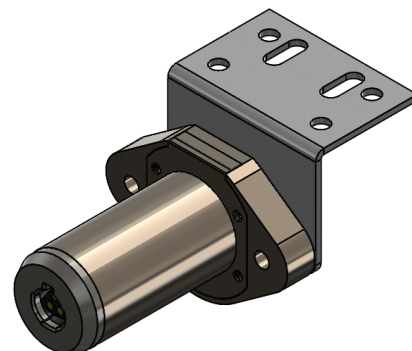
CF - Custom Finish (See Finish Page)



"VI" Orientation



"LR" Orientation

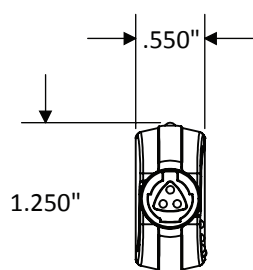


All dimensions are nominal. For best fit call for a sample.
Dual-Dimensions in parentheses are in millimeter (mm).

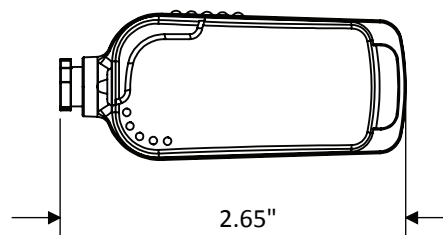
Part Number

SLIMLINE

05-KEY-OP-SLIM – Operating



Weight: 1.25 oz



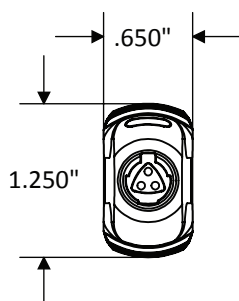
STANDARD

05-KEY-OP – Operating

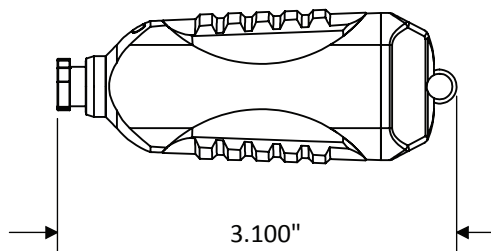
05-KEY-CTL – Control

05-KEY-AUDIT – Audit

05-KEY-BLIST – Blacklist



Weight: 2.38 oz



All dimensions are nominal. For best fit call for a sample.
Dual-Dimensions in parentheses are in millimeter (mm).

Nexgen XT Accesories

Part #	Description
05-CHG	Portable Key Charging Adapter only (order cable separately).
05-CHG-SET	Portable Key Charging Adapter (includes 05-USB cable 05-TRN).
05-DOCK-SET	USB System Dongle (includes 05-USB cable).
05-MOBILE-DOCK	Mobile Programmer allows XT Industrial and Slim Line keys to be programmed remotely via Bluetooth (on an Android device) or via a USB tether to a laptop.
05-REMOTE-DOCK	Remote Wall Programmer - Program and update Nexgen XT Keys remotely via an internet connection to the Medeco XT Web Manager.
05-MCHG	Multi Key Charger - Charge up to 10 Nexgen XT keys simultaneously (does not program keys). Includes transformer.
05-TRN	Wall Power Adapter for use with 05-CHG.
05-TRN-V	Vehicle Power Adapter for use with 05-CHG.
05-USB	USB Cable.
05-SOFTWARE-WH	Nexgen XT Web Hosted Software (call for details).
05-SYS-DONGLE-SA	USB Nexgen XT System Dongle (for stand alone systems only).
05-SOFTWARE-SA	Nexgen XT Stand Alone Software (call for details).



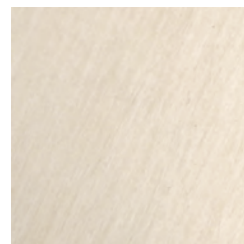
Finishes



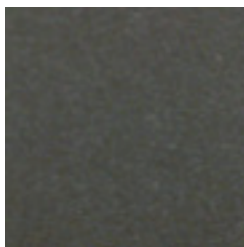
PN - Polished Nickel



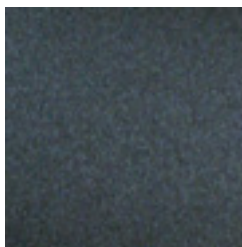
PC - Polished Chrome



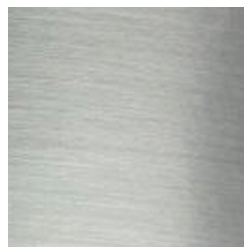
SC - Satin Chrome (US26D)



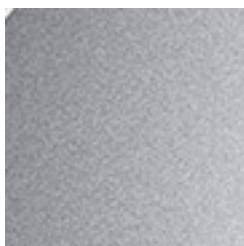
GM - Gunmetal



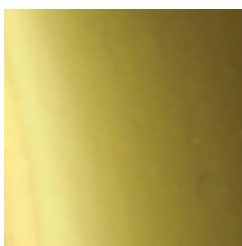
BL - Black



BC - Brushed Chrome



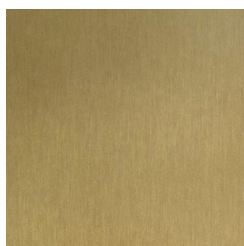
SBC - Sandblasted Chrome



PB - Polished Brass



SB - Satin Brass



SB - Statuary Bronze



CF - Custom Finish