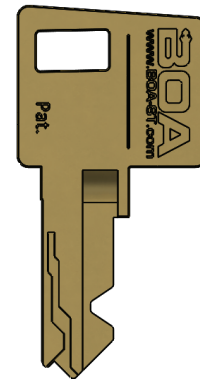
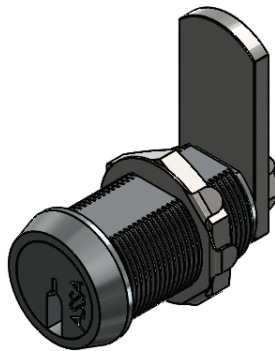


ASSA Desmo locks by BOA Security Technologies are available in a wide variety of standard sizes and functions, along with custom products to meet your specific needs. Locks can be keyed different, keyed alike, or master keyed.

Features:

- Patent protected extra heavy duty keys
- Restricted keys can only be cut at factory authorized locations.
- Precision Drive Pin system which is patent protected and mechanically operated without springs by the side cuts on the key. Spring-free construction maximizes pick resistance and physical security.
- 8 Locking pin dual side bar design provides 2x as much resistance against attempts to forcibly torque the lock open.
- Available restricted keyways and high level of key control. Additional keys will only be released with an authorized signature.



Part Number

11-CL- **BL** - **R** - **P** -

KO - **M** - **F** - **C**

BARREL LENGTH **BL**

- 1** – 5/8" (15.9mm)
- 2** – 7/8" (22.2mm)
- 3** – 1-1/8" (28.6mm)

ROTATION **R**

- 90** – 90° Right
- 180** – 180° Right
(Call for info on Left-hand rotation)

KEY PULLS **P**

- C** – Captive Key Retaining
(90° Rotation Only)
- N** – Non-Captive 2 Key Pulls
(180° Rotation Only)

KEYED OPTION **KO**

- A** – Keyed Alike
- D** – Keyed Different

MASTER **M**

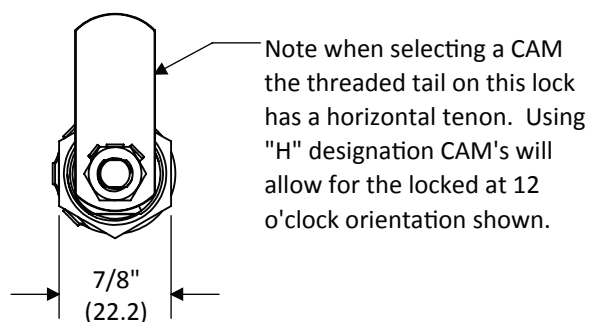
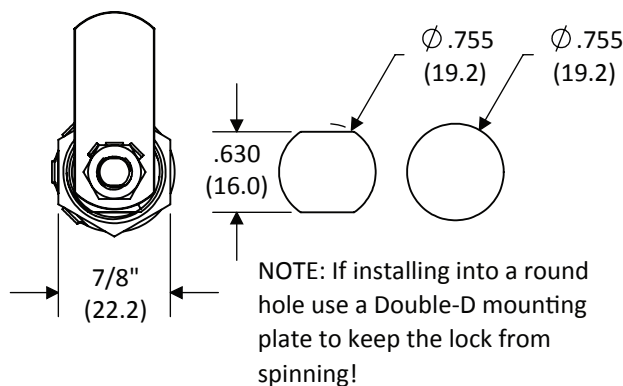
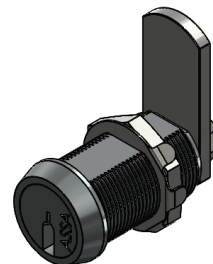
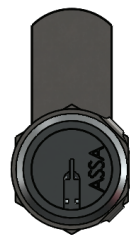
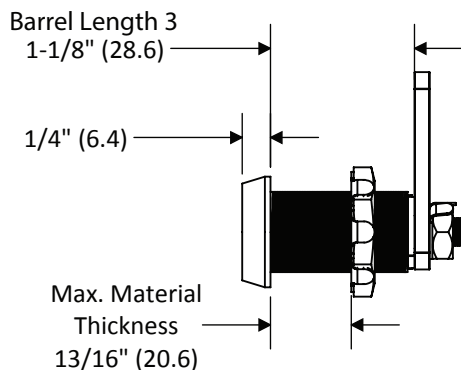
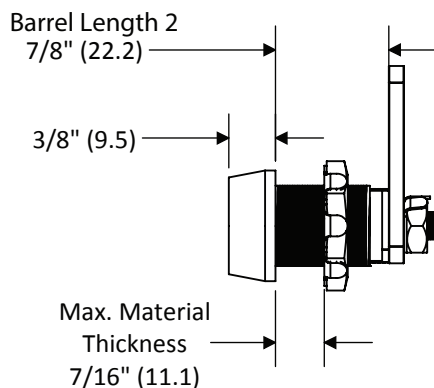
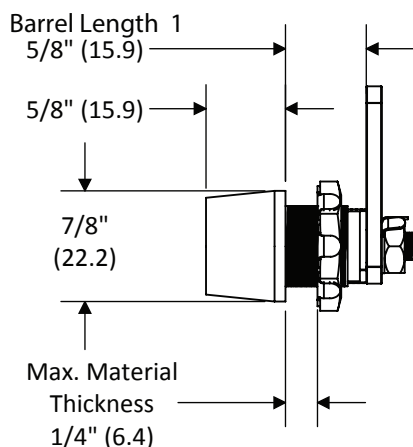
- N** – Non-Master
- M** – Single Level Master

FINISH **F**

- PC** – Polished Chrome (Standard)
- SC** – Satin Chrome (US26D)
- CF** – Custom Finish (See Finish Page)

CAM **C**

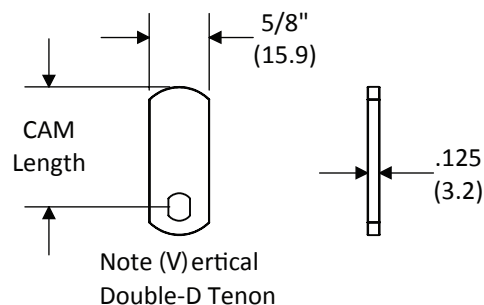
See CAM Page for options



Package includes parts for 90° and 180° rotation.

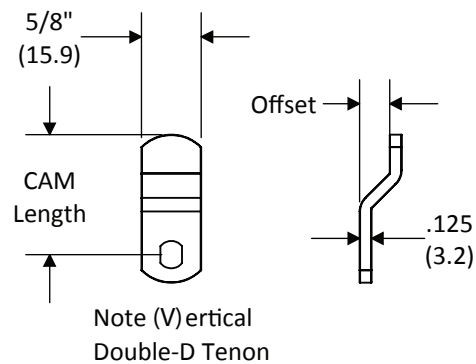
All dimensions are nominal. For best fit call for a sample.
Dual-Dimensions in parentheses are in millimeter (mm).

Straight Flat CAM	
Part #	CAM Length
00-CAM-0750	0.750" (19.1 mm)
00-CAM-1250	1.250" (31.8 mm)
00-CAM-1750	1.750" (44.5mm)
00-CAM-2000	2.000" (50.8 mm)



Offset CAM		
Part #	CAM Length	Offset
00-CAM-1250X0313	1.250" (31.8 mm)	0.3125" (7.9 mm)
00-CAM-2000X0313	2.000" (50.8 mm)	0.3125" (7.9 mm)

Note: All CAMs are sold as a set or 2 CAMs containing both Vertical and Horizontal Tenons.



**Custom sizes available.
Call for quote and details.**

All dimensions are nominal. For best fit call for a sample.
Dual-Dimensions in parentheses are in millimeter (mm).

ASSA Dead Bolt Drawer Lock

Part Number

11-DB- **BL** - **B** - **P** -

KO - **M** - **F**

BARREL LENGTH **BL**

S – 1" (25.4mm)

L – 1-7/16" (36.5mm)

BOLT TYPE **B**

BS – 1-1/16" (27.0 mm)

BL – 1-11/16" (42.9 mm)

BXL – 3-1/8" (79.4 mm)

OS – 3/8" (9.5 mm) Offset Bolt

KEY PULLS **P**

C – Captive Key Retaining
(90° Rotation Only)

N – Non-Captive 2 Key Pulls
(180° Rotation Only)

KEYED OPTION **KO**

A – Keyed Alike

D – Keyed Different

MASTER **M**

N – Non-Master

M – Single Level Master

FINISH **F**

PN - Polished Nickel

SC - Satin Chrome (US26D)

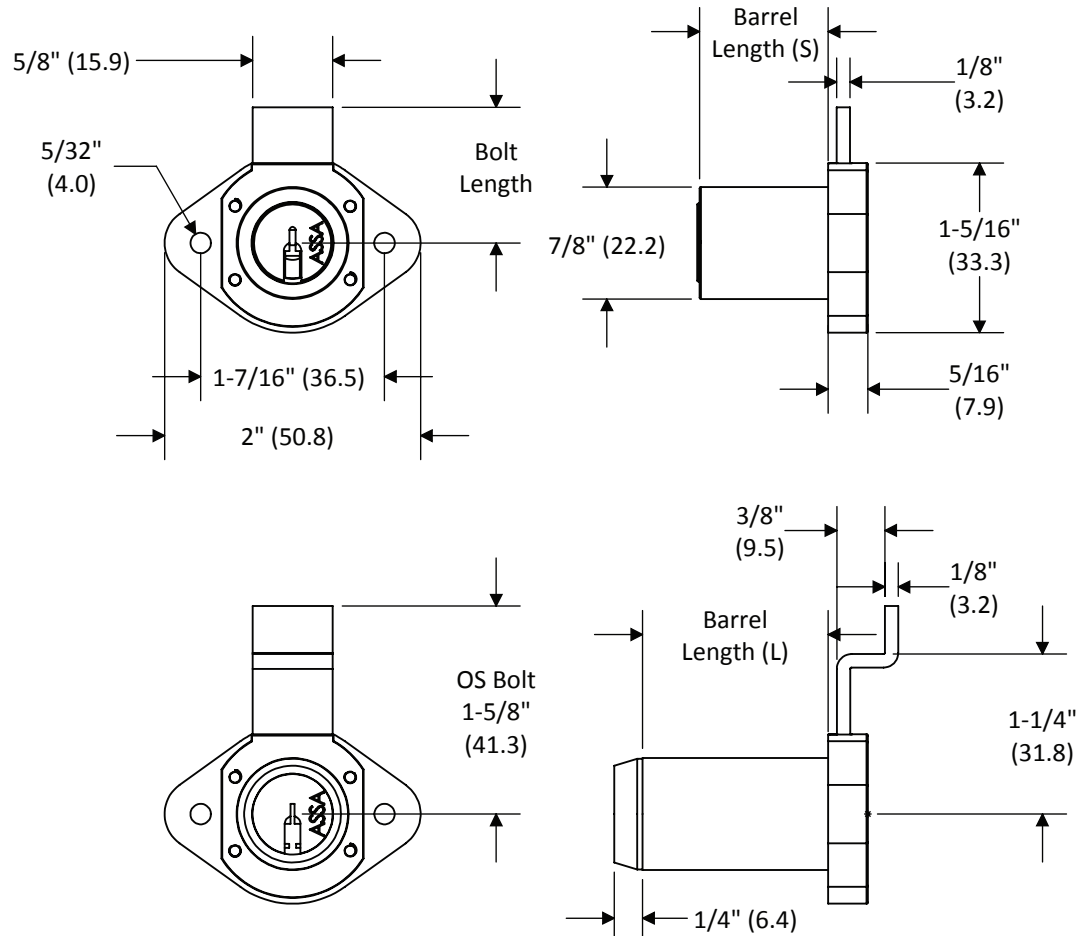
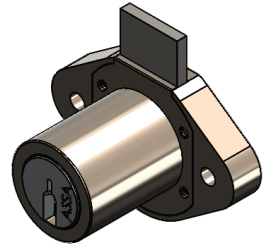
CF - Custom Finish (See Finish Page)

NOTE:

Products pictured in the locked position

Nominal Bolt travel is 7/16" (11.1 mm)

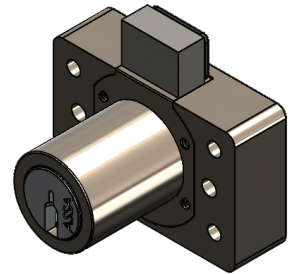
Short bolt (BS) option retracts completely into housing.



All dimensions are nominal. For best fit call for a sample.
Dual-Dimensions in parentheses are in millimeter (mm).

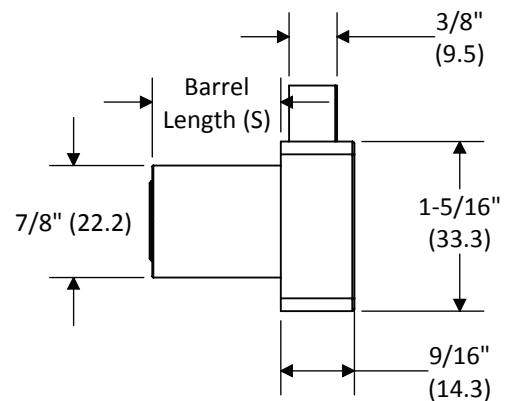
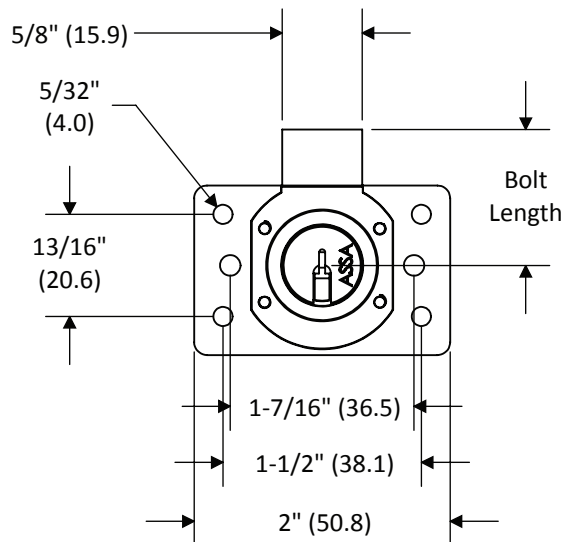
ASSA Dead Bolt "BULLDOG" Drawer Lock*

*Patent Pending

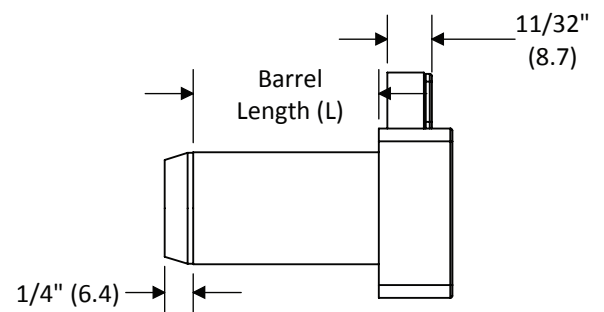
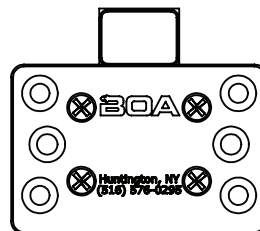


NOTE:

Products pictured in the locked position
Nominal Bolt travel is 7/16" (11.1 mm)
Short bolt (BS & BSB) option retracts
completely into housing.



Standard Bolts BS/BL



Rubber Bumper Bolts BSB/BLB

All dimensions are nominal. For best fit call for a sample.
Dual-Dimensions in parentheses are in millimeter (mm).

Part Number

11-SB- **BL** - **O** -N-

KO - **M** - **F**

BARREL LENGTH **BL**

S - 1" (25.4mm)

L - 1-7/16" (36.5mm)

ORIENTATION **O**

VI - Vertical or Inverted

LR - Left or Right

KEYED OPTION **KO**

A - Keyed Alike

D - Keyed Different

MASTER **M**

N - Non-Master

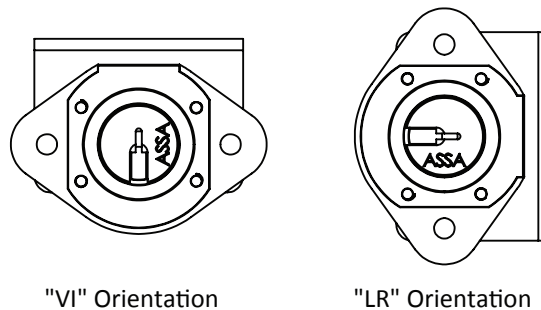
M - Single Level Master

FINISH **F**

PN - Polished Nickel

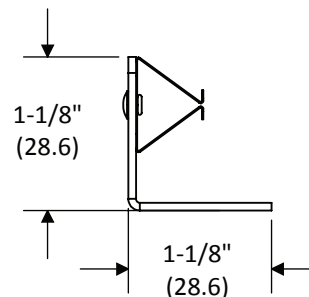
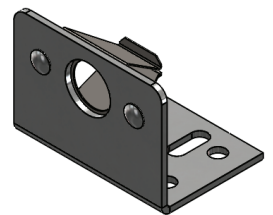
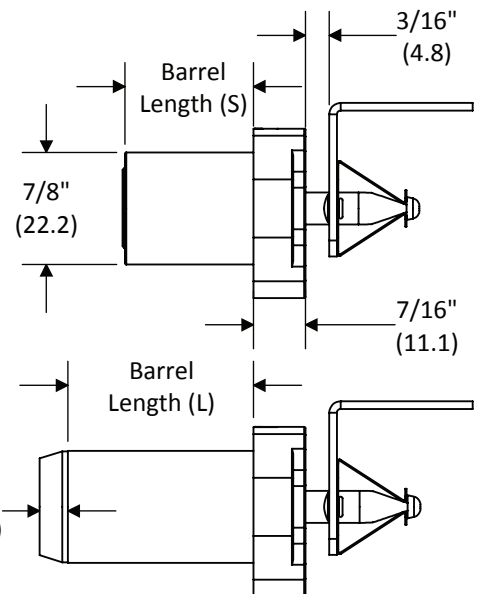
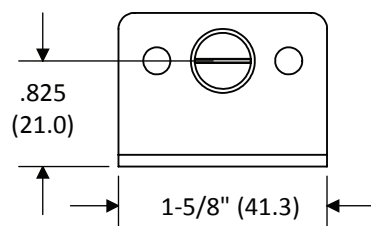
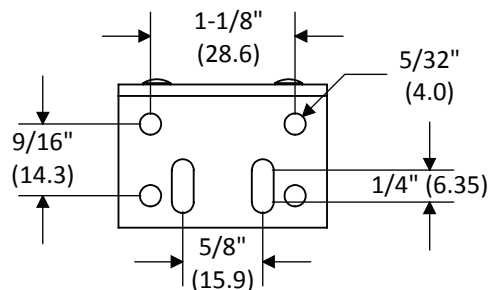
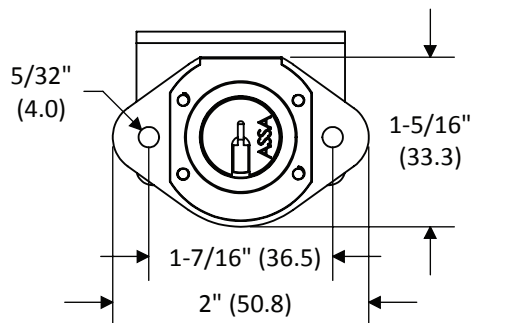
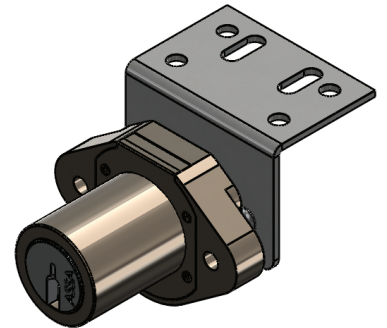
SC - Satin Chrome (US26D)

CF - Custom Finish (See Finish Page)

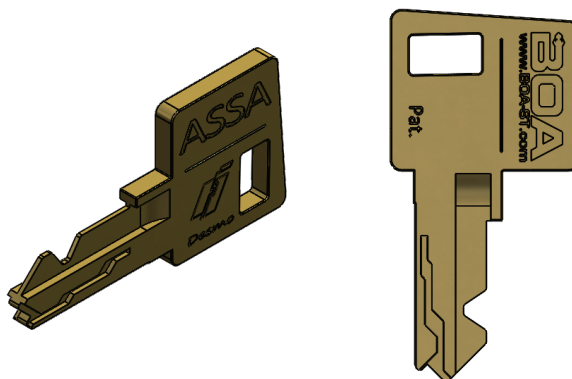


"VI" Orientation

"LR" Orientation



All dimensions are nominal. For best fit call for a sample.
Dual-Dimensions in parentheses are in millimeter (mm).

Part Number**11-KEY- FN****FUNCTION FN****OP** – Operating**M** – Single Level Master

BOA Security Technologies offers ASSA® Desmo key technology. Key control is a major advantage of ASSA Desmo maximum security protection. The keys are patent protected and can only be duplicated by authorized factory locations. The key is 30 percent thicker than most high security keys used today. The keys are constructed from solid nickel silver for lasting durability, with no deep cuts to weaken the key. The large key grip provides easy handling and adequate space for the stamping of information for easy identification. This key is backed by a lifetime key breakage warranty.

All ASSA® keys purchased through BOA must be registered with an authorized identification and signature on file. Additional keys can only be purchased with this authorization credential.

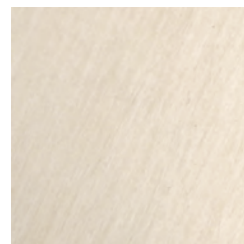
Finishes



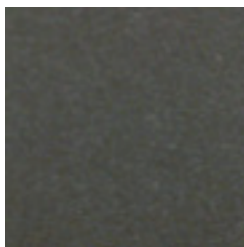
PN - Polished Nickel



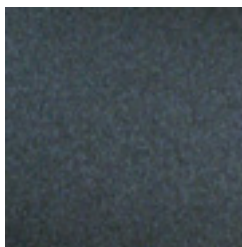
PC - Polished Chrome



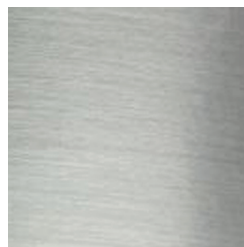
SC - Satin Chrome (US26D)



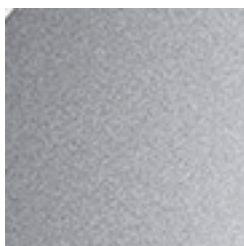
GM - Gunmetal



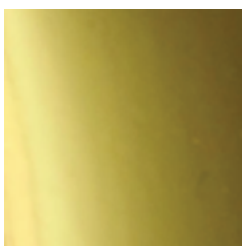
BL - Black



BC - Brushed Chrome



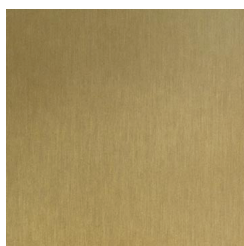
SBC - Sandblasted Chrome



PB - Polished Brass



SB - Satin Brass



SB - Statuary Bronze



CF - Custom Finish