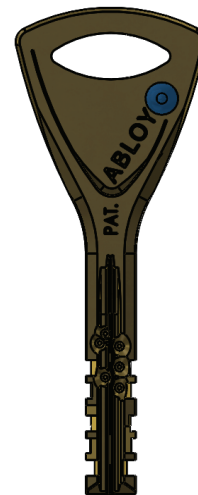
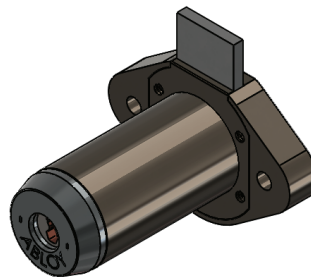


Abloy locks by BOA Security Technologies are available in a wide variety of standard sizes and functions, along with custom products to meet your specific needs. Locks can be keyed different, keyed alike, or master keyed. As a standard BOA offers the Abloy Protec Keyway. Abloy Exec, Protec2, & Sentry Keyways call for availability.

Abloy Protec Features*:

- Patented rotating disc mechanism.
- No Springs, pins, or other parts to wear out.
- Unique disc blocking system DBS™ by return bars.
- Smooth, durable, and reliable operation that is resistant to dirt and freezing.
- New cylinder construction makes Abloy Protec virtually pickproof.
- Superior master-keying possibilities.
- Meets or exceeds international standards for high security including UL 437 and EN 1303.



*Product features may vary for alternative keyways Abloy Exec, Protec2, & Sentry

Abloy Cam Lock

As a standard BOA offers the Abloy Protec Keyway
Abloy Exec, Protec2, & Sentry Keyways call for availability

Part Number

13-CL- **BL** - **R** - **D** -

C- **KO** - **M** - **F** - **C**

BARREL LENGTH **BL**

2 – 7/8" (22.2mm)

3 – 1-1/8" (28.6mm)

ROTATION **R**

90 – 90° Right

180 – 180° Right

DIRECTION **D**

RH – Right Hand

LH – Left Hand

KEYED OPTION **KO**

A – Keyed Alike

D – Keyed Different

MASTER **M**

N – Non-Master

M – Single Level Master

FINISH **F**

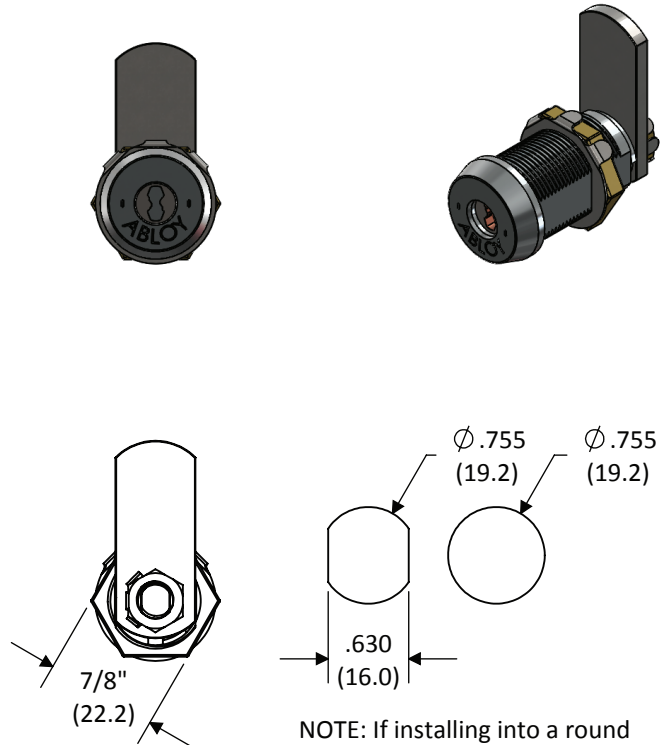
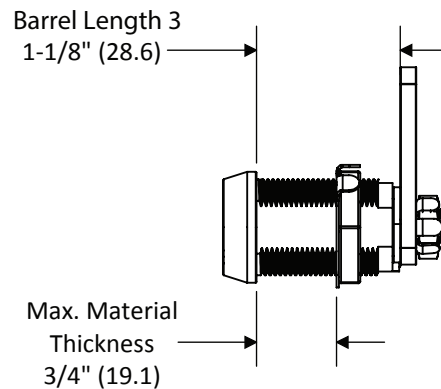
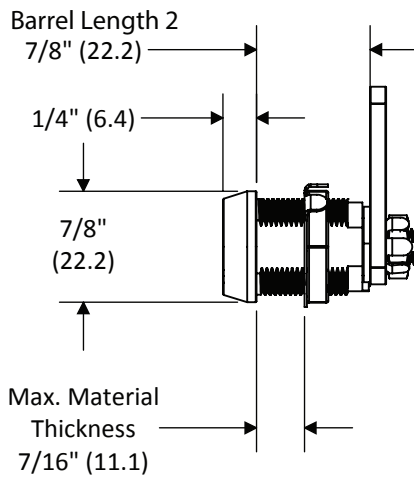
PC – Polished Chrome (Standard)

SC – Satin Chrome (US26D)

CF – Custom Finish (See Finish Page)

CAM **C**

See CAM Page for options



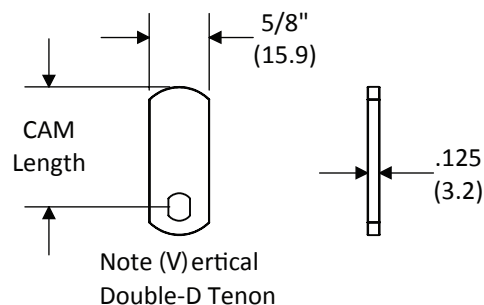
NOTE: If installing into a round hole use a Double-D mounting plate to keep the lock from spinning!

Note when selecting a CAM the threaded tail on this lock has a vertical tenon. Using "V" designation CAM's will allow for the locked at 12 o'clock orientation shown.

Package includes parts for 90° and 180° rotation.

All dimensions are nominal. For best fit call for a sample.
Dual-Dimensions in parentheses are in millimeter (mm).

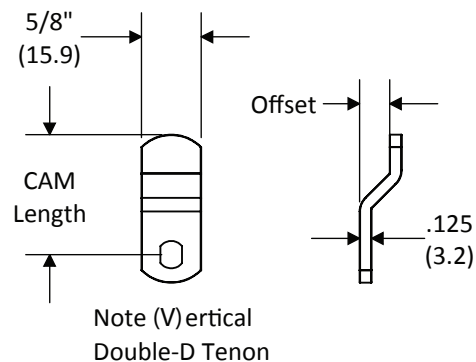
Straight Flat CAM	
Part #	CAM Length
00-CAM-0750	0.750" (19.1 mm)
00-CAM-1250	1.250" (31.8 mm)
00-CAM-1750	1.750" (44.5mm)
00-CAM-2000	2.000" (50.8 mm)



Note (H)orizontal
Double-D Tenon

Offset CAM		
Part #	CAM Length	Offset
00-CAM-1250X0313	1.250" (31.8 mm)	0.3125" (7.9 mm)
00-CAM-2000X0313	2.000" (50.8 mm)	0.3125" (7.9 mm)

Note: All CAMs are sold as a set or 2 CAMs containing both Vertical and Horizontal Tenons.



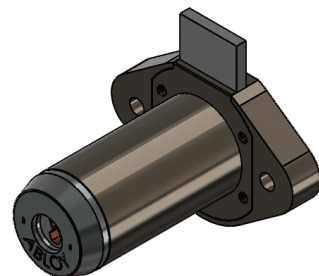
Note (H)orizontal
Double-D Tenon

**Custom sizes available.
Call for quote and details.**

All dimensions are nominal. For best fit call for a sample.
Dual-Dimensions in parentheses are in millimeter (mm).

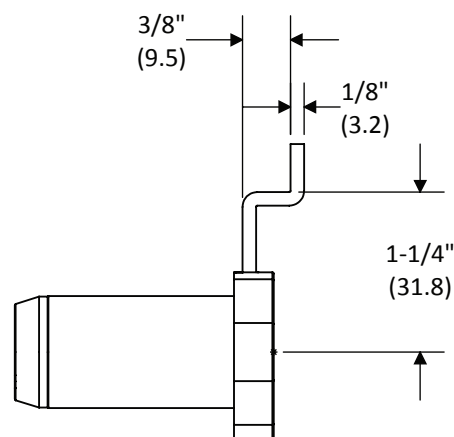
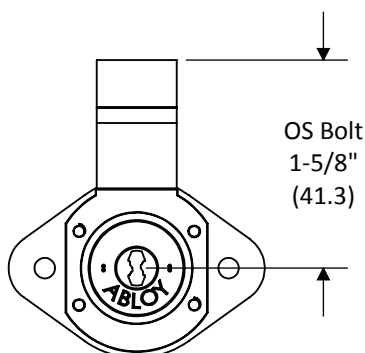
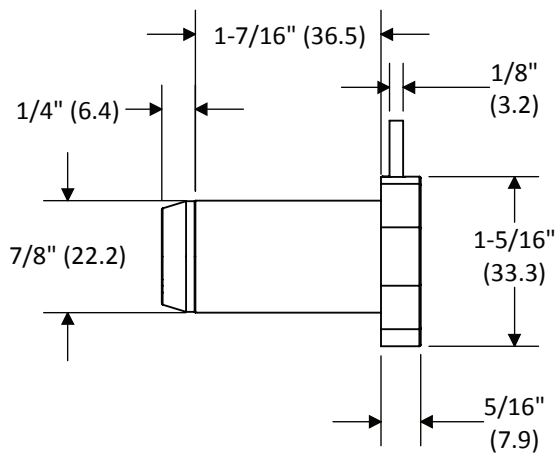
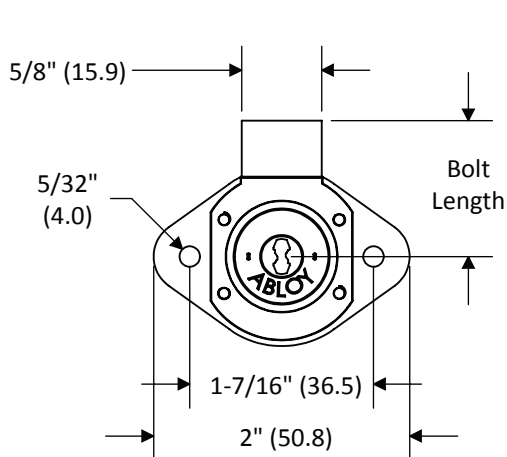
Abloy Dead Bolt Drawer Lock

As a standard BOA offers the Abloy Protec Keyway
Abloy Exec, Protec2, & Sentry Keyways call for availability



NOTE:

Products pictured in the locked position
Nominal Bolt travel is 7/16" (11.1 mm)
Short bolt (BS) option retracts completely into housing.

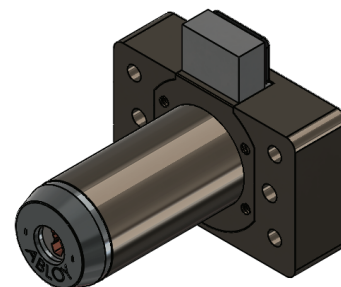


All dimensions are nominal. For best fit call for a sample.
Dual-Dimensions in parentheses are in millimeter (mm).

Abloy Dead Bolt "BULLDOG" Drawer Lock*

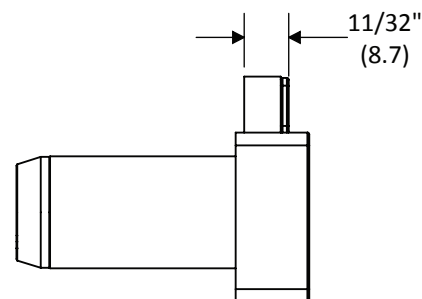
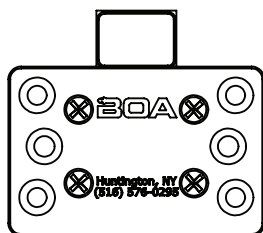
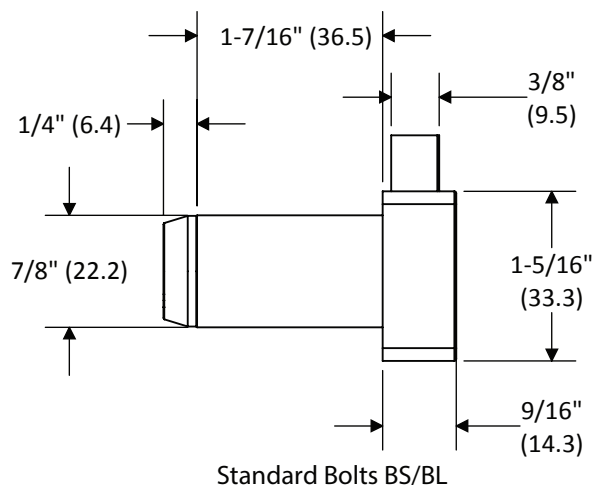
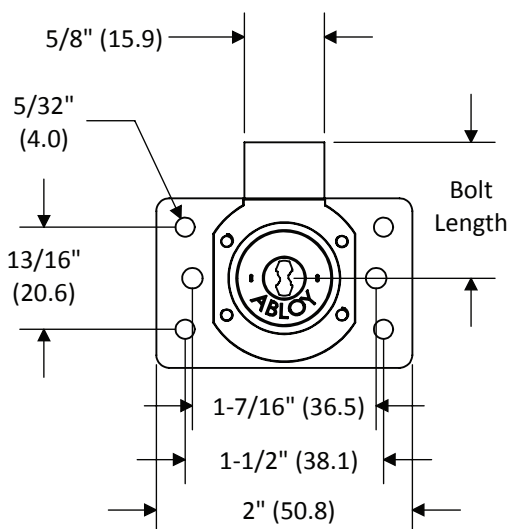
*Patent Pending

As a standard BOA offers the Abloy Protec Keyway
Abloy Exec, Protec2, & Sentry Keyways call for availability



NOTE:

Products pictured in the locked position
Nominal Bolt travel is 7/16" (11.1 mm)
Short bolt (BS & BSB) option retracts
completely into housing.



Rubber Bumper Bolts BSB/BLB

All dimensions are nominal. For best fit call for a sample.
Dual-Dimensions in parentheses are in millimeter (mm).

Part Number

13-BD-L- **B** -C- **KO** - **M** - **F**

BOLT TYPE **B**

- BS** – 1-1/16" (27.0 mm)
- BL** – 1-11/16" (42.9 mm)
- BSB** – 1-1/16" (27.0 mm)
with Rubber Bumper
- BLB** – 1-11/16" (42.9 mm)
with Rubber Bumper

KEYED OPTION **KO**

- A** – Keyed Alike
- D** – Keyed Different

MASTER **M**

- N** – Non-Master
- M** – Single Level Master

FINISH **F**

- PN** - Polished Nickel
- SC** - Satin Chrome (US26D)
- CF** - Custom Finish (See Finish Page)

Abloy Snap Bolt Drawer Lock

As a standard BOA offers the Abloy Protec Keyway
Abloy Exec, Protec2, & Sentry Keyways call for availability

Part Number

13-SB-L-**O**-N-KO-M-F

ORIENTATION **O**

VI - Vertical or Inverted

LR - Left or Right

KEYED OPTION **KO**

A - Keyed Alike

D - Keyed Different

MASTER **M**

N - Non-Master

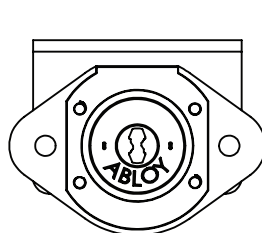
M - Single Level Master

FINISH **F**

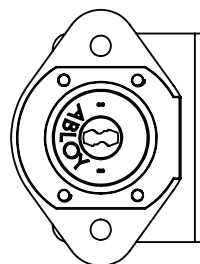
PN - Polished Nickel

SC - Satin Chrome (US26D)

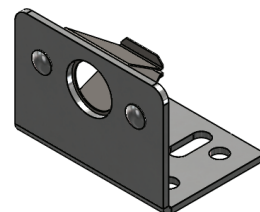
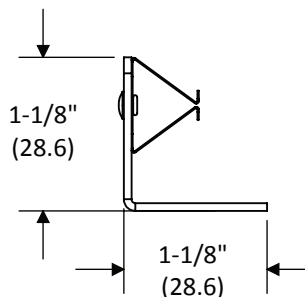
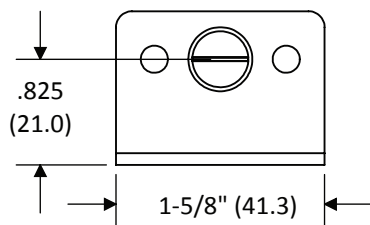
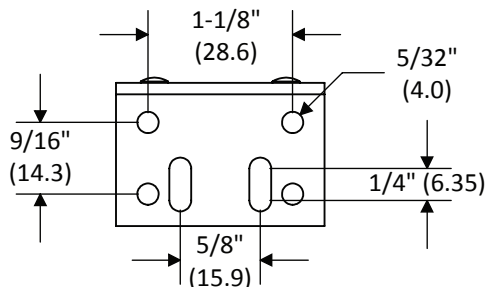
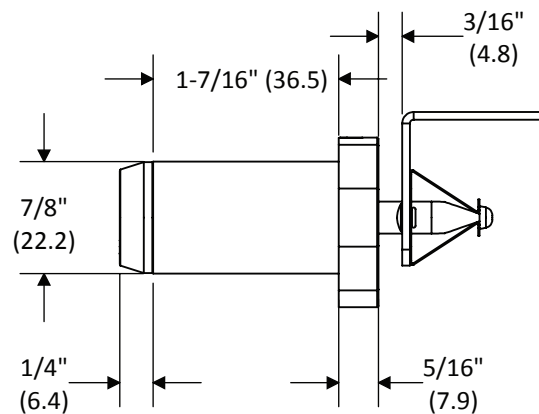
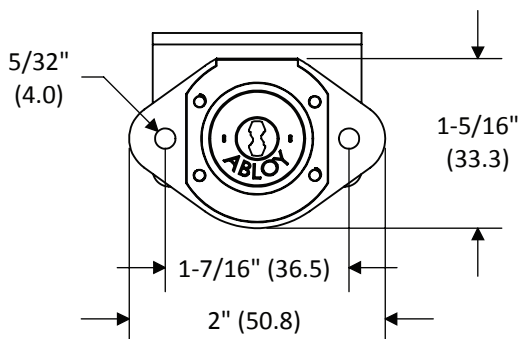
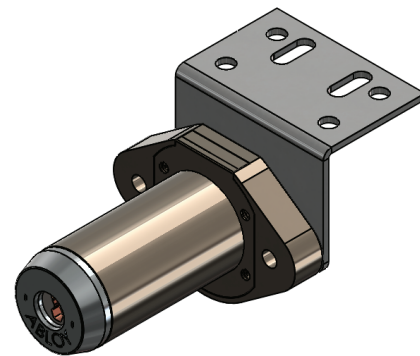
CF - Custom Finish (See Finish Page)



"VI" Orientation



"LR" Orientation



All dimensions are nominal. For best fit call for a sample.
Dual-Dimensions in parentheses are in millimeter (mm).

As a standard BOA offers the Abloy Protec Keyway
Abloy Exec, Protec2, & Sentry Keyways call for availability

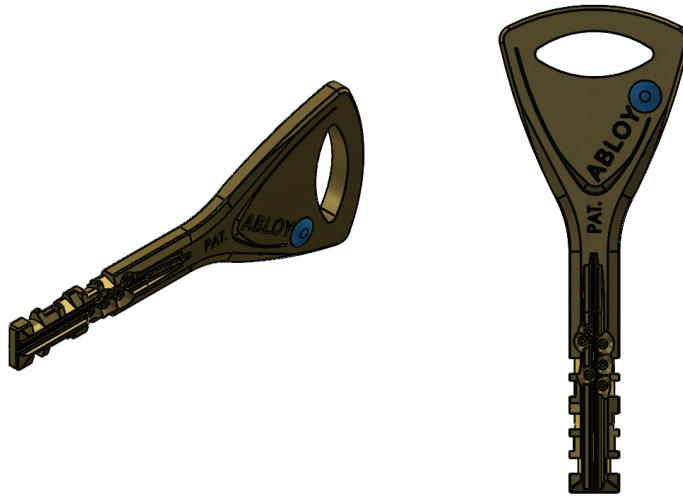
Part Number

13-KEY- **FN**

FUNCTION **FN**

OP – Operating

M – Single Level Master



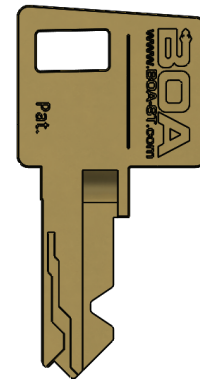
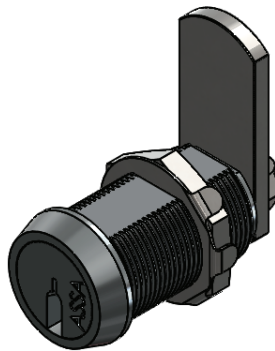
BOA Security Technologies offers Abloy key technology which features strict key control protected by a world-wide patent. Keys are cut on a dedicated Abloy key cutting machine also helping to maintain key control (Protec keys are cut with a unique patented 2R™ two radii system). 1.97 billion different key combinations allow for superior master-keying possibilities. The all metal keys are conveniently reversible for ease of use and meet no resistance when inserted resulting in virtually no wear.

All Abloy keys purchased through BOA must be registered with an authorized identification and signature on file. Additional keys can only be purchased with this authorization credential.

ASSA Desmo locks by BOA Security Technologies are available in a wide variety of standard sizes and functions, along with custom products to meet your specific needs. Locks can be keyed different, keyed alike, or master keyed.

Features:

- Patent protected extra heavy duty keys
- Restricted keys can only be cut at factory authorized locations.
- Precision Drive Pin system which is patent protected and mechanically operated without springs by the side cuts on the key. Spring-free construction maximizes pick resistance and physical security.
- 8 Locking pin dual side bar design provides 2x as much resistance against attempts to forcibly torque the lock open.
- Available restricted keyways and high level of key control. Additional keys will only be released with an authorized signature.



Part Number

11-CL- **BL** - **R** - **P** -

KO - **M** - **F** - **C**

BARREL LENGTH **BL**

- 1** – 5/8" (15.9mm)
- 2** – 7/8" (22.2mm)
- 3** – 1-1/8" (28.6mm)

ROTATION **R**

- 90** – 90° Right
- 180** – 180° Right
(Call for info on Left-hand rotation)

KEY PULLS **P**

- C** – Captive Key Retaining
(90° Rotation Only)
- N** – Non-Captive 2 Key Pulls
(180° Rotation Only)

KEYED OPTION **KO**

- A** – Keyed Alike
- D** – Keyed Different

MASTER **M**

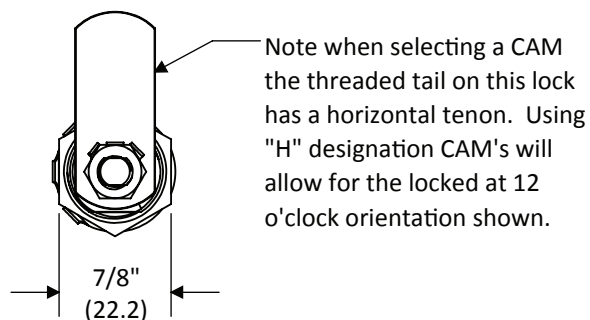
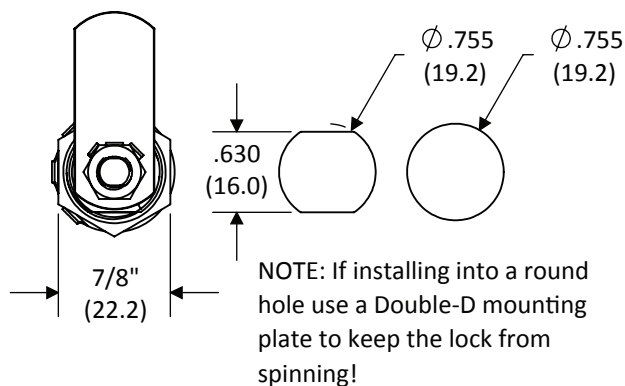
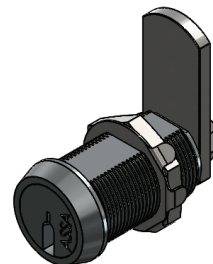
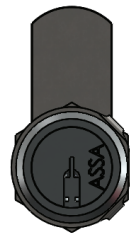
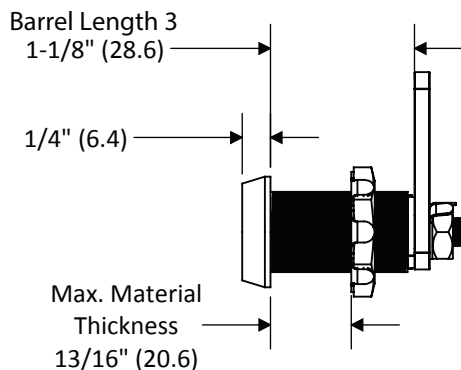
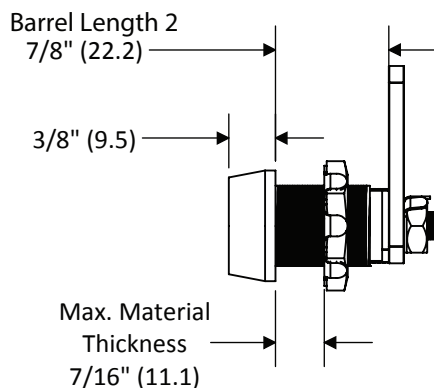
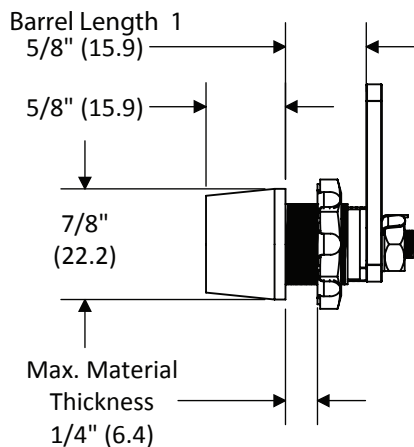
- N** – Non-Master
- M** – Single Level Master

FINISH **F**

- PC** – Polished Chrome (Standard)
- SC** – Satin Chrome (US26D)
- CF** – Custom Finish (See Finish Page)

CAM **C**

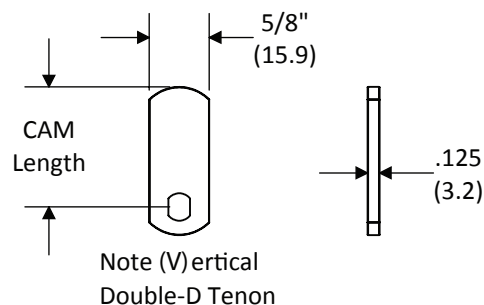
See CAM Page for options



Package includes parts for 90° and 180° rotation.

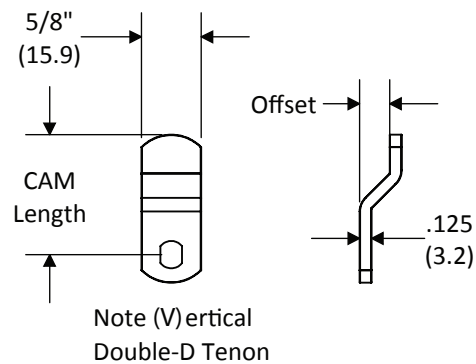
All dimensions are nominal. For best fit call for a sample.
Dual-Dimensions in parentheses are in millimeter (mm).

Straight Flat CAM	
Part #	CAM Length
00-CAM-0750	0.750" (19.1 mm)
00-CAM-1250	1.250" (31.8 mm)
00-CAM-1750	1.750" (44.5mm)
00-CAM-2000	2.000" (50.8 mm)



Offset CAM		
Part #	CAM Length	Offset
00-CAM-1250X0313	1.250" (31.8 mm)	0.3125" (7.9 mm)
00-CAM-2000X0313	2.000" (50.8 mm)	0.3125" (7.9 mm)

Note: All CAMs are sold as a set or 2 CAMs containing both Vertical and Horizontal Tenons.



**Custom sizes available.
Call for quote and details.**

All dimensions are nominal. For best fit call for a sample.
Dual-Dimensions in parentheses are in millimeter (mm).

ASSA Dead Bolt Drawer Lock

Part Number

11-DB- **BL** - **B** - **P** -

KO - **M** - **F**

BARREL LENGTH **BL**

S – 1" (25.4mm)

L – 1-7/16" (36.5mm)

BOLT TYPE **B**

BS – 1-1/16" (27.0 mm)

BL – 1-11/16" (42.9 mm)

BXL – 3-1/8" (79.4 mm)

OS – 3/8" (9.5 mm) Offset Bolt

KEY PULLS **P**

C – Captive Key Retaining
(90° Rotation Only)

N – Non-Captive 2 Key Pulls
(180° Rotation Only)

KEYED OPTION **KO**

A – Keyed Alike

D – Keyed Different

MASTER **M**

N – Non-Master

M – Single Level Master

FINISH **F**

PN - Polished Nickel

SC - Satin Chrome (US26D)

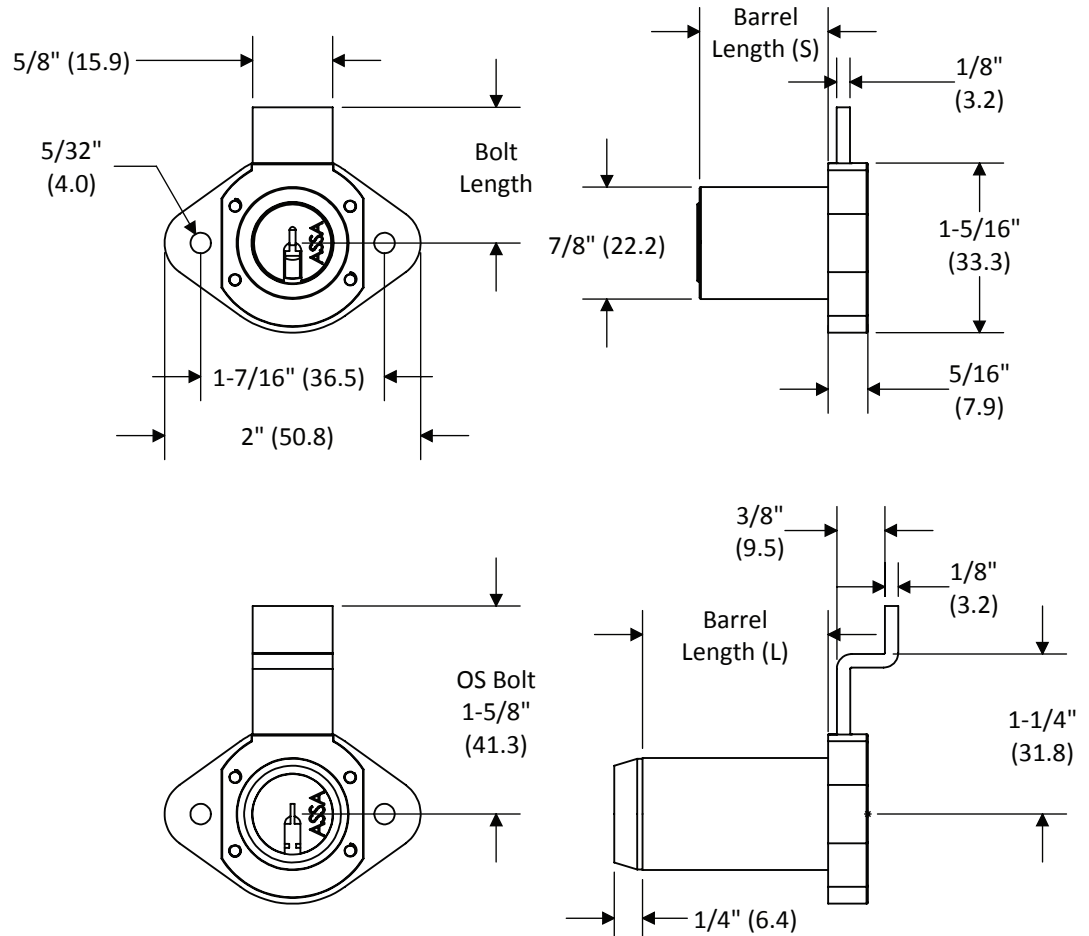
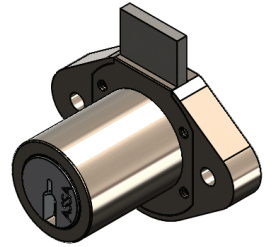
CF - Custom Finish (See Finish
Page)

NOTE:

Products pictured in the locked position

Nominal Bolt travel is 7/16" (11.1 mm)

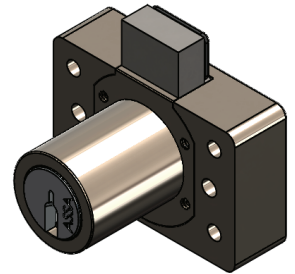
Short bolt (BS) option retracts completely into housing.



All dimensions are nominal. For best fit call for a sample.
Dual-Dimensions in parentheses are in millimeter (mm).

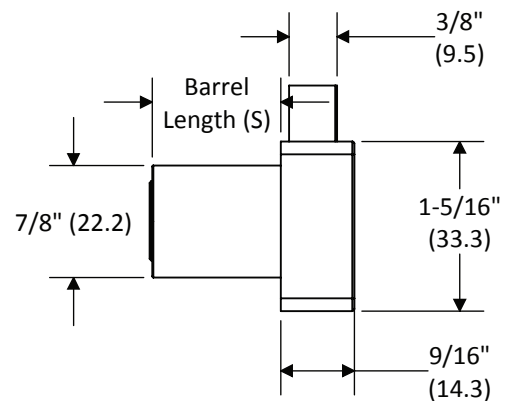
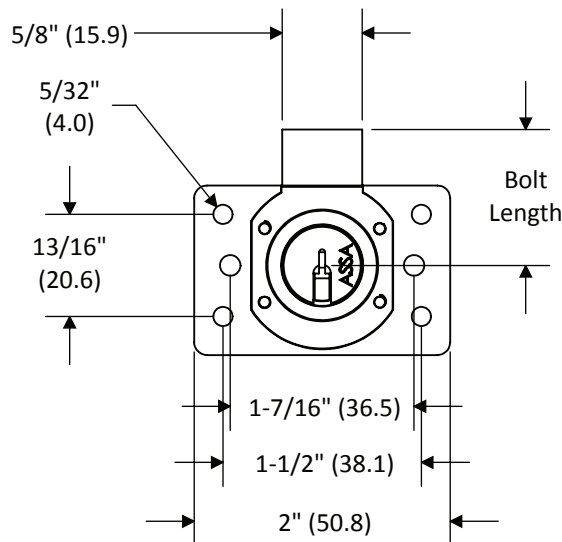
ASSA Dead Bolt "BULLDOG" Drawer Lock*

*Patent Pending

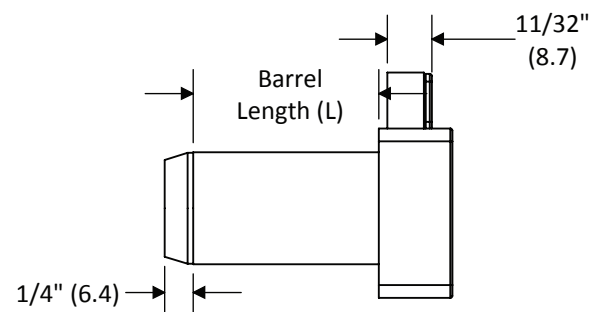
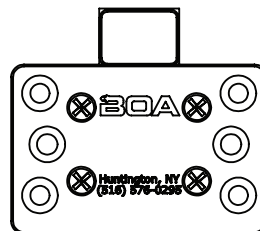


NOTE:

Products pictured in the locked position
Nominal Bolt travel is 7/16" (11.1 mm)
Short bolt (BS & BSB) option retracts
completely into housing.



Standard Bolts BS/BL



Rubber Bumper Bolts BSB/BLB

All dimensions are nominal. For best fit call for a sample.
Dual-Dimensions in parentheses are in millimeter (mm).

Part Number

11-SB- **BL** - **O** -N-

KO - **M** - **F**

BARREL LENGTH **BL**

S - 1" (25.4mm)

L - 1-7/16" (36.5mm)

ORIENTATION **O**

VI - Vertical or Inverted

LR - Left or Right

KEYED OPTION **KO**

A - Keyed Alike

D - Keyed Different

MASTER **M**

N - Non-Master

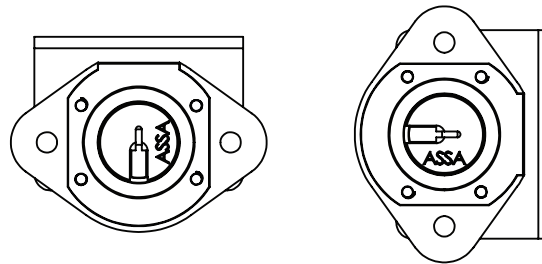
M - Single Level Master

FINISH **F**

PN - Polished Nickel

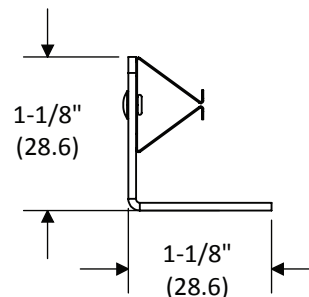
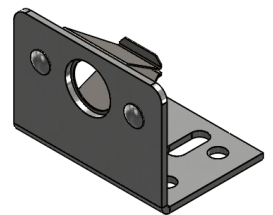
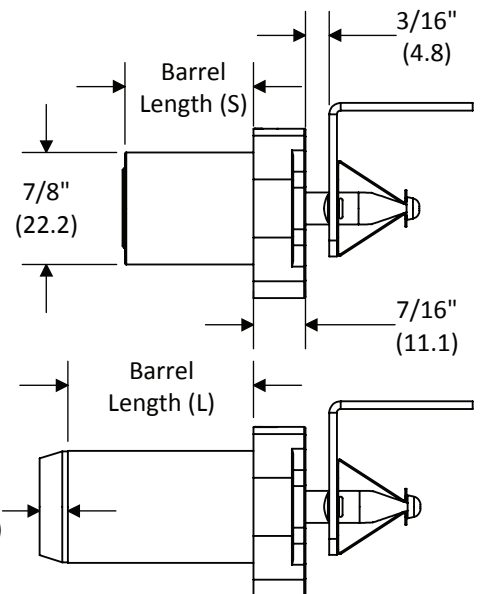
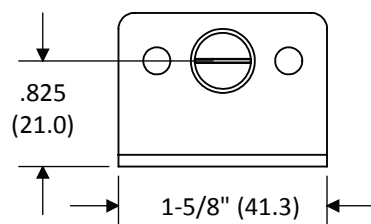
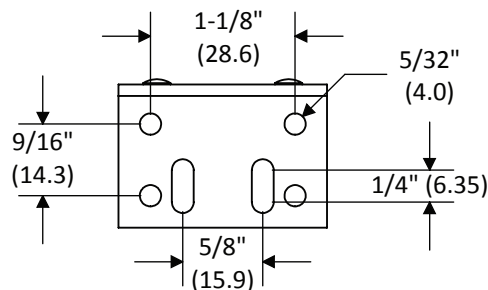
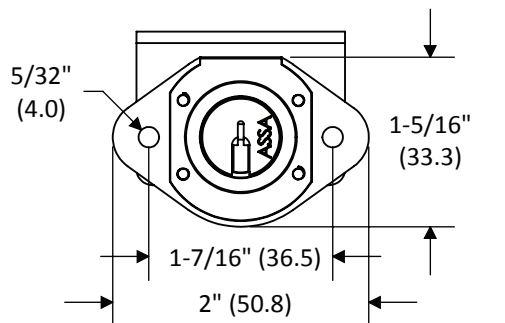
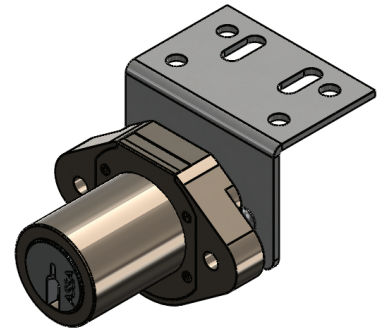
SC - Satin Chrome (US26D)

CF - Custom Finish (See Finish Page)

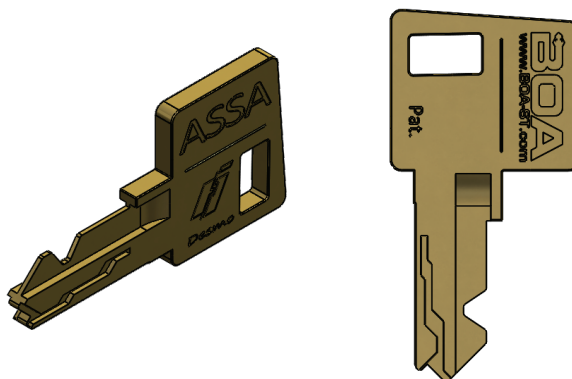


"VI" Orientation

"LR" Orientation



All dimensions are nominal. For best fit call for a sample.
Dual-Dimensions in parentheses are in millimeter (mm).

Part Number**11-KEY- FN****FUNCTION FN****OP** – Operating**M** – Single Level Master

BOA Security Technologies offers ASSA® Desmo key technology. Key control is a major advantage of ASSA Desmo maximum security protection. The keys are patent protected and can only be duplicated by authorized factory locations. The key is 30 percent thicker than most high security keys used today. The keys are constructed from solid nickel silver for lasting durability, with no deep cuts to weaken the key. The large key grip provides easy handling and adequate space for the stamping of information for easy identification. This key is backed by a lifetime key breakage warranty.

All ASSA® keys purchased through BOA must be registered with an authorized identification and signature on file. Additional keys can only be purchased with this authorization credential.

Electronic Locking Systems

Features:

- Modular locking system for doors and drawers.
- Low voltage operation - operates on 12VDC (some have operational power range).
- Works with individual power supply units or central power supplies with optional battery backup.
- Option for fail safe (unlocks when power is lost).
- Option for fail secure (remains locked when power is lost).
- Slam Function (allows door or drawer to close and secure without requiring unlocking).
- Allows multiple controllers to connect to power supply.
- Allows multiple locks to connect with controllers.

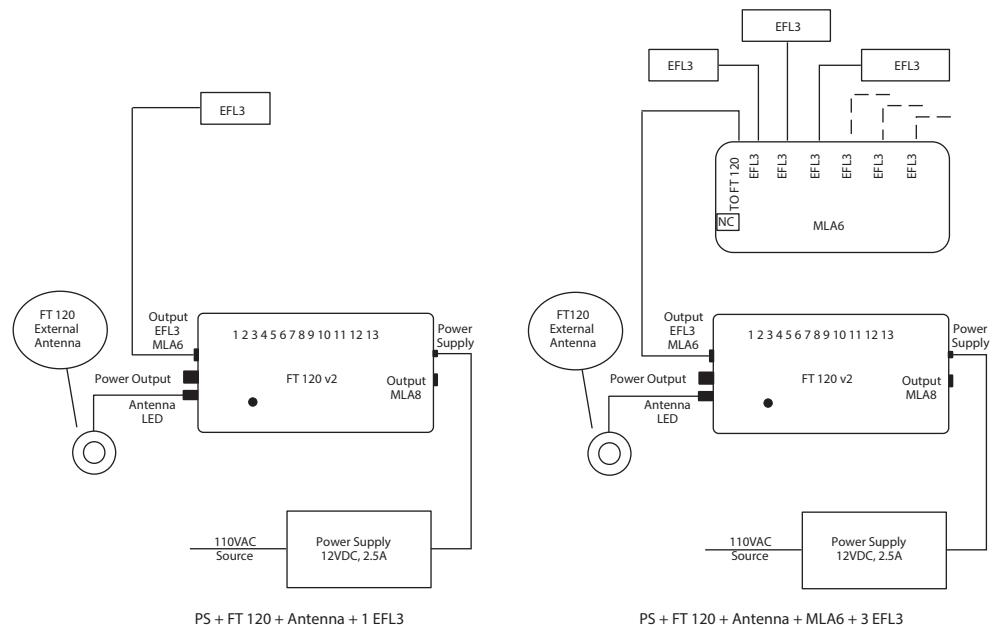
Components:

- Electronic Locks
- Door Locks
- Sliding Door Locks
- Drawer Locks

Control Devices:

- RF switches with RFID key cards

Note: Not all components are interchangeable. Verify that components can be combined.



Note: Example setups.

69-FT120-TAG-SET

(External antenna ready pack set for single locking system)

Set Components

	Description	Qty	Item No.
	FT 120 Tag-it™ for External Antenna	1 pc.	69-FT120-TAG-CTLR
	External Antenna 3m for FT 120 Tag-it™	1 pc.	69-FT120-TAG-ANT-3M
	Green Programming Add key tag	1 pc.	69-KEY-TAG-GRN-ADD
	Red Programming Delete key tag	1 pc.	69-KEY-TAG-RD-DEL
	Gray user key tag	5 pcs.	69-KEY-TAG-GRY-USER
	12V DC Power Supply with Plug	1 set	69-TRN-12VDC-2.5A

Note:

Each set is pre-programmed with all supplied keys.

Also supplied with Open Time Transponder card (69-CRD-TAG-CONF-OPEN74).

Additional components needed for a complete locking system consist of:

- Electronic Locks
- Distribution blocks
- Extension cords (order as required)

The sets are capable of controlling the following quantity of each type of lock:

- EFL3(C) - 11 pcs
- EFL6(C) - 4 pcs
- EFL10(C) - 3 pcs
- MCL1 - 7 pcs

An external relay (69-EXT-RLY) may be used to increase the number of locks being controlled by a single FT120 unit.

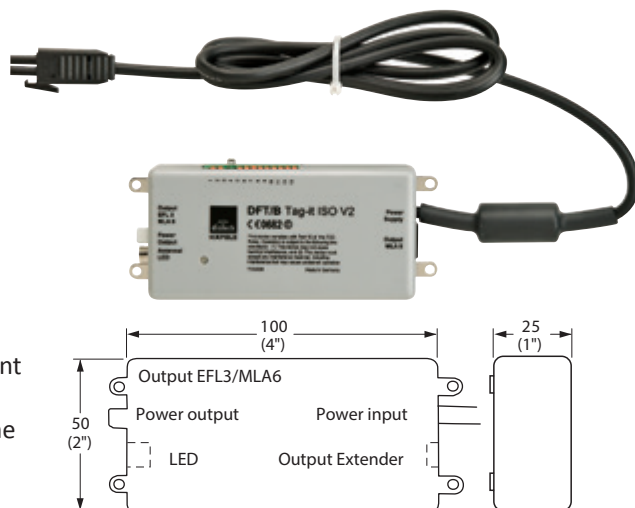
69-FT120-TAG-CTLR

Features:

- Up to 228 keys can be authorized at a single terminal.
- Indication of lock state through LEDs (red/green) and audible beep.
- Configurable locking state.
- Cycle operation: Can be configured for 1-120 seconds with optional configuration key card (Pre-set default time 3 seconds).
- Toggle operation: Present key to open, re-present key to lock.
- If an authorized electronic key is presented to the unit, all locks are activated simultaneously.
- Optional output extender: If an authorized electronic key is presented to the unit, independent control of up to 8 electronic locking units is possible.
- Optional LED interface (customer supplied).

Specifications:

Voltage required:	12-17 VDC or 11-14 VAC
Switching voltage rating:	14V
Current consumption	
Continuous:	75 mA
Peak:	750 mA
Output extender:	50 mA each
Temperature range:	0 °C - 60 °C (32 °F - 140 °F) (Inside only)



Note:

FT120 unit formerly known as DFT.

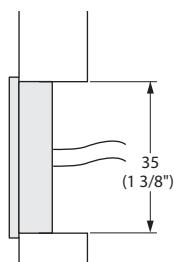
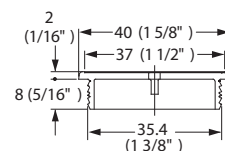
Supplied with:

- (1x) electronic lock controller
- Mounting tabs
- Extension cord 1 m (39-3/8")

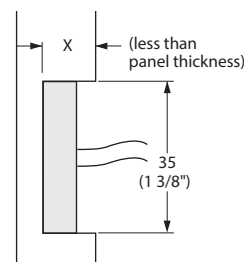
69-FT120-TAG-ANT-1M

69-FT120-TAG-ANT-3M

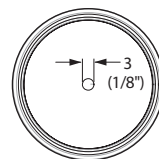
(External antenna for use with FT120 unit)



External mounting



Internal mounting



69-EFL3-LOCK

(without door status contact)

69-EFL3-LOCK-C

(with door status contact)

Features:

- Slam function.
- Fail secure.
- Flat design allows for mounting beneath or beside drawers.
- Electromotive locking mechanism cannot be influenced by magnetic fields.
- Integrated contact "Lock closed/open".
- Optional: Additional contact "locking piece engaged" for door status monitoring.
- Mount with 2x #6 Flat Head screws (not included).

Supplied with:

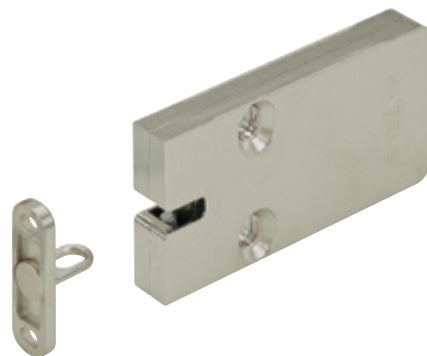
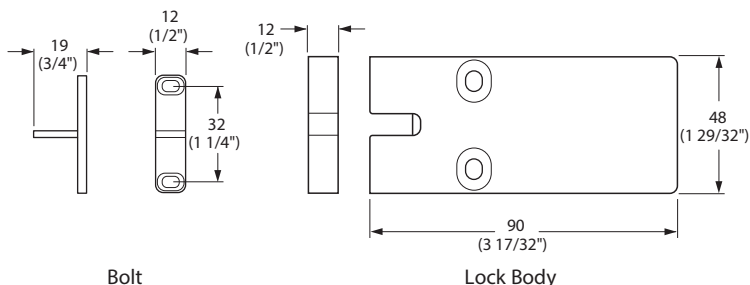
- (1x) electronic locking unit
- (1x) lock bolt (69-EFL3-BOLT-X)

Specifications:

Voltage required:	12VDC \pm 10% (not polarity sensitive)
Current consumption	
Continuous:	10 mA
Peak:	100 mA for < 40 mS
Duty cycle rating:	Continuous duty (no time limit)
Heat generated:	0.12 Watt
Temperature range:	4 °C - 49 °C (40 °F - 120 °F) 20%~95% RH non condensing
Tensile load limit:	
- Locking bolt:	1000 N (225lbf.) holding strength
Min. door width:	200mm (7-7/8")
Connections:	Cables not included (see page 13)

Note:

The mounting plate of the locking piece can be installed against a furniture handle on the opposite side (drilling distance: 32 mm (1-1/4")). Multiple EFL3 locks can be connected to the FT120 in parallel (keyed alike). Drill jig required to mount the lock. Marking gauge is recommended to mount the locking pieces.



Locking Bolts for 69-EFL3-LOCK(C)

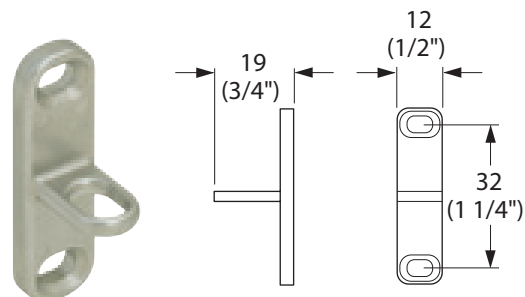
69-EFL3-BOLT-X (Standard Bolt)

(without door status contact)

69-EFL3-BOLT-X-C

(with door status contact)

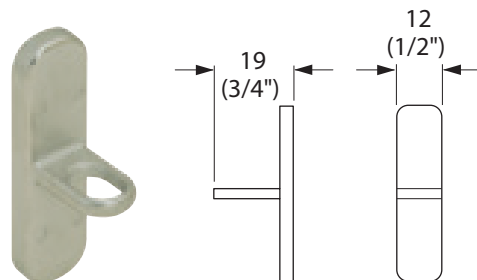
Description: Standard locking bolt for EFL3/EFL3C style lock with crossways locking loop.



69-EFL3-BOLT-X-GL

(without door status contact)

Description: Locking bolt for EFL3/EFL3C style lock with crossways locking loop. Strike/bolt is for glass mount installations.



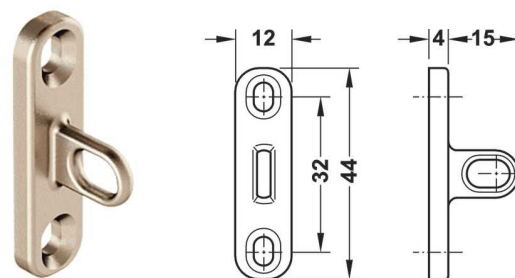
69-EFL3-BOLT-L

(without door status contact)

69-EFL3-BOLT-L-C

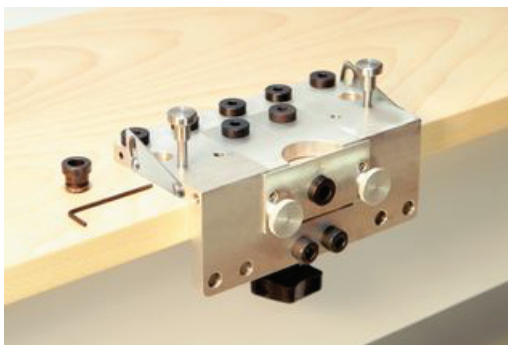
(with door status contact)

Description: Standard locking bolt for EFL3/EFL3C style lock with lengthways locking loop.



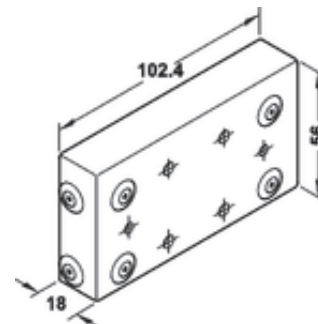
69-EFL3-DRILLJIG

Drill Jig for installation of EFL3/EFL3C locking unit.



69-EFL3-MARKGAUGE

Marking Gauge for installation of EFL3/EFL3C locking unit.



69-EFL6-LOCK

(without door status contact)

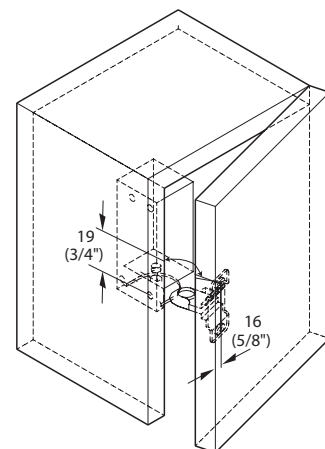
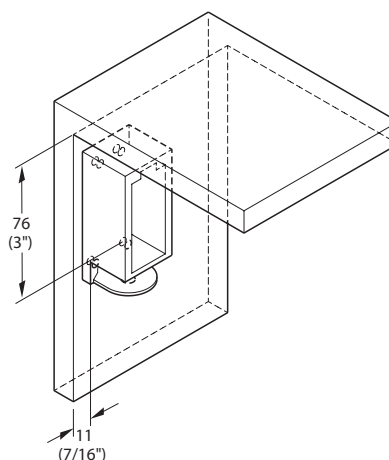
Features:

- Slam function.
- Field changeable from fail secure to fail safe.
- Silent operation.
- Compact and lightweight.
- Low operating and standby power consumption.
- Door status monitoring built into lock.
- Suitable for use with self closing hinges and slides.



Supplied with:

- (1x) electronic locking unit
- (1x) lock bolt (69-EFL6-BOLT)
- Male AMP connection (2m Cable)
- Mounting hardware
- Instructions

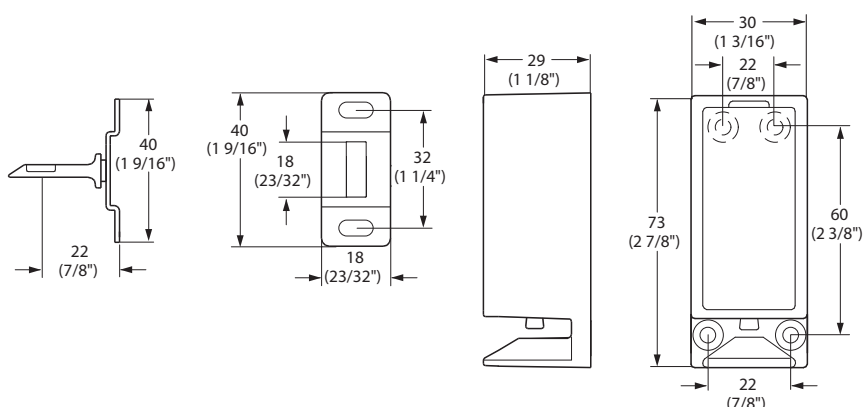


Specifications:

Voltage required:	12VDC
Continuous Current:	190 mA
Duty cycle rating:	Continuous duty
Heat generated:	2.3 Watt (max.)
Temperature range:	4 °C - 49 °C (40 °F - 120 °F)
Tensile load limit:	90 kg (200 lb)
Min. door width:	240mm (9-1/2'')
Connections:	2m cable w/ male AMP connection

Note:

This locking unit must be wired to a controllable power source prior to installation of the locking bolt/strike plate. Failure to do so will result in the system being locked out!



69-EFL6-LOCK-C

(with door status contact)

Features:

- Slam function.
- Field changeable from fail secure to fail safe.
- Silent operation.
- Compact and lightweight.
- Low operating and standby power consumption.
- Door status monitoring built into lock.
- Suitable for use with self closing hinges and slides.

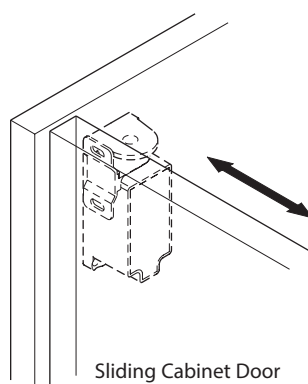


Supplied with:

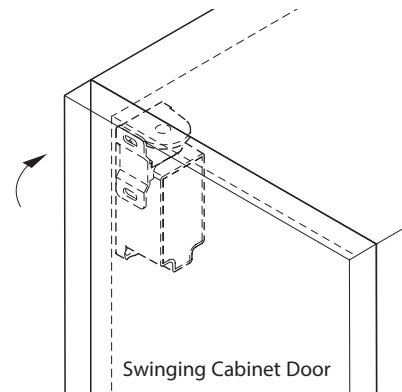
- (1x) electronic locking unit
- (1x) lock bolt (69-EFL6-BOLT)
- Male AMP connection (2m Cable)
- Mounting hardware
- Instructions

Specifications:

Voltage required:	12VDC
Continuous current:	184 mA
Duty cycle rating:	Continuous duty
Heat generated:	2.2 Watt (max.)
Temperature range:	-10 °C - 40 °C (14 °F - 104 °F)
Humidity (operating):	0-95% non-condensing
Tensile load limit:	200 kg (440 lb)
Min. door width:	240mm (9-1/2")
Connections:	
Power:	2m cable w/ male AMP connection
Door status:	2m cable (3 wire tinned ends)
Operating cycles:	500,000
Standards compliance:	CE

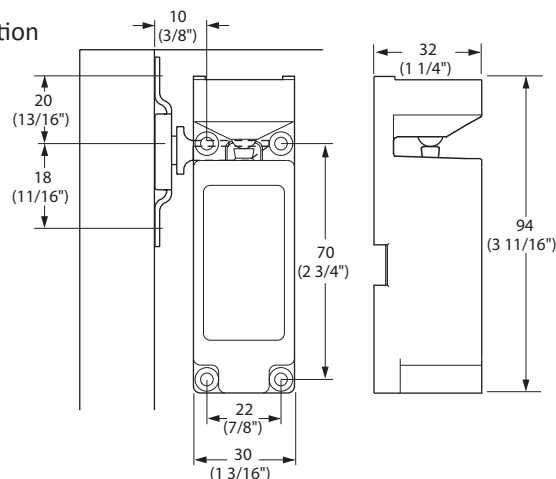
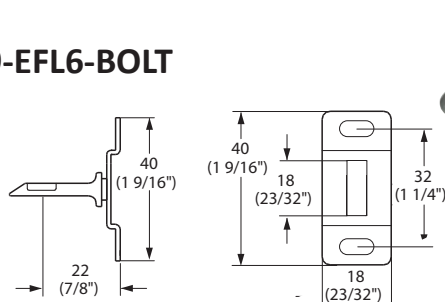


Sliding Cabinet Door



Swinging Cabinet Door

69-EFL6-BOLT



69-EFL10-LOCK

(without door status contact)

69-EFL10-LOCK-C

(with door status contact)

Features:

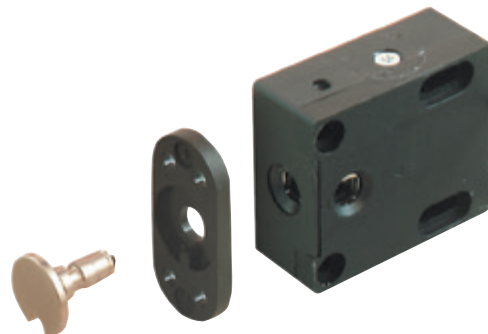
- Slam function.
- Field changeable from fail secure to fail safe.
- Mount with 2x #6 Flat Head screws.

Supplied with:

- (1x) electronic locking unit
- (1x) lock bolt (69-EFL10-BOLT)
- Mounting hardware

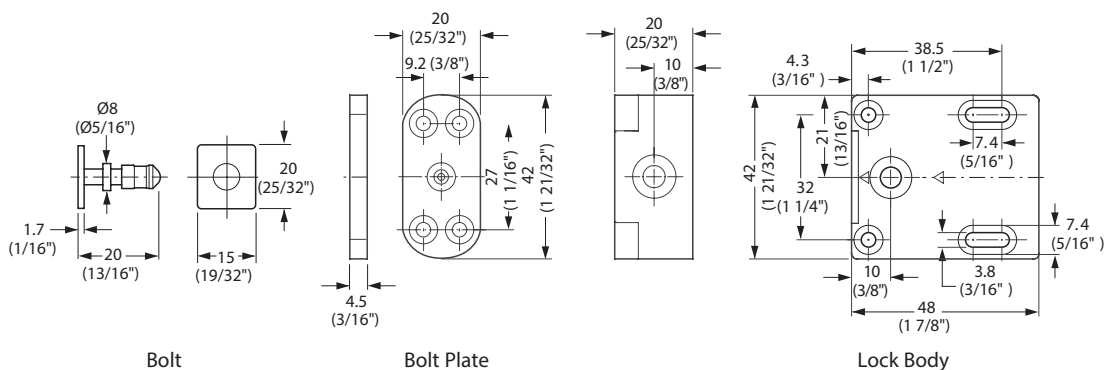
Specifications:

Voltage required:	12VDC \pm 10% (not polarity sensitive)
Continuous current:	260 mA
Duty cycle rating:	Continuous duty
Heat generated:	3.12 Watt
Temperature range:	10 °C - 40 °C (50 °F - 104 °F)
Tensile load limit:	
- Metal bolt:	1000 N (225lbf.)
Min. door width:	200mm (7-7/8")
Connections:	Cables not included (see page 13)



Note:

Not applicable for self closing hinges or slides.



Bolt

Bolt Plate

Lock Body

69-MCL1-LOCK

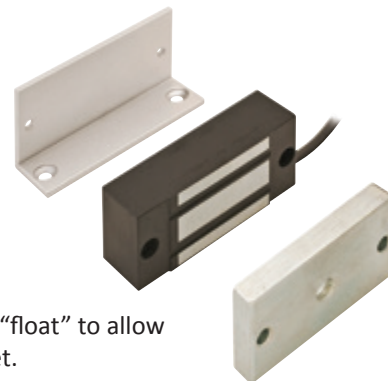
(Must be used in conjunction with the 69-EXT-RLY external relay unit!)

Features:

- High tensile load retention.
- Fail safe operation.
- Silent operation.
- Compact and lightweight.
- Flexible mounting options.
- Releases under pre-load.

Note:

Armature plate should “float” to allow alignment with magnet.



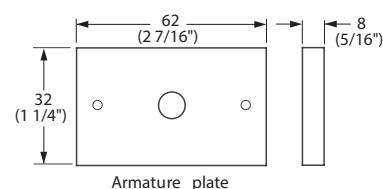
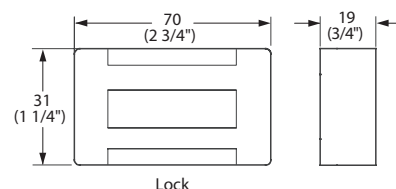
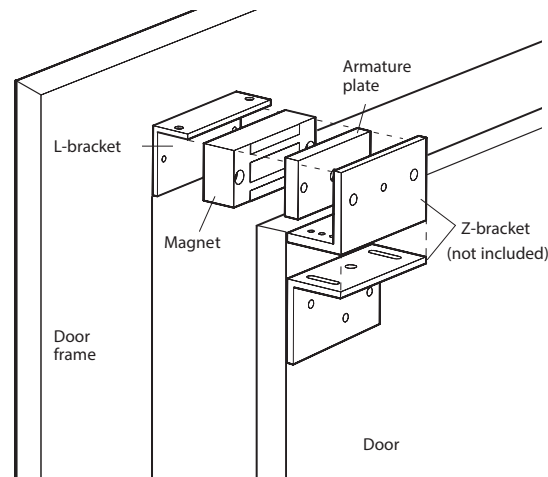
Supplied with:

- (1x) electronic magnet
- (1x) armature plate
- L-bracket
- Male amp connection (2m Cable)
- Mounting hardware
- Instructions

Specifications:

Physical & performance at 25 °C (77 °F)
 Weight: 400 g (14 oz)
 Max. holding load: 364 N (80 lbf.)
 Environmental
 Operating temperature: -15 °C - 40 °C (5 °F - 104 °F)
 Storage temperature: -55 °C - 85 °C (-67 °F - 185 °F)
 Humidity (operating): 95% RH at 50 °C (+122 °F)
 Non-combustible
 Corrosion resistant finish
 Fluid/Dust resistance

Electrical
 Voltage required: 12VDC
 Power consumption: < 1.2 W
 Continuous Current: 100 mA



69-FT120-MLA6

(Multi-Lock Adapter)

Features:

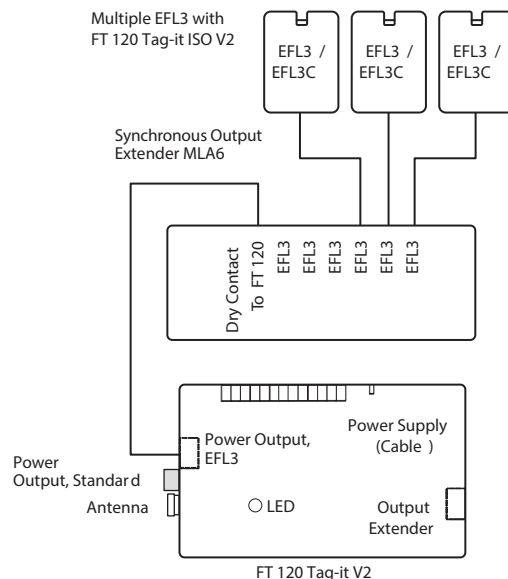
- Easy wiring of locks.
- Modular connection of the MLA6 to a FT120 with included cable.
- Potential free clamp terminal delivers lock status signal.
- Status of the monitoring contacts is available for third party applications such as additional alarm, messages, etc...
- No wiring required to route the EFL3 monitor contacts to the FT120.
- Connect up to 6 EFL3(C) units.
- If two MLA6 adapters are daisy-chained together, 11 EFL3(C)'s can be controlled by a single FT120 unit.

Supplied with:

- (1x) multi-lock adapter
- Mounting block
- 0.5 m (1.64') cable
- Instructions

Specifications:

Housing dimensions:	13 x 42 x 22 mm (5-11/32" x 1-11/16" x 7/8")
Mounting:	4x35 mm or 4x55 mm screws
Connection from:	
EFL3(C) lock	RJ10
Connection to:	
FT120 unit	Molex 87833-042
Contact Rating:	24V, 1A max.
Temperature range:	0 °C - 50 °C (32 °F - 122 °F)



69-FT120-MLA8

(Multi-Lock Adapter)

Features:

- Modular connection for EFL3 with cable.
- AMP plug-in ready to connect EFL1, EFL6(C), EFL10(C), even in combination with EFL3(C).
- Status of the EFL3 monitor contacts available for third party applications; no particular wiring is required.
- Relay box can be connected.
- LED indicator on each output ideal for functional test and troubleshooting.
- One step assignment of keyed alike keys also for a large number of locks.

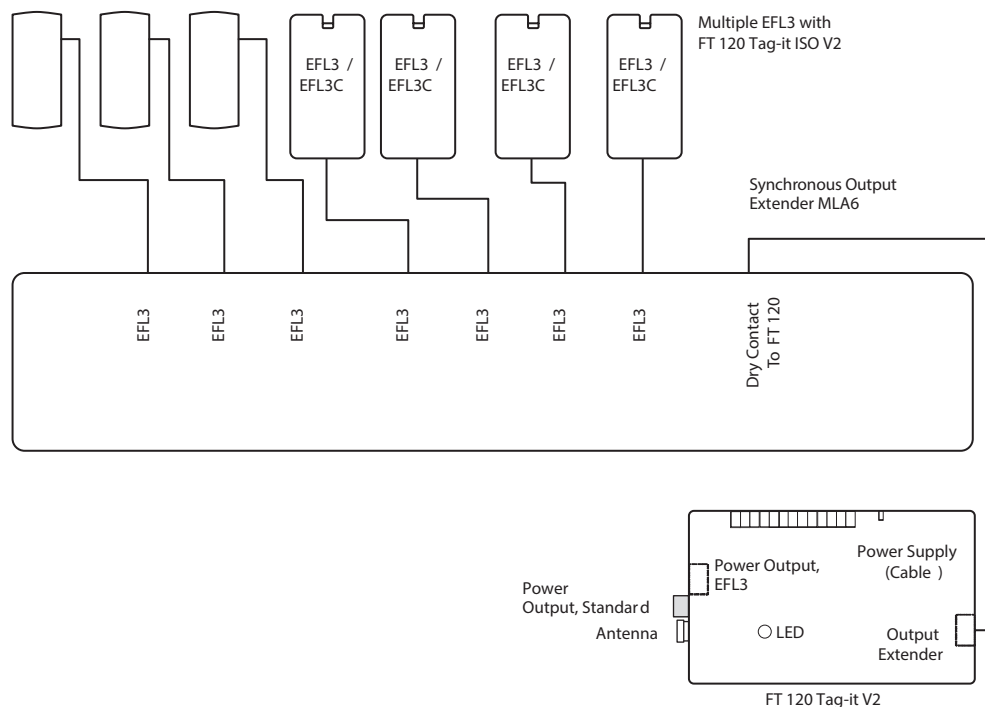
Supplied with:

- (1x) multi-lock adapter
- Mounting block
- 0.5 m (1.64') cable
- Instructions



Specifications:

Housing dimensions:	280 x 50 x 25.2 mm (11-1/32" x 2" x 1")
Mounting:	4x35 mm or 4x55 mm screws
Supply voltage:	9.6 - 14.4 VDC
Connection from:	EFL3(C) lock
Connection to:	FT120 unit
Input jack EFL(X):	RJ11
Contact Rating:	AMP Mate-N-Loc, Female 24V, 1A max.
Temperature range:	0 °C - 50 °C (32 °F - 122 °F)



69-TRN-12VDC-2.5A

(Power Supply)

Features:

- Protected from damage if the output wiring is shorted.

Supplied with:

- (1x) power supply
- AMP socket and 72" primary cord

Specifications:

Housing dimensions:	108 x 58 x 30 mm (4-1/4" x 2-9/32" x 1-3/16")
AC input voltage:	120 V \pm 15%, 47 - 63 HZ
AC input current:	0.6 A
DC voltage output:	12 VDC \pm 5%
Output current range:	0 - 2.5 A
Operating temp. range:	0 °C - 40 °C (32 °F - 140 °F)
Capacity:	max. 50 EFL1 locks

Note:

Powered switches reduce lock capacity. The in-line power supplies are not provided with mounting tabs. They are best placed on a protected shelf or trough.

Alternate central power options for large projects in battery back-up power supplies.



69-PWR-CORD

Power cord

- Required to supply DC voltage to the controller when using power supply (69-TRN-12VDC-2.5A)
- Length: 500 mm (19-5/8").



69-EXT-RLY

External relay unit

- Use in conjunction with FT120 to control MCL1 mag units.



Cables for EFL3(C)

69-EFL3-CBL-1M (1 m / 39-3/8")

69-EFL3-CBL-3M (3 m / 118")

69-EFL3-CBL-5M (5 m / 196-3/4")



Extension Cables

- Used between components on the secondary side (low-voltage side) to the Power Supply.
- 5 and 10 meter extension cables are only for use with locking systems.

69-EXT-CBL-1M (1 m / 39-3/8")

69-EXT-CBL-2M (2 m / 78-3/4")

69-EXT-CBL-5M (5 m / 196-3/4")

69-EXT-CBL-10M (10 m / 393-3/4")



69-DIST-2

Distribution Block 1:2

- Acts as a splitter, allowing 2 output devices to be connected to one input device.
- One male plug wired to 2 female caps, allowing up to 2 EFL locks to be connected to 1 output.
- Additional connectors can be made allowing other locks to be added.
- This process can be repeated as long as the current ratings for the system are not exceeded.



69-DIST-6

Distribution Block 1:6

- Allows up to 6 locks to be connected to one output.
- One male plug wired to 6 female caps.
- For additional locks, a second block can be plugged into one of the caps of the first block (adding 5 locks).
- This process can be repeated as long as the current ratings system, the power supply, and control device (switch) are not exceeded.



EFL Systems Dialoglock® RFID Keys Tag-it™

Features:

- Contactless data transmission.
- Read/write transponder.
- No batteries required.
- Insensitive to magnetism, mechanical vibrations, humidity, moisture, & dust.
- Reuseable.
- Forgery proof.

Key Fobs

- Solid and impact resistant polycarbonate, ultrasound welded and made waterproof.
- Stainless steel frame.
- 4 Dialoglock® segments.
- Diameter: $\varnothing 36$ mm ($\varnothing 1\frac{7}{16}$ ")
- Height: 7.2 mm ($\frac{9}{32}$ ")

69-FOB-TAG-BL

69-FOB-TAG-WH

69-FOB-TAG-TL

69-FOB-TAG-RD

69-FOB-TAG-BE

69-FOB-TAG-OR



Key Tags

- Water-resistant.
- 4 Dialoglock® segments.
- WxHxD: 28 x 56 x 1.7 mm ($\frac{5}{8}$ " x $2\frac{1}{4}$ " x $\frac{1}{16}$ ")

69-KEY-TAG-GRY-USER

69-KEY-TAG-WH-USER



- Level 1 programming Add (green) and Delete (red) RFID key tags.

69-KEY-TAG-GRN-ADD

69-KEY-TAG-RD-DEL



Medeco Removable Core

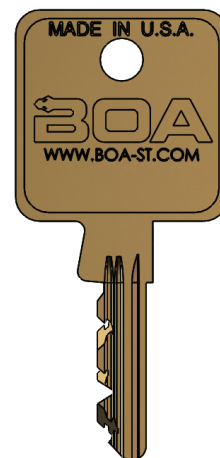
Medeco® Locks are also available with a removable core feature. This feature allows cores to be changed out in seconds, to provide an entirely new keying combination. For applications that may require instantaneous re-keying due to lost or stolen keys, or where periodic re-keying is done as a matter of good business practice, Medeco® Removable Core Cylinders save valuable time and money. Removable Core Locks offer the same high security features of a Medeco® Traditional Fixed Core Lock with the convenience of a removable core.

Features:

- Removable Core locks offer the security and convenience of removable core in the smaller footprint of a standard $\frac{3}{4}$ " diameter cam lock.
- 1000's of high-security precision cut key combinations.
- Biaxial locks feature pick resistant offset chisel-pointed pins.
- Available restricted keyways and high level of key control. Additional keys will only be released with an authorized signature.

Mechanical Specifications:

- Special "control" key removes the cam lock plug for fast and secure combination change / rekey
- Operating key operates the lock without removing the core
- Machined brass plug with hardened inserts
- Machined brass outer shell
- Keyed alike or keyed different
- Master keyed with other style products
- Key retaining or multiple key pulls
- Clockwise or counterclockwise rotation
- Special finishes available. Call for details, lead time and pricing.



Part Number

K - CL-3 - **R** - **P** - **KO**
M - **F** - **C**

KEYWAY **K**

- 03** – Medeco® m³
- 04** – Medeco® CA
- 07** – BOA Restricted

ROTATION **R**

- 90** – 90° Right
- 180** – 180° Right
(Call for info on Left-hand rotation)

KEY PULLS **P**

- C** – Captive Key Retaining
(90° Rotation Only)
- N** – Non-Captive 2 Key Pulls
(180° Rotation Only)

KEYED OPTION **KO**

- A** – Keyed Alike
- D** – Keyed Different

MASTER **M**

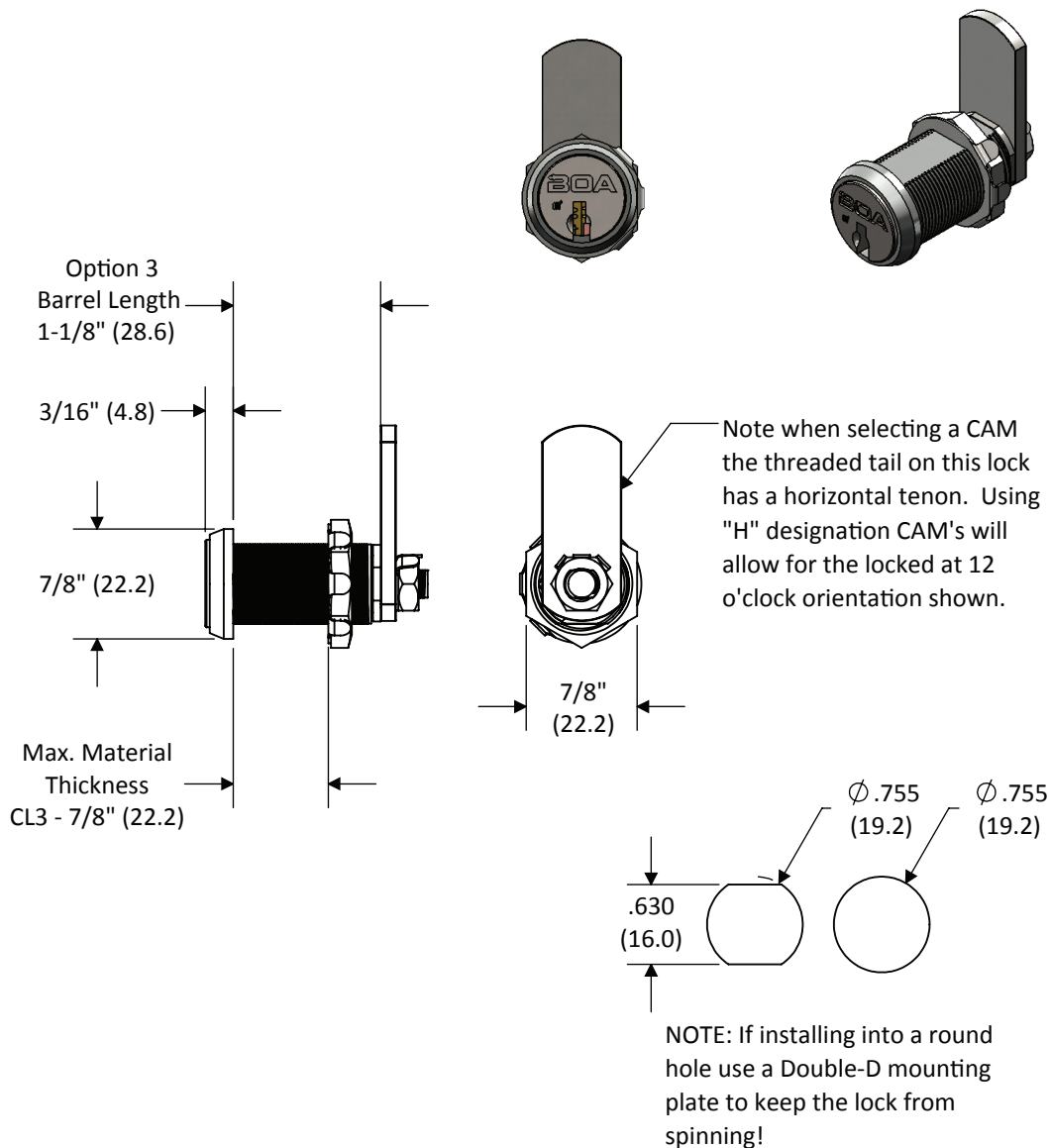
- N** – Non-Master
- M** – Single Level Master

FINISH **F**

- PN** – Polished Nickel
- SC** – Satin Chrome (US26D)
- CF** – Custom Finish (See Finish Page)

CAM **C**

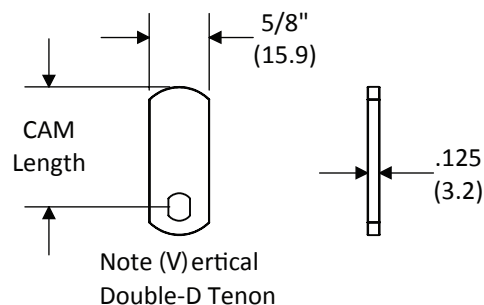
See CAM Page for options



Package includes parts for 90° and 180° rotation.

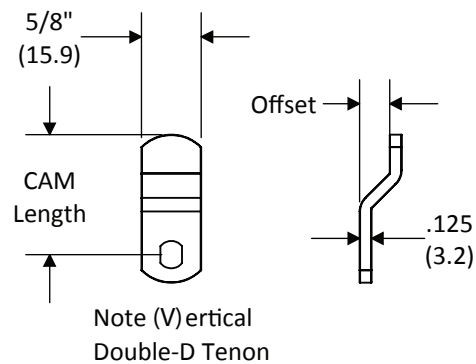
All dimensions are nominal. For best fit call for a sample.
Dual-Dimensions in parentheses are in millimeter (mm).

Straight Flat CAM	
Part #	CAM Length
00-CAM-0750	0.750" (19.1 mm)
00-CAM-1250	1.250" (31.8 mm)
00-CAM-1750	1.750" (44.5mm)
00-CAM-2000	2.000" (50.8 mm)



Offset CAM		
Part #	CAM Length	Offset
00-CAM-1250X0313	1.250" (31.8 mm)	0.3125" (7.9 mm)
00-CAM-2000X0313	2.000" (50.8 mm)	0.3125" (7.9 mm)

Note: All CAMs are sold as a set or 2 CAMs containing both Vertical and Horizontal Tenons.



**Custom sizes available.
Call for quote and details.**

All dimensions are nominal. For best fit call for a sample.
Dual-Dimensions in parentheses are in millimeter (mm).

Medeco Removable Core Dead Bolt Drawer Lock

Part Number

K -DB-L- **B** - **P** - **KO**

M - **F**

KEYWAY **K**

03 – Medeco® m³

04 – Medeco® CA

07 – BOA Restricted

BOLT TYPE **B**

BS – 1-1/16" (27.0 mm)

BL – 1-11/16" (42.9 mm)

BLX – 3-1/8" (79.4 mm)

OS – 3/8" (9.5 mm) Offset Bolt

KEY PULLS **P**

C – Captive Key Retaining
(90° Rotation Only)

N – Non-Captive 2 Key Pulls
(180° Rotation Only)

KEYED OPTION **KO**

A – Keyed Alike

D – Keyed Different

MASTER **M**

N – Non-Master

M – Single Level Master

FINISH **F**

PN - Polished Nickel

SC - Satin Chrome (US26D)

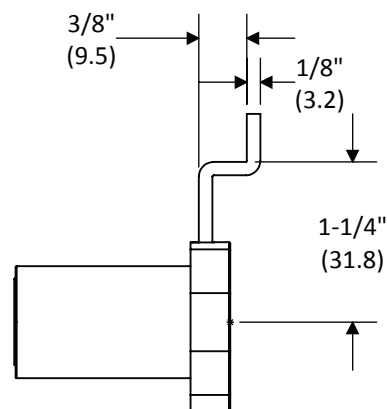
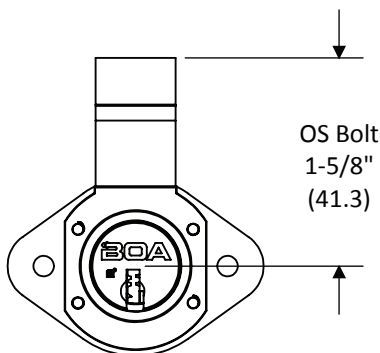
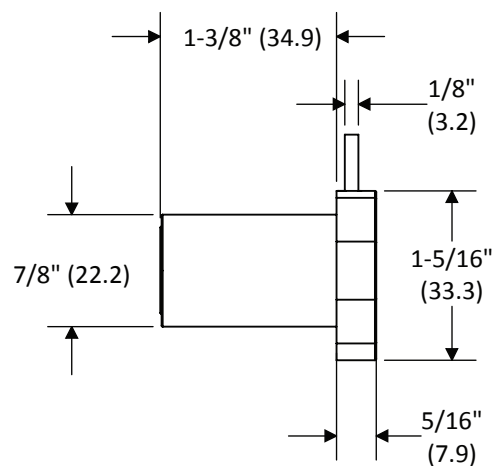
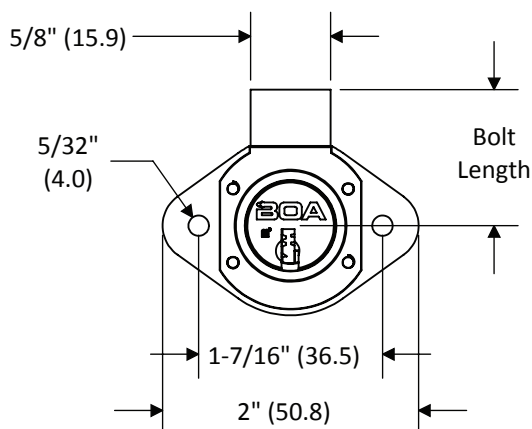
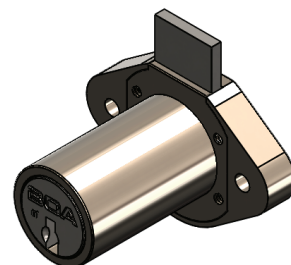
CF - Custom Finish (See Finish
Page)

NOTE:

Products pictured in the locked position

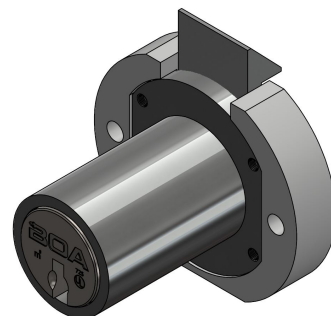
Nominal Bolt travel is 7/16" (11.1 mm)

Short bolt (BS) option retracts completely into housing.



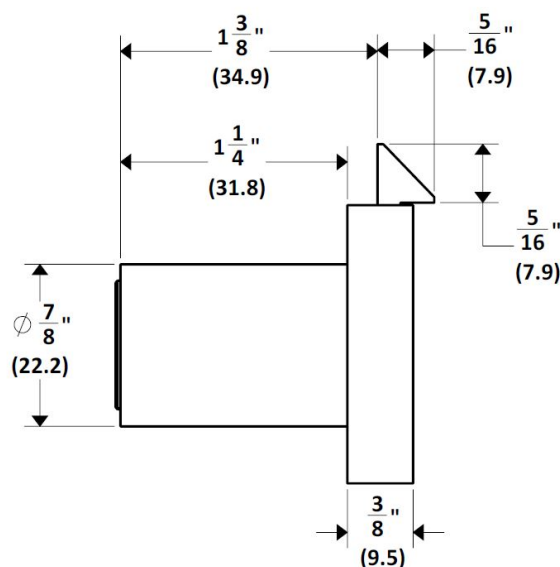
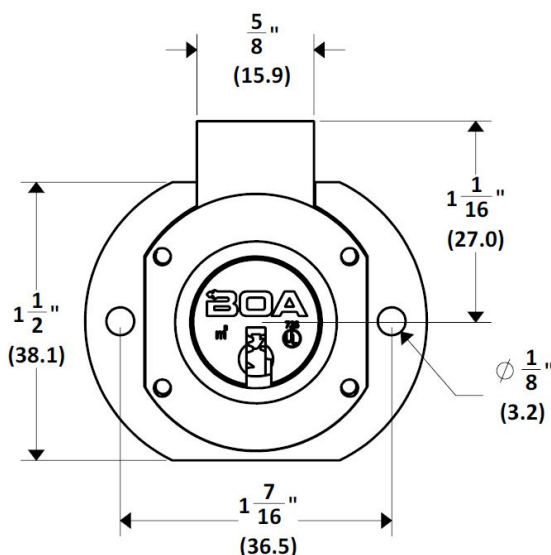
All dimensions are nominal. For best fit call for a sample.
Dual-Dimensions in parentheses are in millimeter (mm).

Medeco Removable Core Spring Bolt Drawer Lock



NOTE:

Products pictured in the locked position
Nominal Bolt travel is 11/32" (8.7 mm)



Part Number

K - L - **B** - C - **KO** -
M - **F**

KEYWAY **K**

03 - Medeco® m³

04 - Medeco® CA

07 - BOA Restricted

BOLT TYPE **B**

BS - 1-1/16" (27.0mm)

KEYED OPTION **KO**

A - Keyed Alike

D - Keyed Different

MASTER **M**

N - Non-Master

M - Single Level Master

FINISH **F**

PN - Polished Nickel

SC - Satin Chrome (US26D)

CF - Custom Finish (See Finish Page)

All dimensions are nominal. For best fit call for a sample.
Dual-Dimensions in parentheses are in millimeter (mm).

Medeco Removable Core Dead Bolt "BULLDOG" Drawer Lock*

*Patent Pending

Part Number

K -BD-L- **B** - **P** - **KO**

M - **F**

KEYWAY **K**

03 – Medeco® m³

04 – Medeco® CA

07 – BOA Restricted

BOLT TYPE **B**

BS – 1-1/16" (27.0 mm)

BL – 1-11/16" (42.9 mm)

BSB – 1-1/16" (27.0 mm)
with Rubber Bumper

BLB – 1-11/16" (42.9 mm)
with Rubber Bumper

KEY PULLS **P**

C – Captive Key Retaining
(90° Rotation Only)

N – Non-Captive 2 Key Pulls
(180° Rotation Only)

KEYED OPTION **KO**

A – Keyed Alike

D – Keyed Different

MASTER **M**

N – Non-Master

M – Single Level Master

FINISH **F**

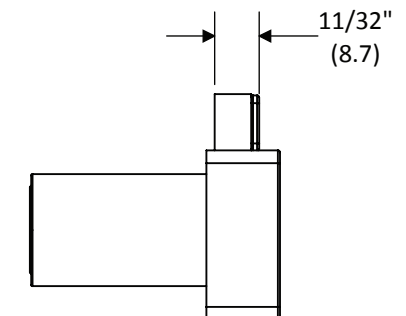
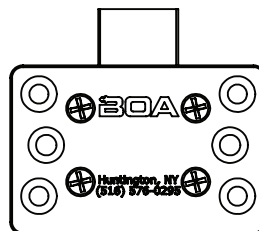
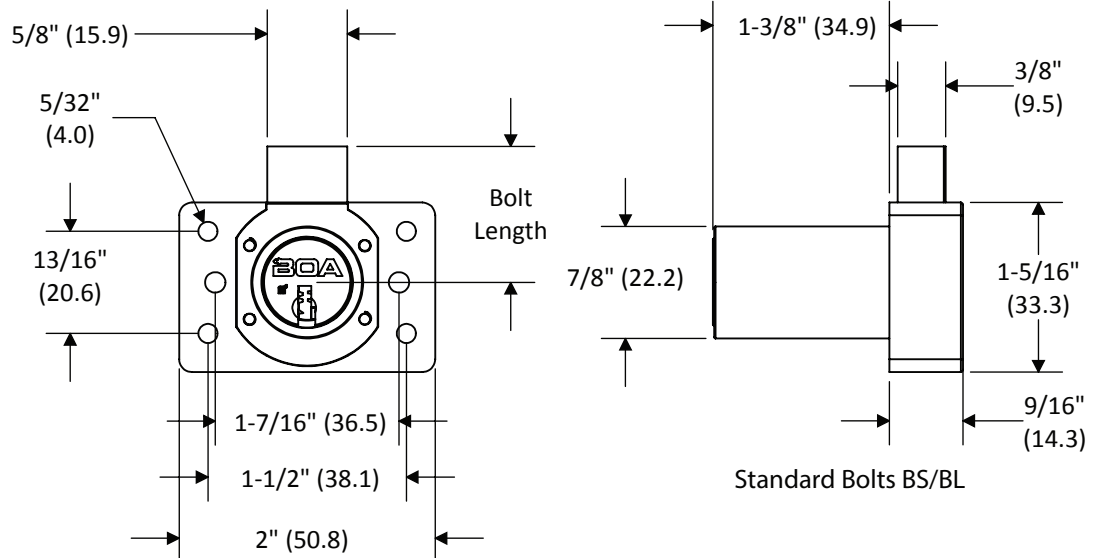
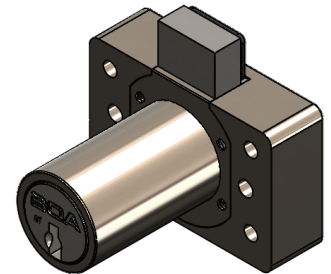
PN - Polished Nickel

SC - Satin Chrome (US26D)

CF - Custom Finish (See Finish Page)

NOTE:

Products pictured in the locked position
Nominal Bolt travel is 7/16" (11.1 mm)
Short bolt (BS & BSB) options retract
completely into housing.



Rubber Bumper Bolts BSB/BLB

All dimensions are nominal. For best fit call for a sample.
Dual-Dimensions in parentheses are in millimeter (mm).

Medeco Removable Core Snap Bolt Drawer Lock

Part Number

K -SB-L- **O** -N- **KO** -
M - **F**

KEYWAY **K**

- 03** – Medeco® m³
- 04** – Medeco® CA
- 07** – BOA Restricted

ORIENTATION **O**

- VI** – Vertical or Inverted
- LR** – Left or Right

KEYED OPTION **KO**

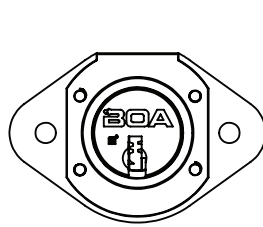
- A** – Keyed Alike
- D** – Keyed Different

MASTER **M**

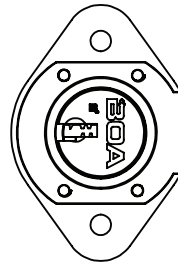
- N** – Non-Master
- M** – Single Level Master

FINISH **F**

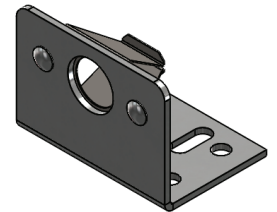
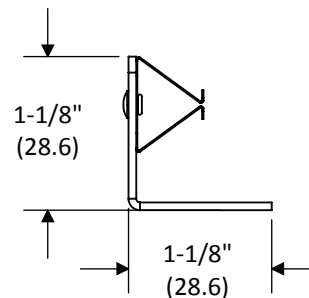
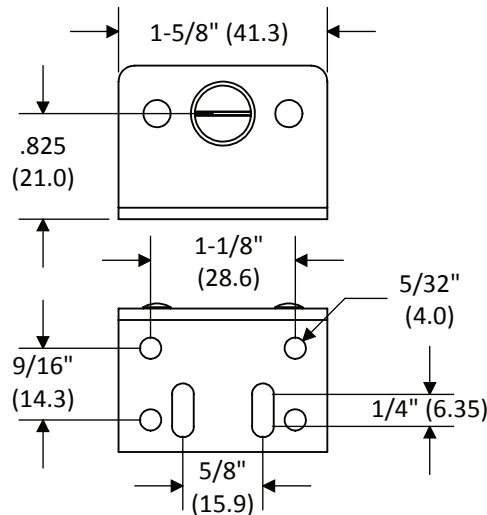
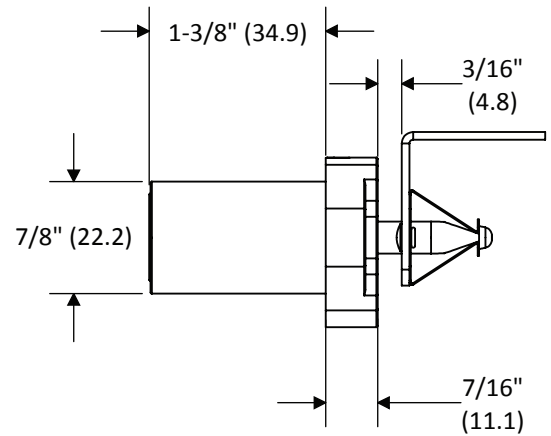
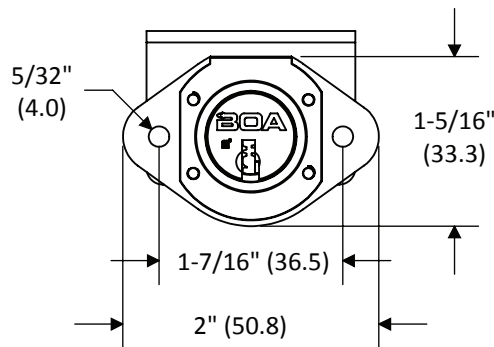
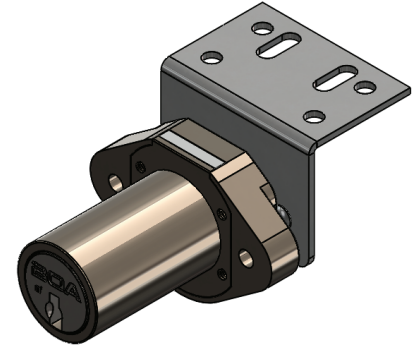
- PN** – Polished Nickel
- SC** – Satin Chrome (US26D)
- CF** – Custom Finish (See Finish Page)



"VI" Orientation



"LR" Orientation



All dimensions are nominal. For best fit call for a sample.
Dual-Dimensions in parentheses are in millimeter (mm).

Medeco Removable Core Keys & Cores

Part Number

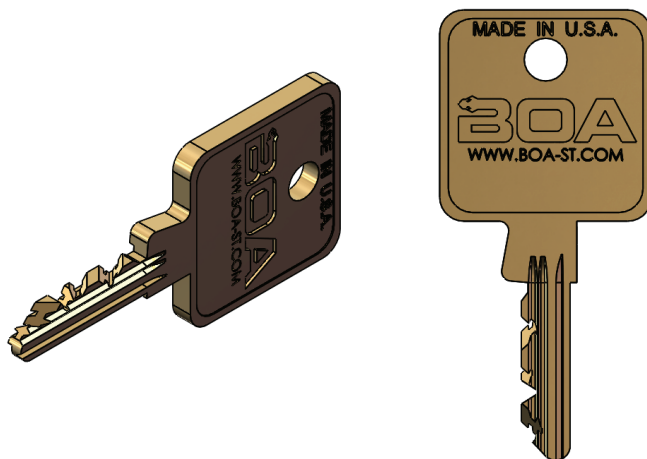
K -KEY- **FN**

KEYWAY **K**

- 03** – Medeco® m³
- 04** – Medeco® CA
- 07** – BOA Restricted

FUNCTION **FN**

- OP** – Operating
- CTL** – Control
- M** – Single Level Master



BOA Security Technologies offers Medeco® Biaxial and Medeco3® key technology. Restricted keyways are available which offer another layer of protection.

All Medeco® keys purchased through BOA must be registered with an authorized identification and signature on file. Additional keys can only be purchased with this authorization credential.

Note removable core operating keys are 5-pin and the control key is 4-pin. Removable core products can not be mixed with standard Medeco products.

K -CORE- **KO** - **M** - **F**

KEYWAY **K**

- 03** – Medeco® m³
- 04** – Medeco® CA
- 07** – BOA Restricted

KEYED OPTION **KO**

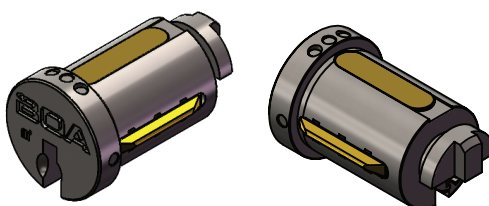
- A** – Keyed Alike
- D** – Keyed Different

MASTER **M**

- N** – Non-Master
- M** – Single Level Master

FINISH **F**

- BC** – Brushed Chrome (Standard)
- CF** – Custom Finish (See Finish Page)



Medeco Removable Core

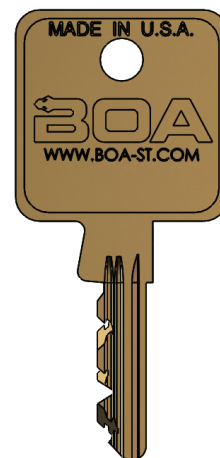
Medeco® Locks are also available with a removable core feature. This feature allows cores to be changed out in seconds, to provide an entirely new keying combination. For applications that may require instantaneous re-keying due to lost or stolen keys, or where periodic re-keying is done as a matter of good business practice, Medeco® Removable Core Cylinders save valuable time and money. Removable Core Locks offer the same high security features of a Medeco® Traditional Fixed Core Lock with the convenience of a removable core.

Features:

- Removable Core locks offer the security and convenience of removable core in the smaller footprint of a standard ¾" diameter cam lock.
- 1000's of high-security precision cut key combinations.
- Biaxial locks feature pick resistant offset chisel-pointed pins.
- Available restricted keyways and high level of key control. Additional keys will only be released with an authorized signature.

Mechanical Specifications:

- Special "control" key removes the cam lock plug for fast and secure combination change / rekey
- Operating key operates the lock without removing the core
- Machined brass plug with hardened inserts
- Machined brass outer shell
- Keyed alike or keyed different
- Master keyed with other style products
- Key retaining or multiple key pulls
- Clockwise or counterclockwise rotation
- Special finishes available. Call for details, lead time and pricing.



Part Number

K - CL-3 - **R** - **P** - **KO**
M - **F** - **C**

KEYWAY **K**

- 03** – Medeco® m³
- 04** – Medeco® CA
- 07** – BOA Restricted

ROTATION **R**

- 90** – 90° Right
- 180** – 180° Right
(Call for info on Left-hand rotation)

KEY PULLS **P**

- C** – Captive Key Retaining
(90° Rotation Only)
- N** – Non-Captive 2 Key Pulls
(180° Rotation Only)

KEYED OPTION **KO**

- A** – Keyed Alike
- D** – Keyed Different

MASTER **M**

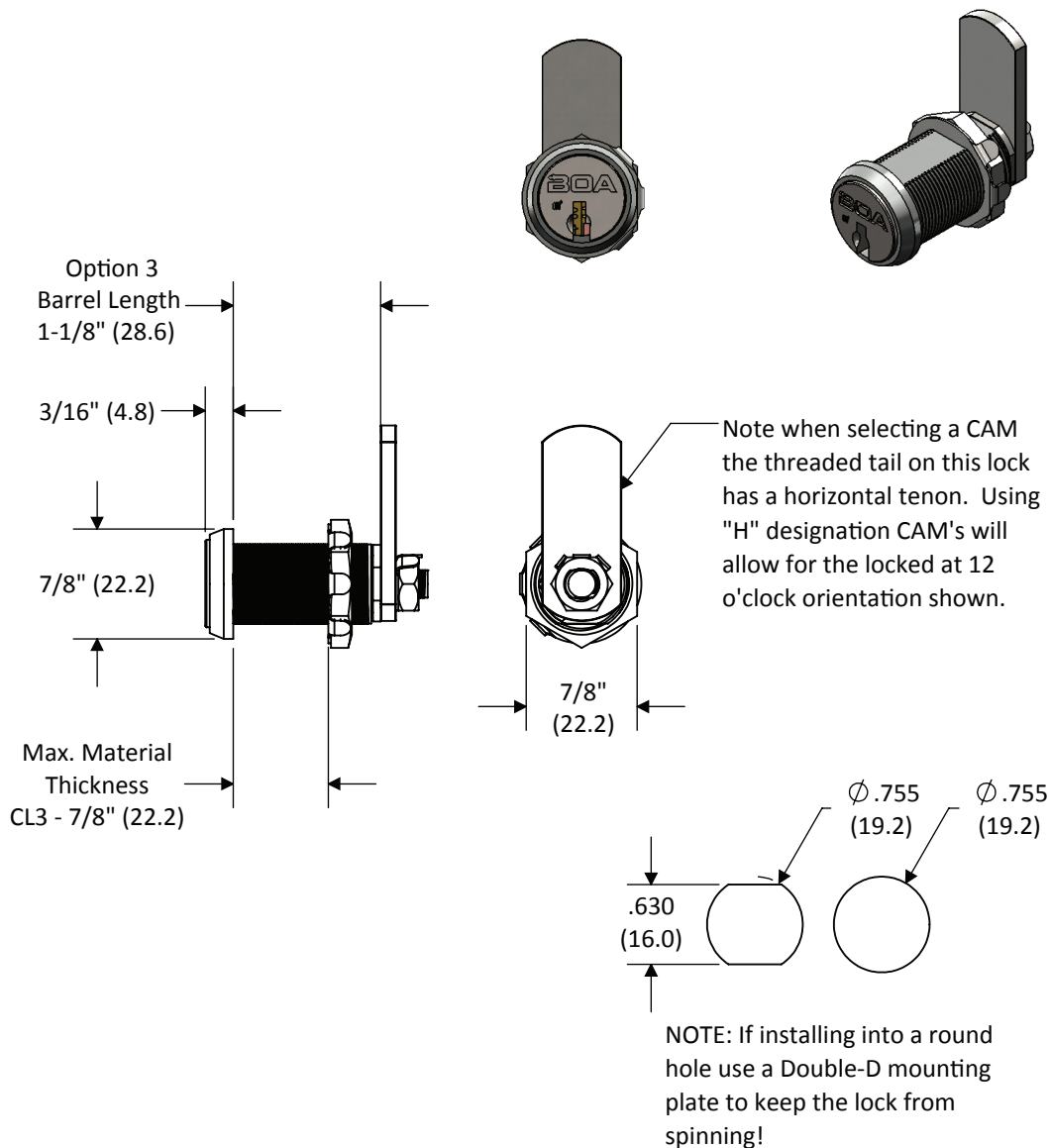
- N** – Non-Master
- M** – Single Level Master

FINISH **F**

- PN** – Polished Nickel
- SC** – Satin Chrome (US26D)
- CF** – Custom Finish (See Finish Page)

CAM **C**

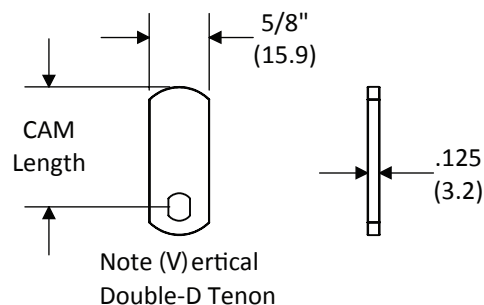
See CAM Page for options



Package includes parts for 90° and 180° rotation.

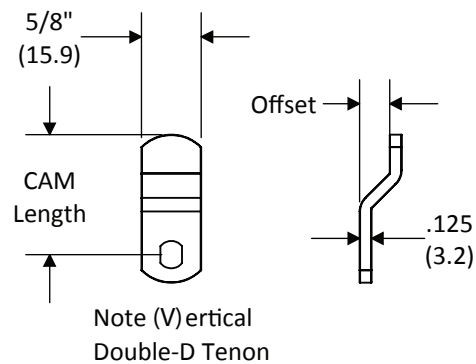
All dimensions are nominal. For best fit call for a sample.
Dual-Dimensions in parentheses are in millimeter (mm).

Straight Flat CAM	
Part #	CAM Length
00-CAM-0750	0.750" (19.1 mm)
00-CAM-1250	1.250" (31.8 mm)
00-CAM-1750	1.750" (44.5mm)
00-CAM-2000	2.000" (50.8 mm)



Offset CAM		
Part #	CAM Length	Offset
00-CAM-1250X0313	1.250" (31.8 mm)	0.3125" (7.9 mm)
00-CAM-2000X0313	2.000" (50.8 mm)	0.3125" (7.9 mm)

Note: All CAMs are sold as a set or 2 CAMs containing both Vertical and Horizontal Tenons.



**Custom sizes available.
Call for quote and details.**

All dimensions are nominal. For best fit call for a sample.
Dual-Dimensions in parentheses are in millimeter (mm).

Medeco Removable Core Dead Bolt Drawer Lock

Part Number

K -DB-L- **B** - **P** - **KO**

M - **F**

KEYWAY **K**

03 – Medeco® m³

04 – Medeco® CA

07 – BOA Restricted

BOLT TYPE **B**

BS – 1-1/16" (27.0 mm)

BL – 1-11/16" (42.9 mm)

BSL – 3-1/8" (79.4 mm)

OS – 3/8" (9.5 mm) Offset Bolt

KEY PULLS **P**

C – Captive Key Retaining
(90° Rotation Only)

N – Non-Captive 2 Key Pulls
(180° Rotation Only)

KEYED OPTION **KO**

A – Keyed Alike

D – Keyed Different

MASTER **M**

N – Non-Master

M – Single Level Master

FINISH **F**

PN - Polished Nickel

SC - Satin Chrome (US26D)

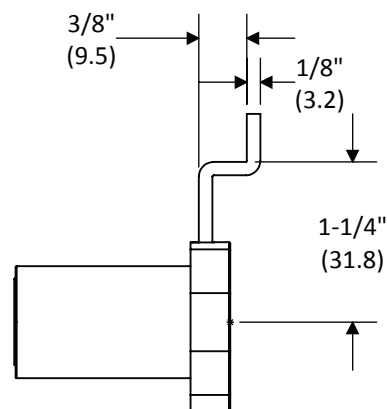
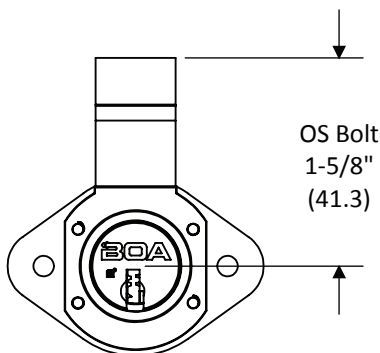
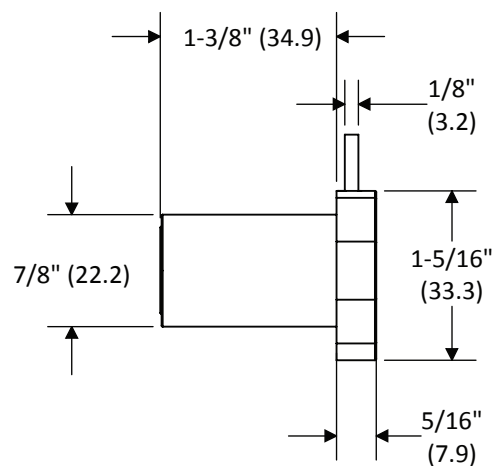
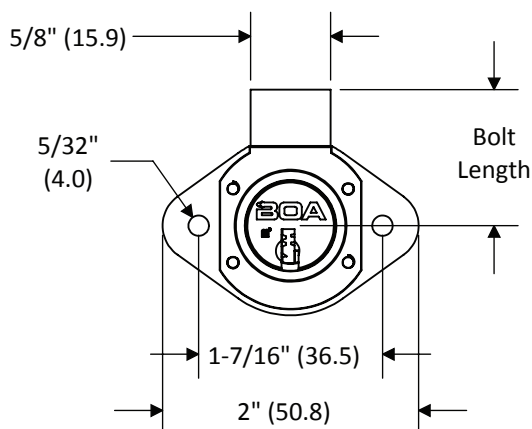
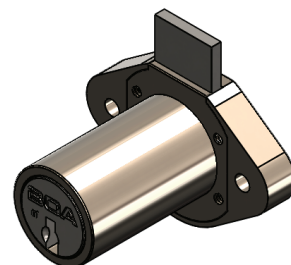
CF - Custom Finish (See Finish
Page)

NOTE:

Products pictured in the locked position

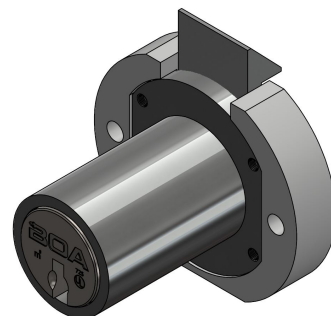
Nominal Bolt travel is 7/16" (11.1 mm)

Short bolt (BS) option retracts completely into housing.



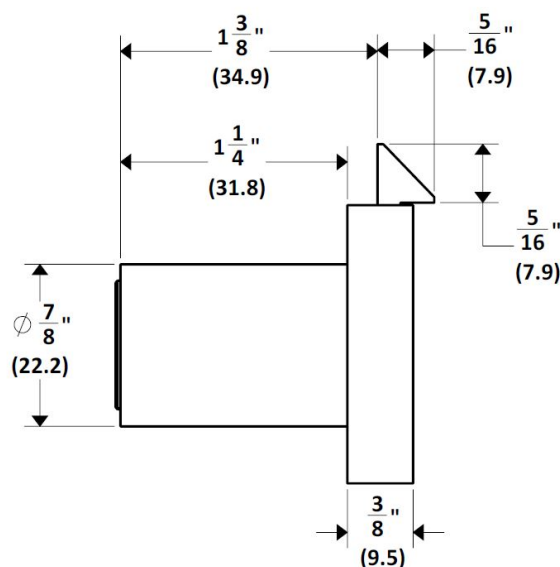
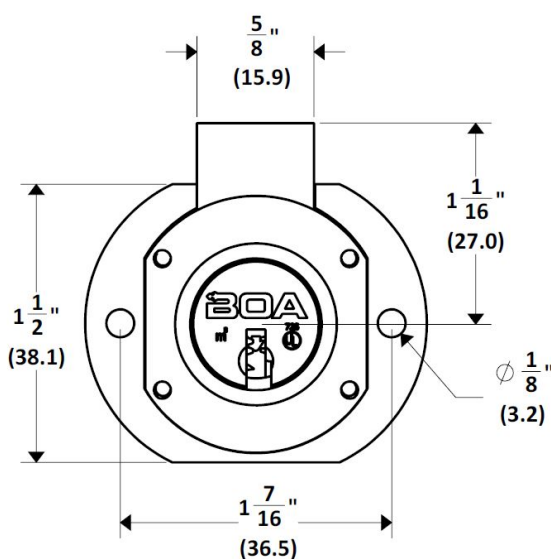
All dimensions are nominal. For best fit call for a sample.
Dual-Dimensions in parentheses are in millimeter (mm).

Medeco Removable Core Spring Bolt Drawer Lock



NOTE:

Products pictured in the locked position
Nominal Bolt travel is 11/32" (8.7 mm)



Part Number

K - L - **B** - C - **KO** -
M - **F**

KEYWAY **K**

- 03** – Medeco® m³
- 04** – Medeco® CA
- 07** – BOA Restricted

BOLT TYPE **B**

- BS** – 1-1/16" (27.0mm)

KEYED OPTION **KO**

- A** – Keyed Alike
- D** – Keyed Different

MASTER **M**

- N** – Non-Master
- M** – Single Level Master

FINISH **F**

- PN** – Polished Nickel
- SC** – Satin Chrome (US26D)
- CF** – Custom Finish (See Finish Page)

All dimensions are nominal. For best fit call for a sample.
Dual-Dimensions in parentheses are in millimeter (mm).

Medeco Removable Core Dead Bolt "BULLDOG" Drawer Lock*

*Patent Pending

Part Number

K - BD - L - **B** - **P** - **KO**
M - **F**

KEYWAY **K**

- 03** – Medeco® m³
- 04** – Medeco® CA
- 07** – BOA Restricted

BOLT TYPE **B**

- BS** – 1-1/16" (27.0 mm)
- BL** – 1-11/16" (42.9 mm)
- BSB** – 1-1/16" (27.0 mm)
with Rubber Bumper
- BLB** – 1-11/16" (42.9 mm)
with Rubber Bumper

KEY PULLS **P**

- C** – Captive Key Retaining
(90° Rotation Only)
- N** – Non-Captive 2 Key Pulls
(180° Rotation Only)

KEYED OPTION **KO**

- A** – Keyed Alike
- D** – Keyed Different

MASTER **M**

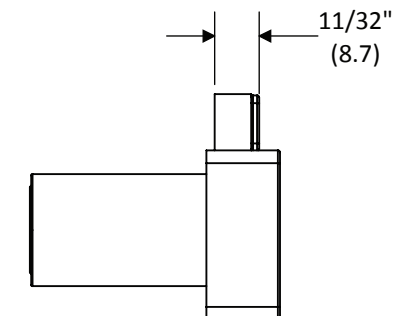
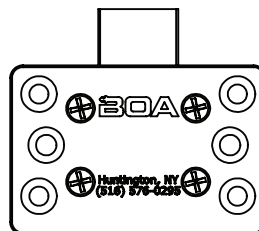
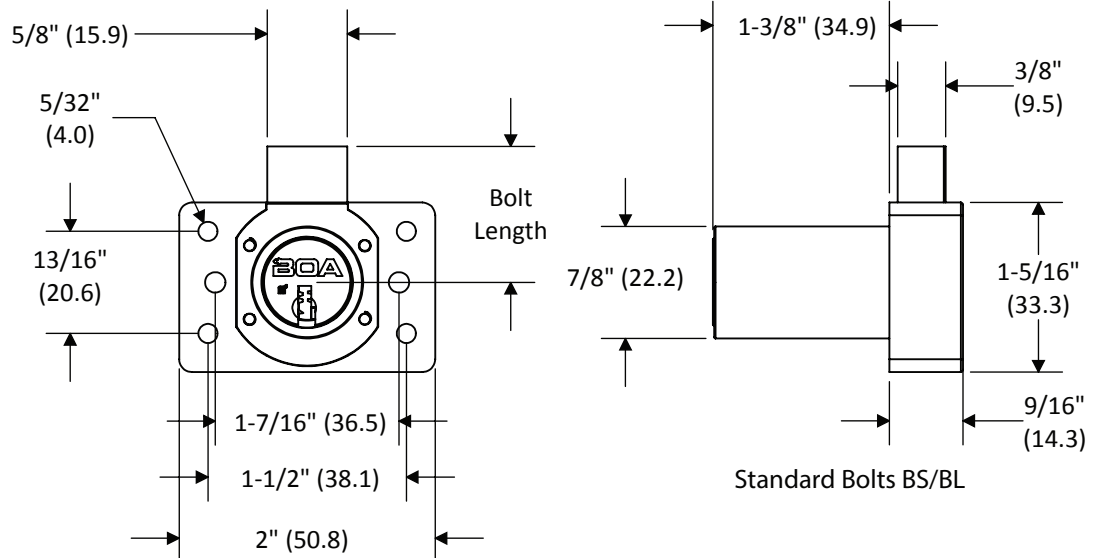
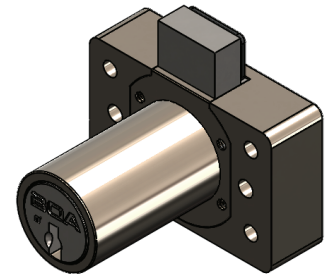
- N** – Non-Master
- M** – Single Level Master

FINISH **F**

- PN** - Polished Nickel
- SC** - Satin Chrome (US26D)
- CF** - Custom Finish (See Finish Page)

NOTE:

Products pictured in the locked position
Nominal Bolt travel is 7/16" (11.1 mm)
Short bolt (BS & BSB) options retract
completely into housing.



Rubber Bumper Bolts BSB/BLB

All dimensions are nominal. For best fit call for a sample.
Dual-Dimensions in parentheses are in millimeter (mm).

Medeco Removable Core Snap Bolt Drawer Lock

Part Number

K -SB-L- **O** -N- **KO** -
M - **F**

KEYWAY **K**

- 03** – Medeco® m³
- 04** – Medeco® CA
- 07** – BOA Restricted

ORIENTATION **O**

- VI** – Vertical or Inverted
- LR** – Left or Right

KEYED OPTION **KO**

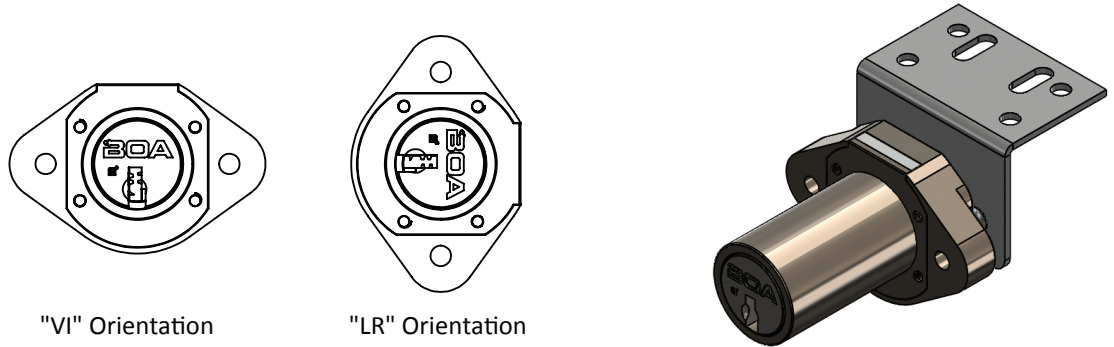
- A** – Keyed Alike
- D** – Keyed Different

MASTER **M**

- N** – Non-Master
- M** – Single Level Master

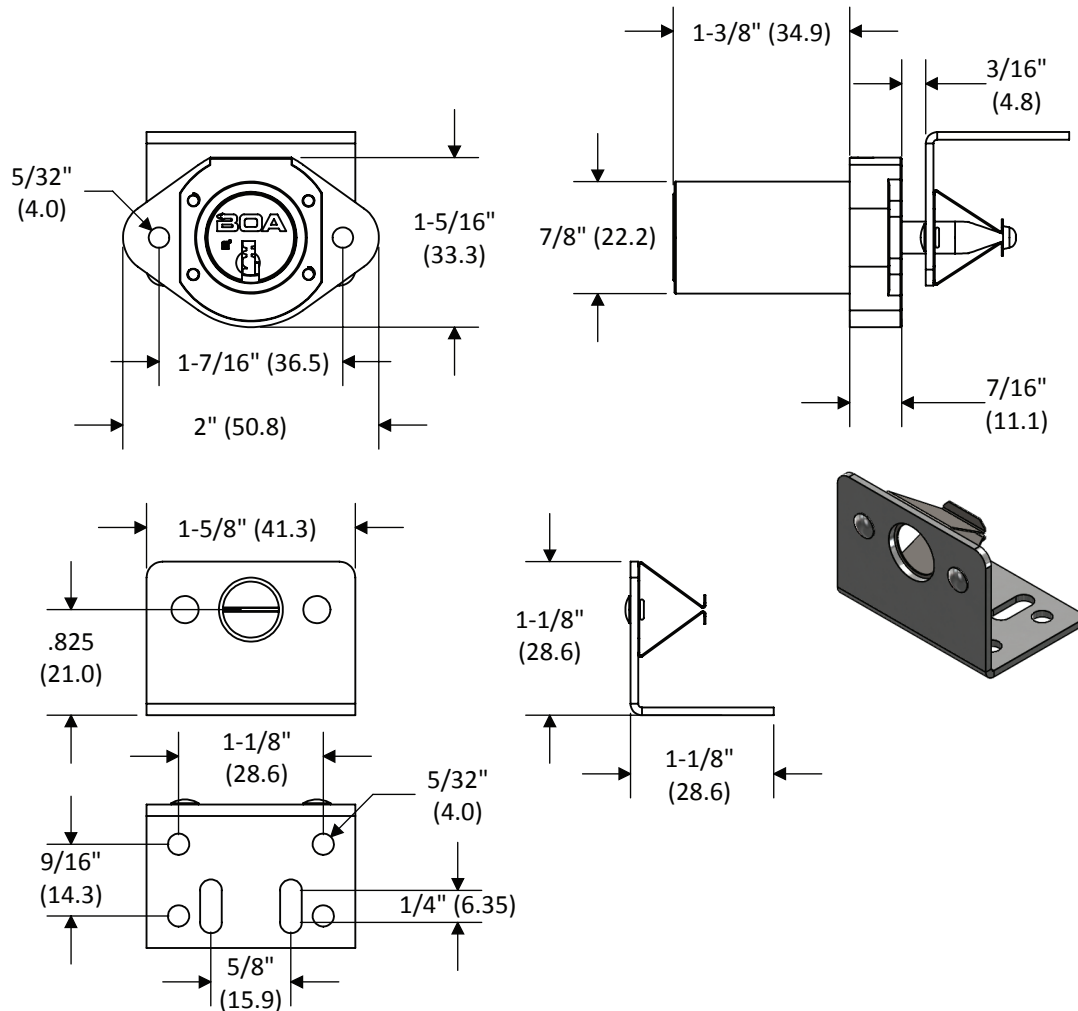
FINISH **F**

- PN** – Polished Nickel
- SC** – Satin Chrome (US26D)
- CF** – Custom Finish (See Finish Page)



"VI" Orientation

"LR" Orientation



All dimensions are nominal. For best fit call for a sample.
Dual-Dimensions in parentheses are in millimeter (mm).

Medeco Removable Core Keys & Cores

Part Number

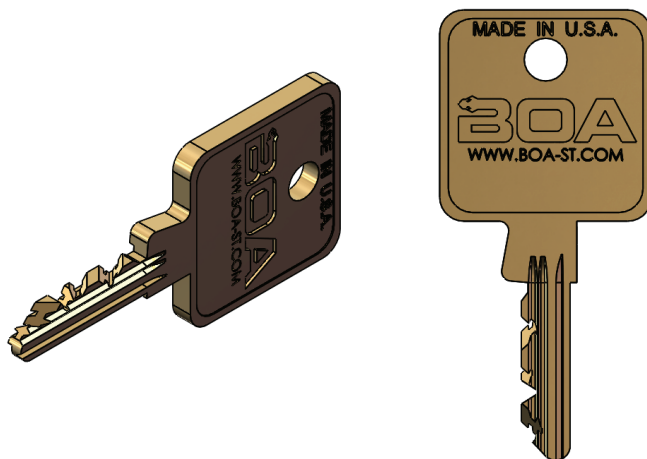
K -KEY- **FN**

KEYWAY **K**

- 03** – Medeco® m³
- 04** – Medeco® CA
- 07** – BOA Restricted

FUNCTION **FN**

- OP** – Operating
- CTL** – Control
- M** – Single Level Master



BOA Security Technologies offers Medeco® Biaxial and Medeco3® key technology. Restricted keyways are available which offer another layer of protection.

All Medeco® keys purchased through BOA must be registered with an authorized identification and signature on file. Additional keys can only be purchased with this authorization credential.

Note removable core operating keys are 5-pin and the control key is 4-pin. Removable core products can not be mixed with standard Medeco products.

K -CORE- **KO** - **M** - **F**

KEYWAY **K**

- 03** – Medeco® m³
- 04** – Medeco® CA
- 07** – BOA Restricted

KEYED OPTION **KO**

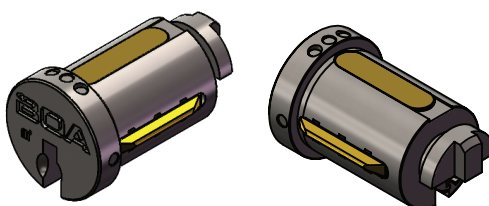
- A** – Keyed Alike
- D** – Keyed Different

MASTER **M**

- N** – Non-Master
- M** – Single Level Master

FINISH **F**

- BC** – Brushed Chrome (Standard)
- CF** – Custom Finish (See Finish Page)



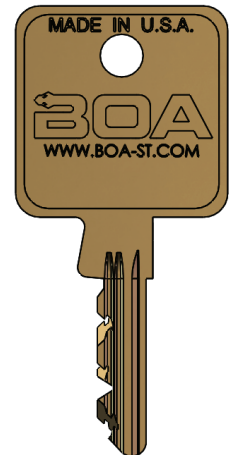
Medeco® high security cylinders are well recognized throughout the world as the standard for high security in a wide variety of applications. Medeco mechanical locks feature unique cylinder designs that provide unmatched security and flexibility. Medeco locks by BOA Security Technologies are available in a wide variety of standard sizes and functions, along with custom products to meet your specific needs. Locks can be keyed different, keyed alike, or master keyed.

Features:

- Medeco High Security UL Listed locks feature hardened inserts for the best protection against physical attack.
- 1000's of high-security precision cut key combinations.
- Biaxial locks feature pick resistant offset chisel-pointed pins.
- Available restricted keyways and high level of key control. Additional keys will only be released with an authorized signature.

Mechanical Specifications:

- UL437 Listed
- Machined brass plug with hardened inserts
- Machined brass outer shell
- Keyed alike or keyed different
- Master keyed with other style products
- Key retaining or multiple key pulls
- Clockwise or counterclockwise rotation
- Special finishes available. Call for details, lead time, and price.



Part Number

K - CL - BL - R - P -
KO - M - F - C

KEYWAY **K**

- 01** – Medeco® m³
- 02** – Medeco® CA
- 06** – BOA Restricted

BARREL LENGTH **BL**

- 2** – 7/8" (22.2mm)
- 3** – 1-1/8" (28.6mm)
- 4** – 2" (50.8mm)

ROTATION **R**

- 90** – 90° Right
- 180** – 180° Right
(Call for info on Left-hand rotation)

KEY PULLS **P**

- C** – Captive Key Retaining
(90° Rotation Only)
- N** – Non-Captive 2 Key Pulls
(180° Rotation Only)

KEYED OPTION **KO**

- A** – Keyed Alike
- D** – Keyed Different

MASTER **M**

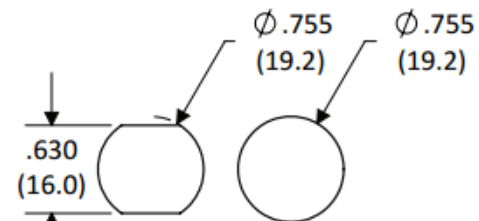
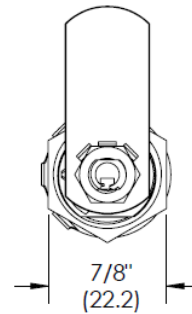
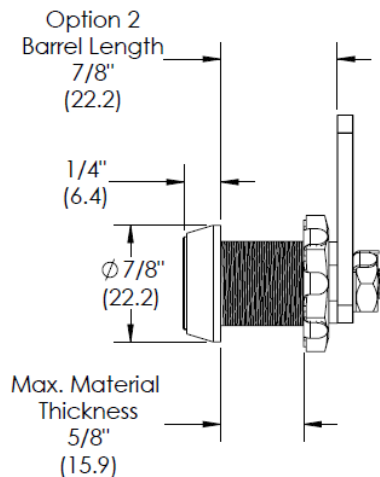
- N** – Non-Master
- M** – Single Level Master

FINISH **F**

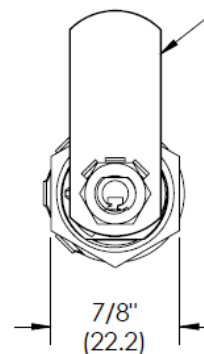
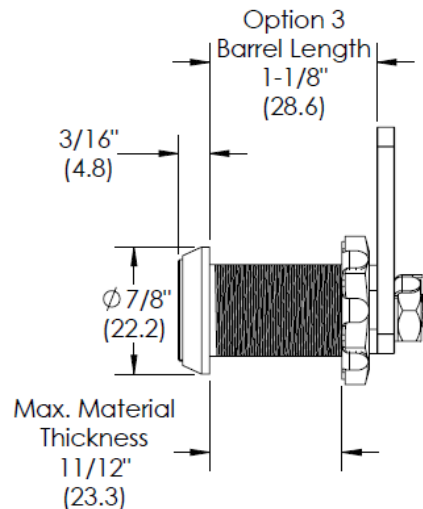
- PN** – Polished Nickel
- SC** – Satin Chrome (US26D)
- CF** – Custom Finish (See Finish Page)

CAM **C**

See CAM Page for options



NOTE: If installing into a round hole use a Double-D mounting plate to keep the lock from spinning!



NOTE: When selecting a CAM the threaded tail on this lock has a horizontal Tenon. Using "H" designation CAM's will allow for the locked at 12 o'clock orientation shown.

Package includes parts for 90° and 180° rotation.

All dimensions are nominal. For best fit call for a sample.
Dual-Dimensions in parentheses are in millimeter (mm).

Part Number

K -CL- **BL** - **R** - **P** -

KO - **M** - **F** - **C**

KEYWAY **K**

- 01** – Medeco® m³
- 02** – Medeco® CA
- 06** – BOA Restricted

BARREL LENGTH **BL**

- 2** – 7/8" (22.2mm)
- 3** – 1-1/8" (28.6mm)
- 4** – 2" (50.8 mm)

ROTATION **R**

- 90** – 90° Right
- 180** – 180° Right
(Call for info on Left-hand rotation)

KEY PULLS **P**

- C** – Captive Key Retaining
(90° Rotation Only)
- N** – Non-Captive 2 Key Pulls
(180° Rotation Only)

KEYED OPTION **KO**

- A** – Keyed Alike
- D** – Keyed Different

MASTER **M**

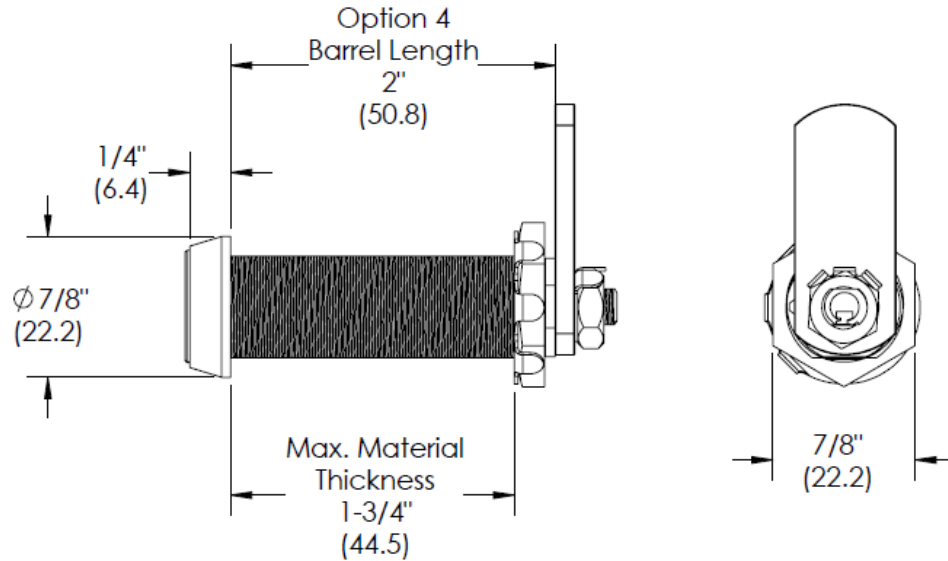
- N** – Non-Master
- M** – Single Level Master

FINISH **F**

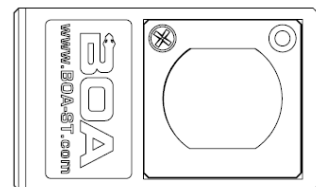
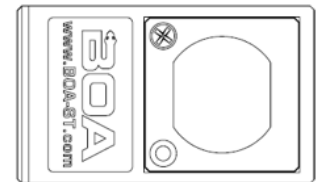
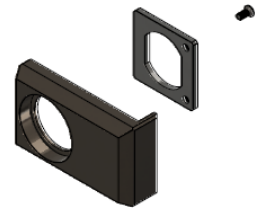
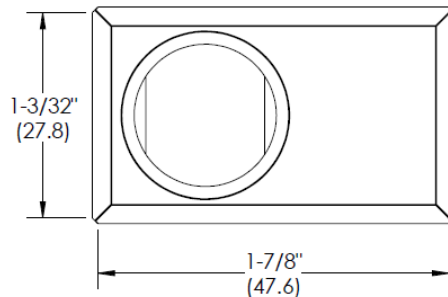
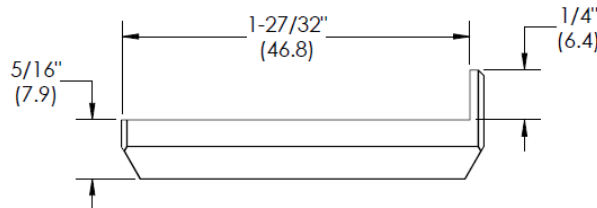
- PN** – Polished Nickel
- SC** – Satin Chrome (US26D)
- CF** – Custom Finish (See Finish Page)

CAM **C**

See CAM Page for options



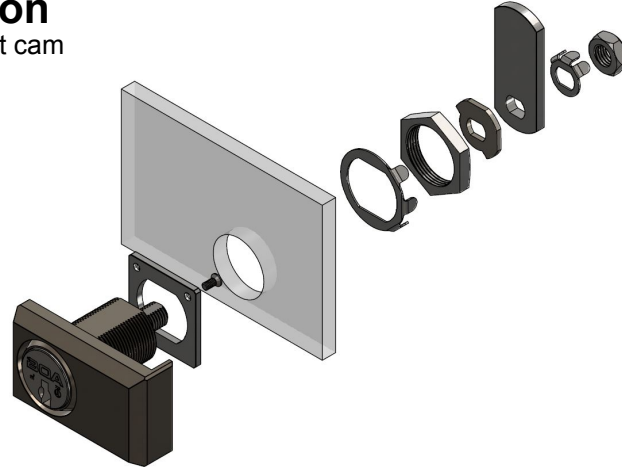
NOTE: For glass installation with a round hole the bracket shown below must be used to eliminate rotation of the lock assembly.



All dimensions are nominal. For best fit call for a sample.
Dual-Dimensions in parentheses are in millimeter (mm).

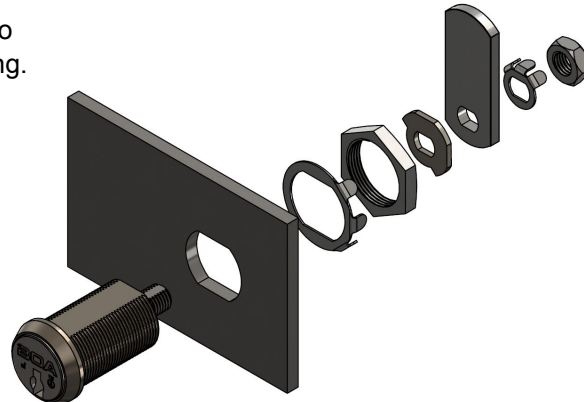
Glass Installation

-Use L-bracket to prevent cam lock from spinning.



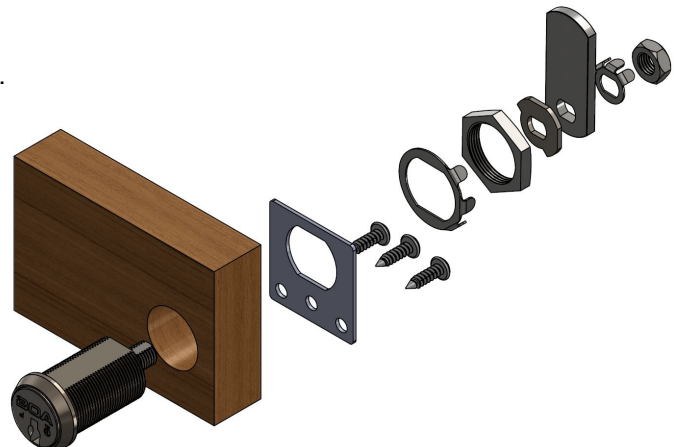
Metal Installation

-Cut double D hole on metal to prevent cam lock from spinning.



Wood Installation

-Use mounting plate to prevent cam lock from spinning.



All dimensions are nominal. For best fit call for a sample.
Dual-Dimensions in parentheses are in millimeter (mm).

Part Number

K -CL- **BL** - **R** - **P** -
KO - **M** - **F** - **MI** - **C**

KEYWAY **K**

- 01** – Medeco® m³
- 02** – Medeco® CA
- 06** – BOA Restricted

BARREL LENGTH **BL**

- S** – 7/8" (22.2mm)
- L** – 1-3/8" (36.5mm)

ROTATION **R**

- 90** – 90° Right
- 180** – 180° Right
(Call for info on left-hand rotation)

KEY PULLS **P**

- C** – Captive Key Retaining
(90° Rotation Only)
- N** – Non-Captive 2 Key Pulls
(180° Rotation Only)

KEYED OPTION **KO**

- A** – Keyed Alike
- D** – Keyed Different

MASTER **M**

- N** – Non-Master
- M** – Single Level Master

FINISH **F**

- PN** – Polished Nickel
- SC** – Satin Chrome (US26D)
- CF** – Custom Finish (See Finish Page)

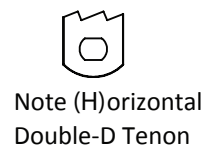
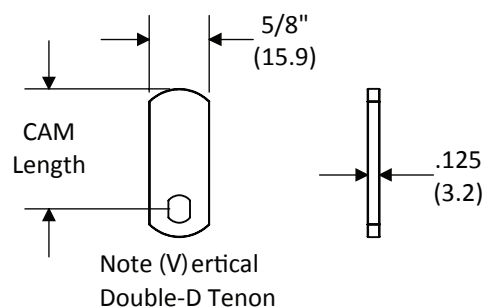
MATERIAL INSTALLATION **MI**

- GL** – Glass
- MT** – Metal
- WD** – Wood

CAM **C**

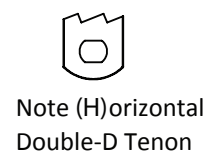
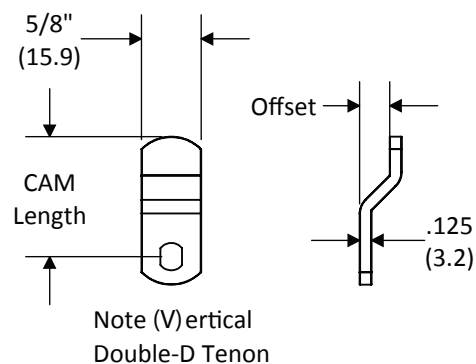
See CAM Page for options

Straight Flat CAM	
Part #	CAM Length
00-CAM-0750	0.750" (19.1 mm)
00-CAM-1250	1.250" (31.8 mm)
00-CAM-1750	1.750" (44.5mm)
00-CAM-2000	2.000" (50.8 mm)



Offset CAM		
Part #	CAM Length	Offset
00-CAM-1250X0313	1.250" (31.8 mm)	0.3125" (7.9 mm)
00-CAM-2000X0313	2.000" (50.8 mm)	0.3125" (7.9 mm)

Note: All CAMs are sold as a set or 2 CAMs containing both Vertical and Horizontal Tenons.



**Custom sizes available.
Call for quote and details.**

All dimensions are nominal. For best fit call for a sample.
Dual-Dimensions in parentheses are in millimeter (mm).

Medeco Dead Bolt Drawer Lock

Part Number

K - DB - **BL** - **B** - **P** -
KO - **M** - **F**

KEYWAY **K**

- 01** – Medeco® m³
- 02** – Medeco® CA
- 06** – BOA Restricted

BARREL LENGTH **BL**

- S** – 7/8" (22.2mm)
- L** – 1-3/8" (34.9mm)

BOLT TYPE **B**

- BS** – 1-1/16" (27.0 mm)
- BL** – 1-11/16" (42.9 mm)
- BXL** – 3-1/8" (79.4 mm)
- OS** – 3/8" (9.5 mm) Offset Bolt

KEY PULLS **P**

- C** – Captive Key Retaining (90° Rotation Only)
- N** – Non-Captive 2 Key Pulls (180° Rotation Only)

KEYED OPTION **KO**

- A** – Keyed Alike
- D** – Keyed Different

MASTER **M**

- N** – Non-Master
- M** – Single Level Master

FINISH **F**

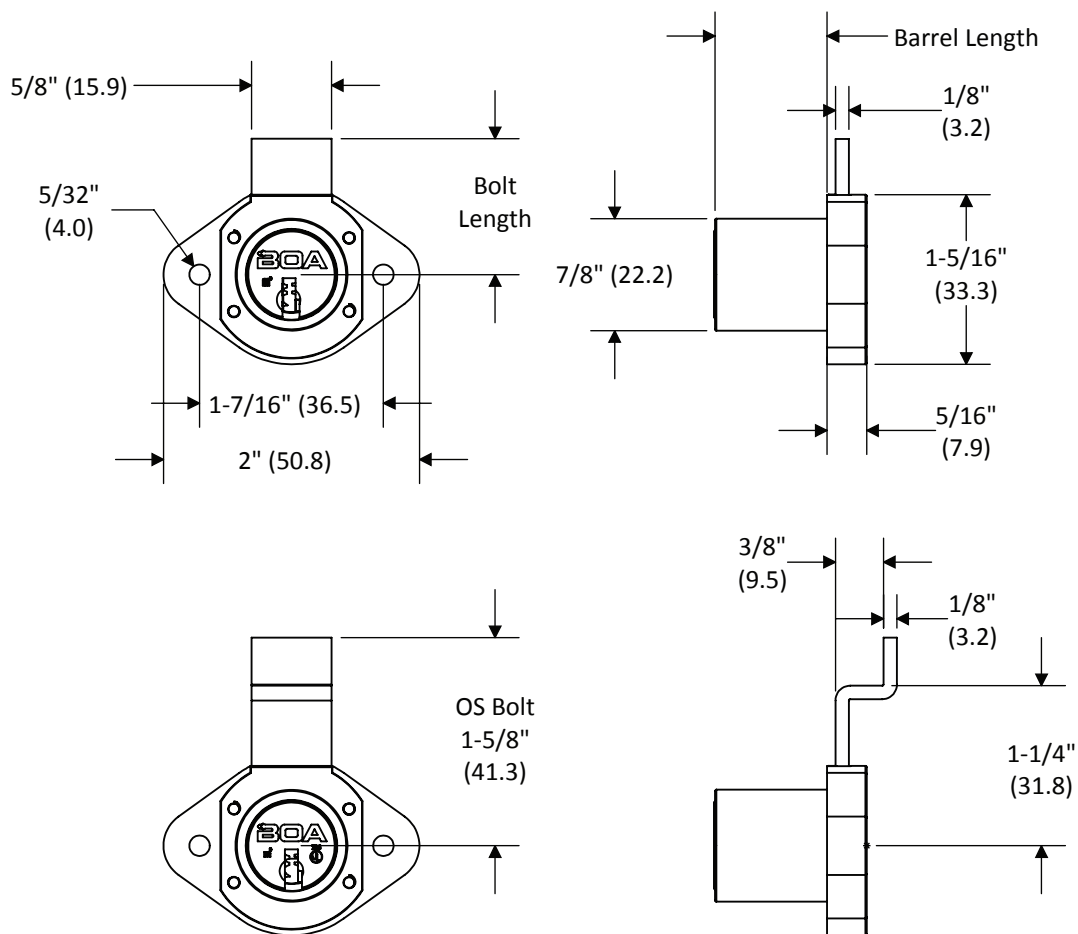
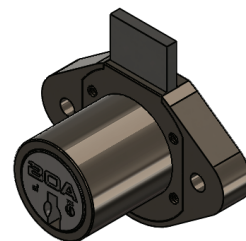
- PN** - Polished Nickel
- SC** - Satin Chrome (US26D)
- CF** - Custom Finish (See Finish Page)

NOTE:

Products pictured in the locked position

Nominal Bolt travel is 7/16" (11.1 mm)

Short bolt (BS) option retracts completely into housing.



All dimensions are nominal. For best fit call for a sample.
Dual-Dimensions in parentheses are in millimeter (mm).

Medeco Dead Bolt "BULLDOG" Drawer Lock*

*Patent Pending

Part Number

K -BD- **BL** - **B** - **P** -
KO - **M** - **F**

KEYWAY **K**

- 01** – Medeco® m³
- 02** – Medeco® CA
- 06** – BOA Restricted

BARREL LENGTH **BL**

- S** – 7/8" (22.2mm)
- L** – 1-3/8" (34.9mm)

BOLT TYPE **B**

- BS** – 1-1/16" (27.0 mm)
- BL** – 1-11/16" (42.9 mm)
- BSB** – 1-1/16" (27.0 mm)
with Rubber Bumper
- BLB** – 1-11/16" (42.9 mm)
with Rubber Bumper

KEY PULLS **P**

- C** – Captive Key Retaining
(90° Rotation Only)
- N** – Non-Captive 2 Key Pulls
(180° Rotation Only)

KEYED OPTION **KO**

- A** – Keyed Alike
- D** – Keyed Different

MASTER **M**

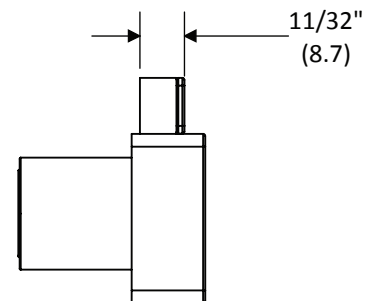
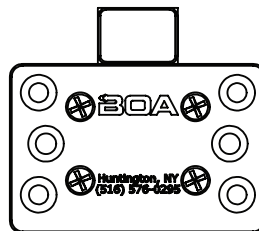
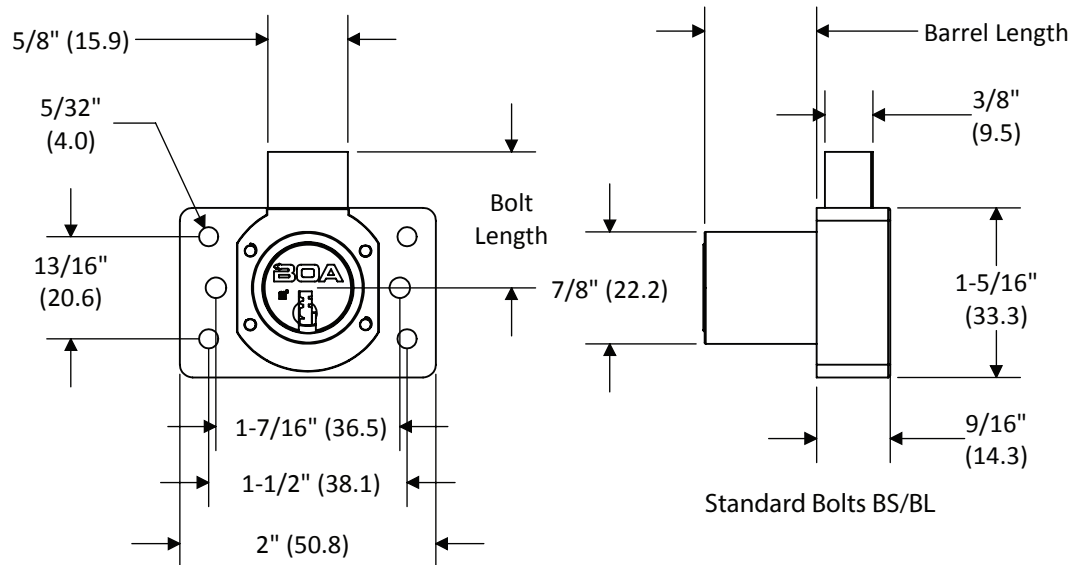
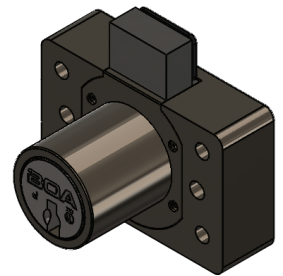
- N** – Non-Master
- M** – Single Level Master

FINISH **F**

- PN** - Polished Nickel
- SC** - Satin Chrome (US26D)
- CF** - Custom Finish (See Finish Page)

NOTE:

Products pictured in the locked position
Nominal Bolt travel is 7/16" (11.1 mm)
Short bolt (BS & BSB) options retract
completely into housing.



Rubber Bumper Bolts BSB/BLB

All dimensions are nominal. For best fit call for a sample.
Dual-Dimensions in parentheses are in millimeter (mm).

Medeco Snap Bolt Drawer Lock

Part Number

K -SB- **BL** - **O** -N-
KO - **M** - **F**

KEYWAY **K**

- 01** – Medeco® m³
- 02** – Medeco® CA
- 06** – BOA Restricted

BARREL LENGTH **BL**

- S** - 7/8" (22.2mm)
- L** - 1-3/8" (34.9mm)

ORIENTATION **O**

- VI** - Vertical or Inverted
- LR** - Left or Right

KEYED OPTION **KO**

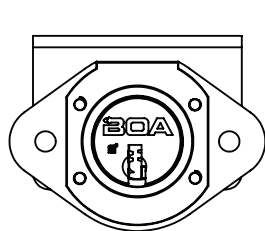
- A** – Keyed Alike
- D** – Keyed Different

MASTER **M**

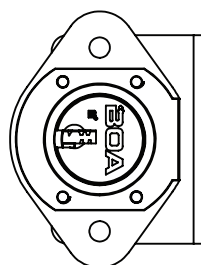
- N** – Non-Master
- M** – Single Level Master

FINISH **F**

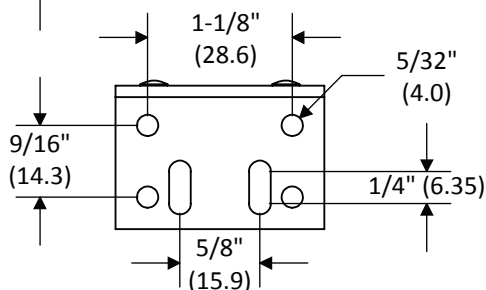
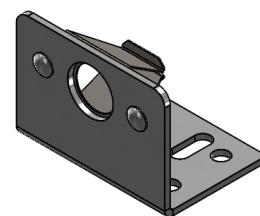
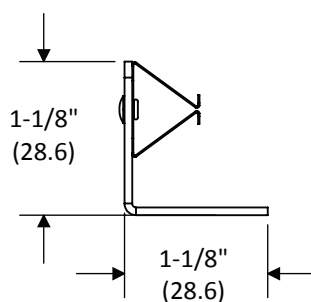
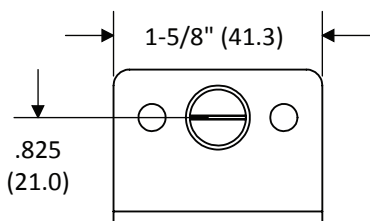
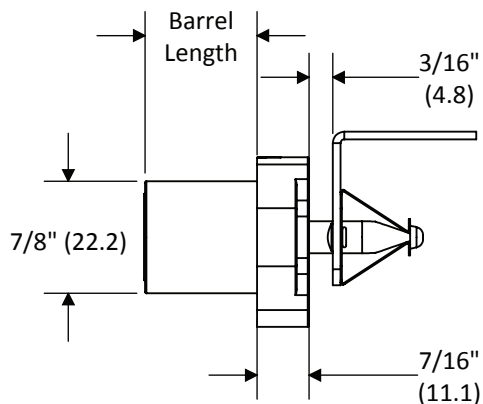
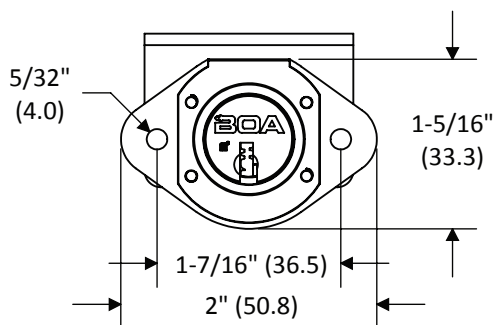
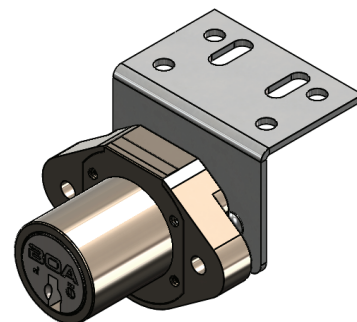
- PN** - Polished Nickel
- SC** - Satin Chrome (US26D)
- CF** - Custom Finish (See Finish Page)



"VI" Orientation



"LR" Orientation



All dimensions are nominal. For best fit call for a sample.
Dual-Dimensions in parentheses are in millimeter (mm).

Medeco Plunger Lock

Part Number

K -PL-S-0590-N- **F**

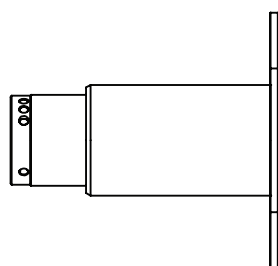
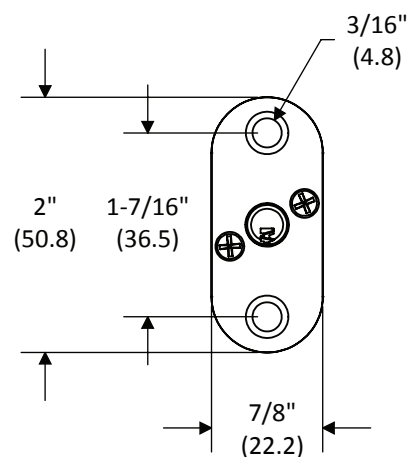
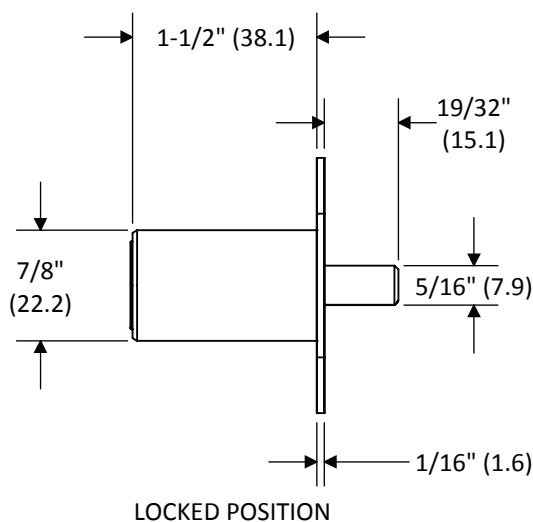
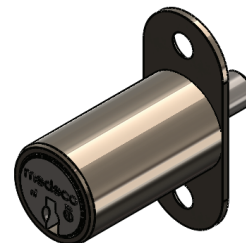
KEYWAY **K**

- 01** – Medeco® m³
- 02** – Medeco® CA
- 06** – BOA Restricted

FINISH **F**

- BC** - Brushed Chrome Standard
- CF** - Custom Finish (See Finish Page)

NOTE:
Plunger bolt retracts completely into housing when open.



UNLOCKED POSITION



LOCKED POSITION



UNLOCKED POSITION

All dimensions are nominal. For best fit call for a sample.
Dual-Dimensions in parentheses are in millimeter (mm).

Part Number

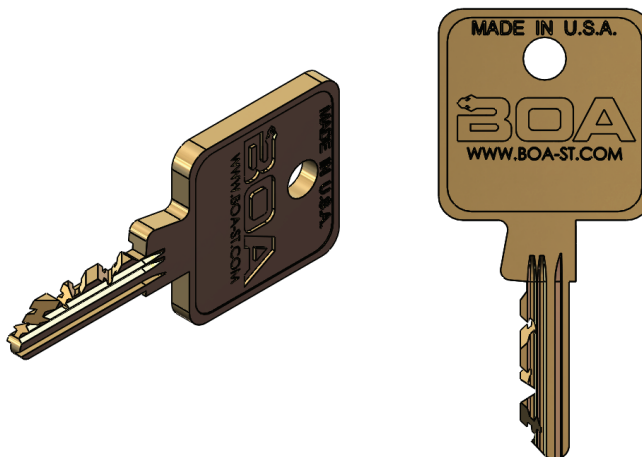
K -KEY- **FN**

KEYWAY **K**

- 01** – Medeco® m³
- 02** – Medeco® CA
- 06** – BOA Restricted

FUNCTION **FN**

- OP** – Operating
- M** – Single Level Master



BOA Security Technologies offers Medeco® Biaxial and Medeco3® key technology. Restricted keyways are available which offer another layer of protection.

All Medeco® keys purchased through BOA must be registered with an authorized identification and signature on file. Additional keys can only be purchased with this authorization credential.

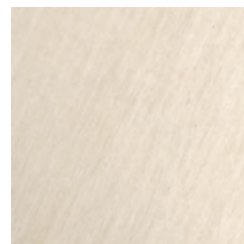
Finishes



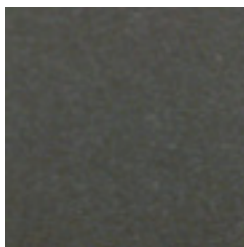
PN - Polished Nickel



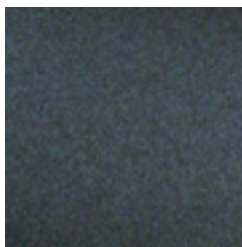
PC - Polished Chrome



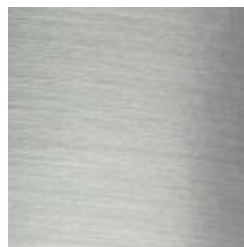
SC - Satin Chrome (US26D)



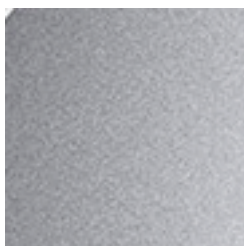
GM - Gunmetal



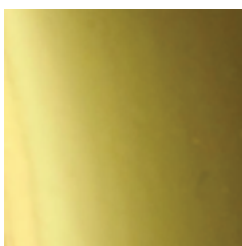
BL - Black



BC - Brushed Chrome



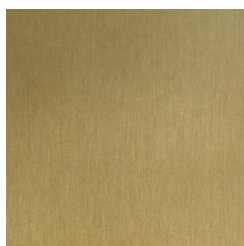
SBC - Sandblasted Chrome



PB - Polished Brass



SB - Satin Brass



SB - Statuary Bronze



CF - Custom Finish

Nexgen XT is a pure electronic master key system providing Controlled Access, Accountability, Physical Security and effective System Management. Nexgen XT offers the benefits of electronic access control in a key operated lock. Keys are programmed to operate designated locks during a set schedule. Nexgen XT locks and keys record every access and attempted access for full visibility to who, where, and when.

Features:

- **Controlled Access**

Keys are electronically programmed to open only specific locks during a designated schedule. Schedules may also contain an expiration point to completely disable the key until it is audited and reprogrammed.

- **Accountability**

Audit information recorded in both the lock and key shows a time-and-date-stamped record of every event, including authorized accesses and unauthorized attempts.

- **Electronic Rekeying & Scheduling**

Respond quickly to security threats, lost or stolen keys, or personnel changes without the added cost of changing your locks and keys.

- **Easy Installation**

Nexgen XT keys provide all power to the cylinder, eliminating the need for any hard wiring or power supply. Simply remove the existing mechanical cylinder and install the Nexgen XT lock.

- **Physical Security**

Nexgen XT products add a wide variety of intelligent features without compromising on physical security. Attack-resistant design and tamper-proof features provide strong protection against forced entry.

- **Efficient System Management**

Nexgen XT software contains tools that will help you manage your security more efficiently. Flexible programming, scheduled access and full audit reports are offered with the convenience of stand-alone or web-based software.

- **Added Value**

More than just a way to protect your property, equipment and assets, Nexgen XT is also a business tool that can lead to a substantial return on investment.

- **Multiple Finishes Available**

A variety of finishes from polished nickel to gloss black are available. Call for details, lead time, and pricing.

Mechanical Specifications:

- Stainless steel shell and front disc
- Gold plated data contacts
- Key retaining (single key pull)
- Drill and tamper resistant
- Indoor and outdoor use

Electronic Specifications:

- Lock holds up to 2000 audit events
- No hard wiring required, all power provided by key
- Encrypted data communication
- All access programming performed through the key
- Lock can hold black-list of unauthorized keys

Nexgen XT Cam Lock

Part Number

05-CL- **BL** - **R** -C- **F** - **C**

BARREL LENGTH **BL**

2 – 7/8" (22.2mm)

3 – 1-1/8" (28.6mm)

ROTATION **R**

90 – 90° Right

180 – 180° Right

(Call for info on Left-hand rotation)

FINISH **F**

SS – Satin Stainless (Standard)

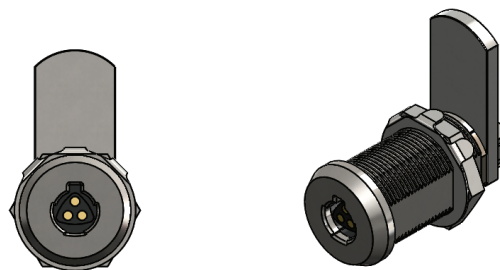
PN – Polished Nickel

SC – Satin Chrome (US26D)

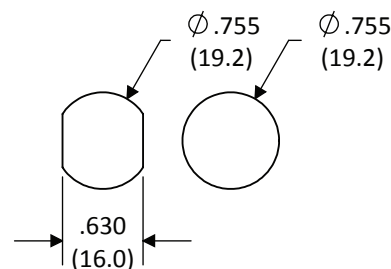
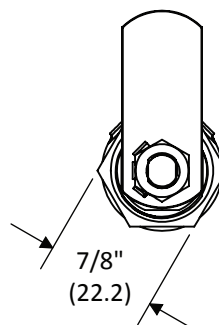
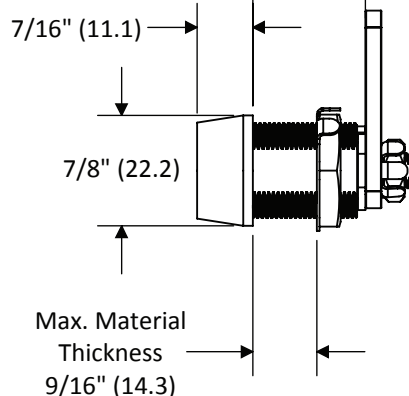
CF – Custom Finish (See Finish Page)

CAM **C**

See CAM Page for options

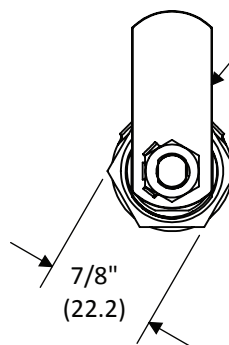
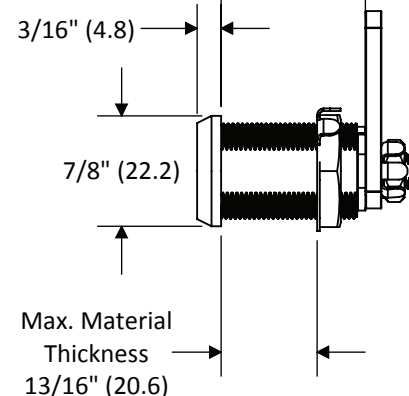


Option 2
Barrel Length
7/8" (22.2)



NOTE: If installing into a round hole use a Double-D mounting plate to keep the lock from spinning!

Option 3
Barrel Length
1-1/8" (28.6)

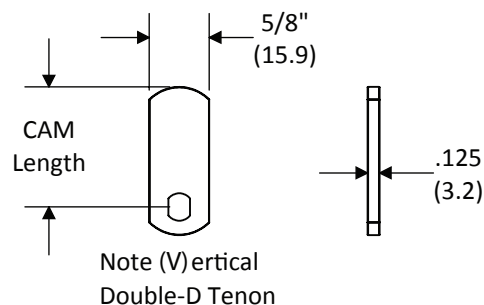


Note when selecting a CAM the threaded tail on this lock has a vertical tenon. Using "V" designation CAM's will allow for the locked at 12 o'clock orientation shown.

Package includes parts for 90° and 180° rotation.

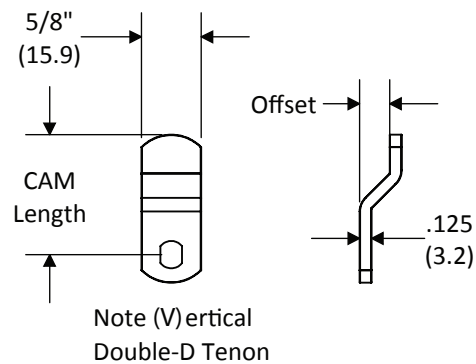
All dimensions are nominal. For best fit call for a sample.
Dual-Dimensions in parentheses are in millimeter (mm).

Straight Flat CAM	
Part #	CAM Length
00-CAM-0750	0.750" (19.1 mm)
00-CAM-1250	1.250" (31.8 mm)
00-CAM-1750	1.750" (44.5mm)
00-CAM-2000	2.000" (50.8 mm)



Offset CAM		
Part #	CAM Length	Offset
00-CAM-1250X0313	1.250" (31.8 mm)	0.3125" (7.9 mm)
00-CAM-2000X0313	2.000" (50.8 mm)	0.3125" (7.9 mm)

Note: All CAMs are sold as a set or 2 CAMs containing both Vertical and Horizontal Tenons.



**Custom sizes available.
Call for quote and details.**

All dimensions are nominal. For best fit call for a sample.
Dual-Dimensions in parentheses are in millimeter (mm).

Part Number

05-DB-L-**B**-C-**F**

BOLT TYPE **B**

BS – 1-1/16" (27.0 mm)

BL – 1-11/16" (42.9 mm)

BXL – 3-1/8" (79.4 mm)

OS – 3/8" (9.5 mm) Offset Bolt

FINISH **F**

PN – Polished Nickel (with Satin Stainless Core)

SC – Satin Chrome (US26D)

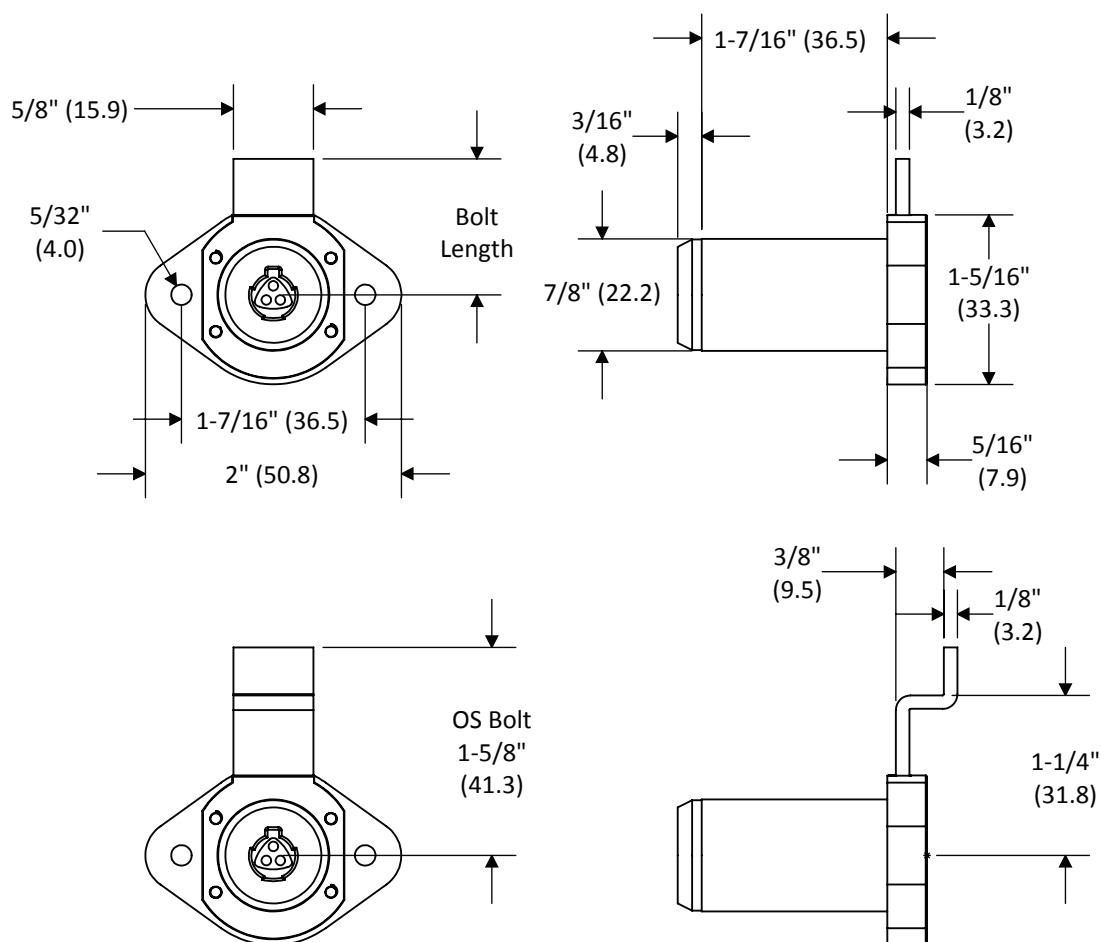
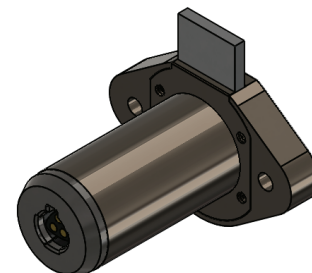
CF – Custom Finish (See Finish Page)

NOTE:

Products pictured in the locked position

Nominal Bolt travel is 7/16" (11.1 mm)

Short bolt (BS) option retracts completely into housing.



All dimensions are nominal. For best fit call for a sample.
Dual-Dimensions in parentheses are in millimeter (mm).

Nexgen XT Dead Bolt "BULLDOG" Drawer Lock*

*Patent Pending

Part Number

05-BD-L-**B**-C-**F**

BOLT TYPE **B**

BS – 1-1/16" (27.0 mm)

BL – 1-11/16" (42.9 mm)

BSB – 1-1/16" (27.0 mm)
with Rubber Bumper

BLB – 1-11/16" (42.9 mm)
with Rubber Bumper

FINISH **F**

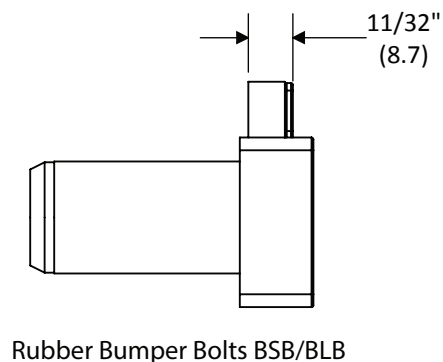
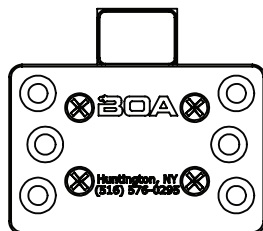
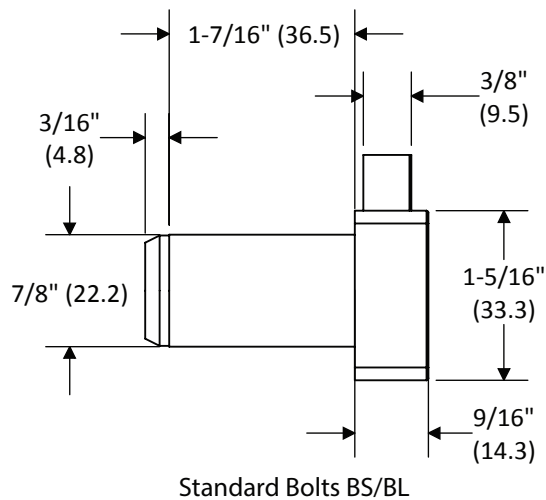
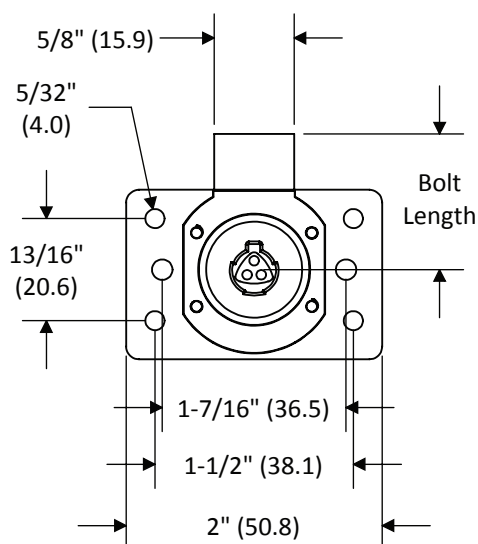
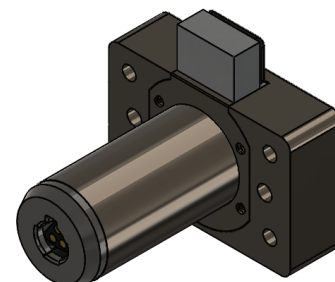
PN – Polished Nickel (with Satin
Stainless Core)

SC – Satin Chrome (US26D)

CF – Custom Finish (See Finish
Page)

NOTE:

Products pictured in the locked position
Nominal Bolt travel is 7/16" (11.1 mm)
Short bolt (BS & BSB) options retract
completely into housing.



All dimensions are nominal. For best fit call for a sample.
Dual-Dimensions in parentheses are in millimeter (mm).

Part Number

05-SB-L-**O**-N-**F**

ORIENTATION **O**

VI - Vertical or Inverted

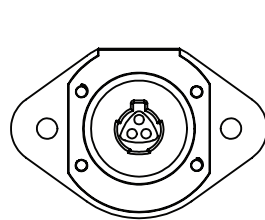
LR - Left or Right

FINISH **F**

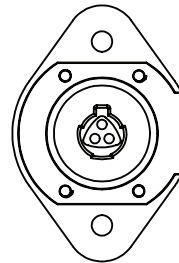
PN - Polished Nickel (with Satin Stainless Core)

SC - Satin Chrome (US26D)

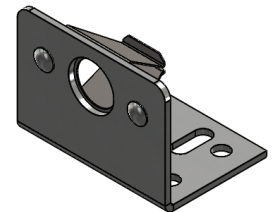
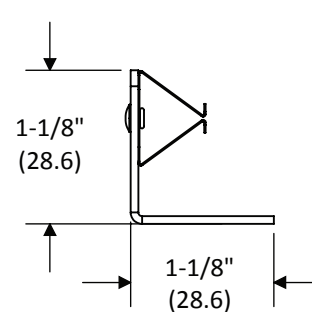
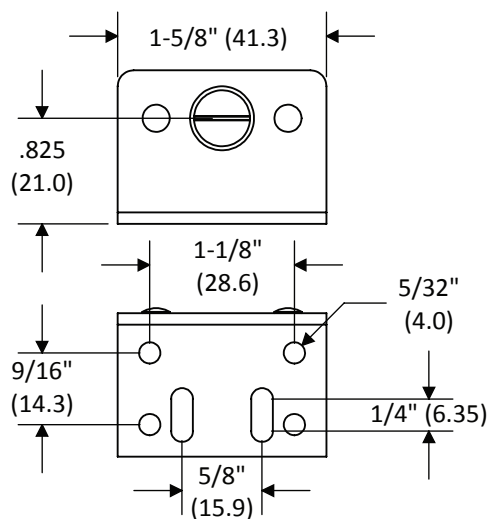
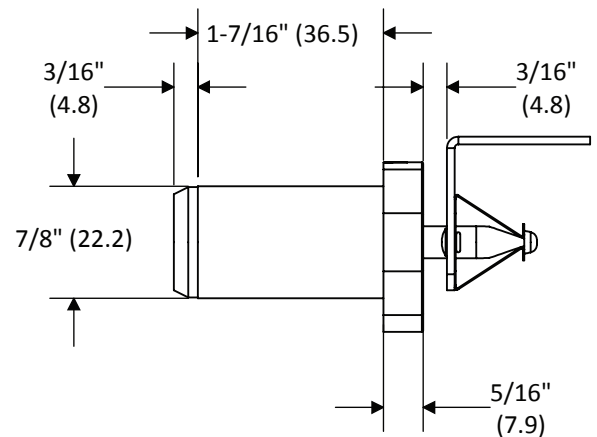
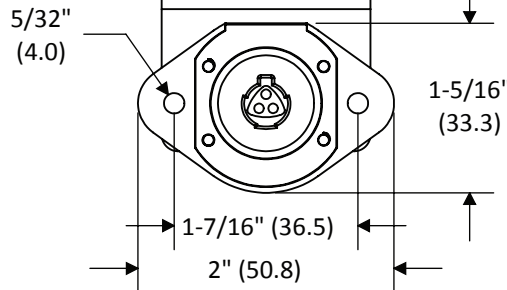
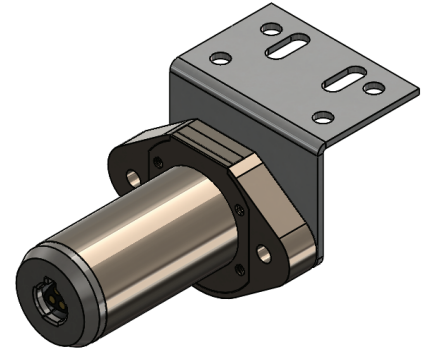
CF - Custom Finish (See Finish Page)



"VI" Orientation



"LR" Orientation

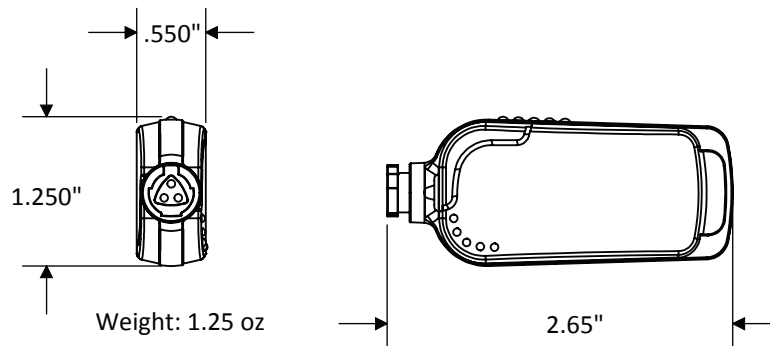


All dimensions are nominal. For best fit call for a sample.
Dual-Dimensions in parentheses are in millimeter (mm).

Part Number

SLIMLINE

05-KEY-OP-SLIM – Operating



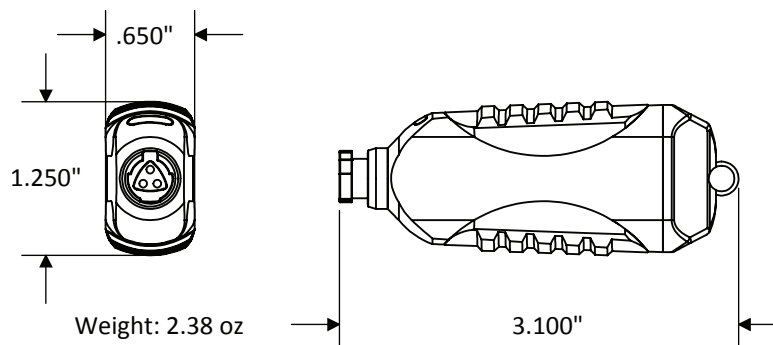
STANDARD

05-KEY-OP – Operating

05-KEY-CTL – Control

05-KEY-AUDIT – Audit

05-KEY-BLIST – Blacklist



All dimensions are nominal. For best fit call for a sample.
Dual-Dimensions in parentheses are in millimeter (mm).

Nexgen XT Accesories

Part #	Description
05-CHG	Portable Key Charging Adapter only (order cable separately).
05-CHG-SET	Portable Key Charging Adapter (includes 05-USB cable 05-TRN).
05-DOCK-SET	USB System Dongle (includes 05-USB cable).
05-MOBILE-DOCK	Mobile Programmer allows XT Industrial and Slim Line keys to be programmed remotely via Bluetooth (on an Android device) or via a USB tether to a laptop.
05-REMOTE-DOCK	Remote Wall Programmer - Program and update Nexgen XT Keys remotely via an internet connection to the Medeco XT Web Manager.
05-MCHG	Multi Key Charger - Charge up to 10 Nexgen XT keys simultaneously (does not program keys). Includes transformer.
05-TRN	Wall Power Adapter for use with 05-CHG.
05-TRN-V	Vehicle Power Adapter for use with 05-CHG.
05-USB	USB Cable.
05-SOFTWARE-WH	Nexgen XT Web Hosted Software (call for details).
05-SYS-DONGLE-SA	USB Nexgen XT System Dongle (for stand alone systems only).
05-SOFTWARE-SA	Nexgen XT Stand Alone Software (call for details).



NINJA Electronic Lock Programming Instructions

Determine desired application – see figures 1-4

DRAWER APPLICATION

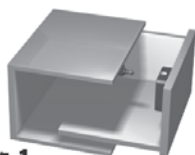


Fig. 1
Front Face Mount
Installs using
Standard Locking
Pin.



Fig. 2
Back of Drawer
Installs using Locking
Pin with Alarm
function. Requires
external reader

SLIDING & SWING DOOR APPLICATION



Fig. 3
Sliding Glass
Installs using
Locking Pin with
Alarm function and
Glass Mounting Kit



Fig. 4
Pivoting Door Mount
Installs using
Standard Locking Pin

NOTE: Program lock before installation so you can verify read range through the door!

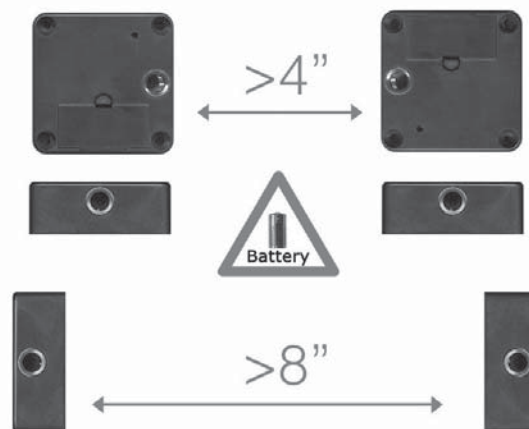
PROGRAMMING INSTRUCTIONS

Initializing the Ninja lock(s) to the Programming Card

1. Press the push-button on the back of the Ninja Lock.
2. The lock will make a ticking sound (signal). Place the programming card in contact with the lock within 3 seconds of hearing this signal.
3. Two short rising tone signals confirm that the programming card has been initialized.
4. If you are setting up multiple Ninja Locks and would like to utilize one programming card repeat the above steps for all other Ninja Locks in the same system with the same programming card.

Note: Multiple locks must be separated by these minimum distances for optimum operation and battery life.

Note orientation.



NINJA Electronic Lock Programming Instructions

INSTALLATION

Add a User Card or Keyfob

1. Place the programming card in contact with the lock or the reader head
2. The lock will make a ticking sound (signal). Place the user card or keyfob in contact with the lock within 3 seconds of hearing this signal or reader head
3. Two short rising tone signals confirm that the reading in was successful.
4. The lock can now be opened with card or keyfob.
5. For additional user cards or keyfobs repeat the above steps for each one.

Delete a User Card or Keyfob

1. Place the programming card in contact with the lock.
2. The lock will make a ticking sound (signal). Place the user card or keyfob in contact with the lock within 3 seconds of hearing this signal.
3. Two short rising tone signals confirm that the enrollment cancellation was successful.
4. Repeat the above steps for all other user cards or keyfobs that you wish to delete from the lock.

To Delete All Keys at Once

1. Place the programming card for more than 10 seconds in contact with the lock.
2. You will hear multiple beeps during this time.
3. When all users have been erased you will hear one long beep followed by a ticking sound ready to be programmed again.
4. Repeat steps from above for programming in user cards and keyfobs.

Installing the Lock Body

Carefully drill the first mounting hole with a 7/64" (2.77mm) drill bit (see diagram below). The front face of the lock must be parallel to the door/drawer so that the pin can be fully inserted. Drill the other three mounting holes using the lock case as a guide.

Do not overtighten the screws!

Installing the Pin

Note: Program Lock before installing the pin!

IMPORTANT

The pin must have some free play after insertion into the lock or the mechanism may not completely cycle open or close. There should be $\pm 1/8"$ (3mm) of free play on the door/drawer.

For ALARM PIN:

1. Apply double sided tape (not included) to the back of the pin strike. Insert pin strike into the lock case.
2. Close the door/drawer and press firmly. Present prox card or keyfob to reader and open the door/drawer. If pin does not release, check lock position and that user card or keyfob has been programmed.
3. Secure with screws.

For Standard and Spring Loaded Pin
Please use diagram measurements to secure.

